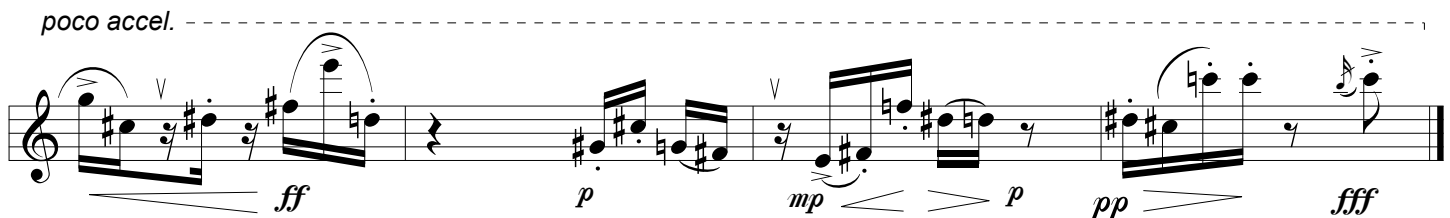
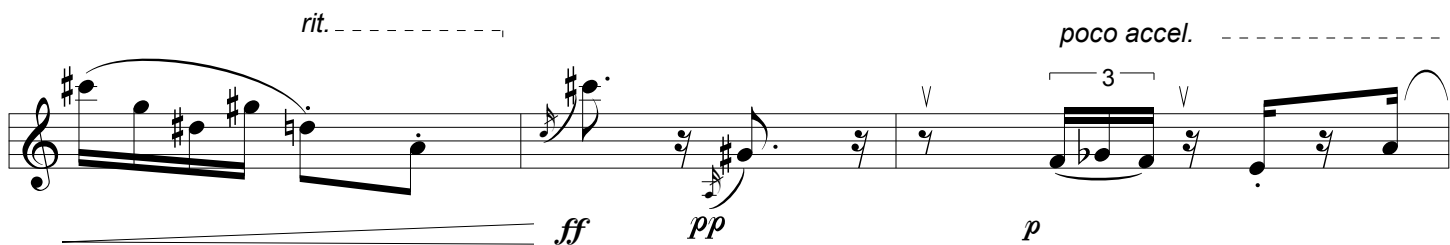
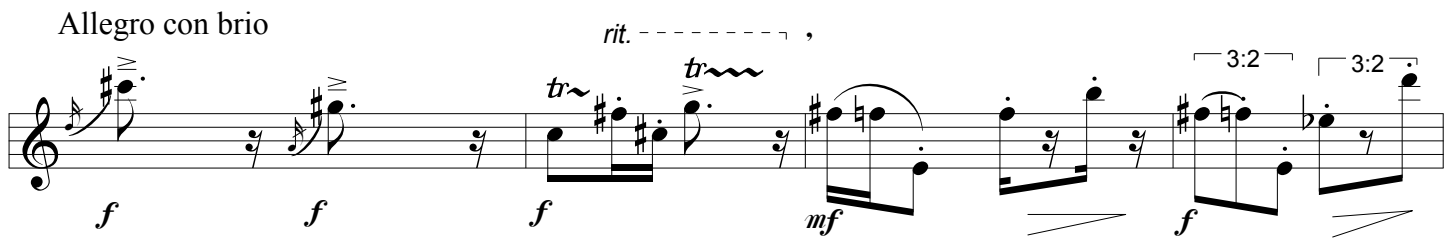


1. "Indecisive"

Leo Zhurbin
(1996)



©1996 by Leo Zhurbin

Performance Notes

1) A Bb - clarinet should be used.

2) In the SLOWER sections, the rhythmic values are more relative, and do not need to be followed precisely, only according to their approximate relationship to the values around it. In the FASTER sections, however, rhythmic precision is vital.

3) The "V" (up-bow for string instruments) marking on top of rests means something like an audible breath. That is to say, that you can actually hear the breath. This shouldn't be terribly deliberate, but it should be heard. This "invention" is there to keep a better feeling of the piece's pulse and some sort of rhythmic polyphony. (This is also to make some notes seem like they are on offbeats, when there is no strong beat preceding, which is reminiscent of swing, etc.)