

Sonata for Two Violas (Falck60), (tenor / bass version)

Wilhelm Friedemann Bach (1710-1784)

Allegro di molto

tr

Tenor Recorder

Bass Recorder

4

7

10

13

15

18

tr

22

System 1, measures 22-25. The music is in 2/4 time with a key signature of one flat (B-flat). The melody in the treble clef consists of eighth and quarter notes, with some ties. The bass line features a mix of eighth and quarter notes, often beamed together. Measure 25 ends with a sharp sign on the treble staff.

26

System 2, measures 26-28. Measures 26 and 27 feature sixteenth-note runs in both staves. Measure 28 has a more melodic treble line and a bass line with eighth notes.

29

System 3, measures 29-32. Measures 29 and 30 have a steady eighth-note bass line. Measures 31 and 32 feature a melodic treble line with a trill (tr) on the final note. The bass line continues with eighth notes.

33

System 4, measures 33-35. Measures 33 and 34 contain sixteenth-note runs in both staves. Measure 35 has a melodic treble line and a bass line with eighth notes.

36

System 5, measures 36-38. Measures 36 and 37 feature continuous sixteenth-note runs in both staves. Measure 38 has a melodic treble line and a bass line with eighth notes.

39

System 6, measures 39-41. Measures 39 and 40 feature melodic treble lines with trills (tr) on the first and second notes respectively. The bass line consists of eighth notes. Measure 41 has a melodic treble line and a bass line with eighth notes.

42

System 7, measures 42-44. Measures 42 and 43 feature melodic treble lines with trills (tr) on the first and second notes respectively. The bass line consists of eighth notes. Measure 44 has a melodic treble line and a bass line with eighth notes.

45

Measures 45 and 46 of a musical score. Measure 45 features a treble staff with eighth and sixteenth notes and a bass staff with eighth notes. Measure 46 continues the melody in the treble staff and has a more active bass line with eighth notes.

47

Measures 47 and 48. Measure 47 has a treble staff with eighth notes and a bass staff with quarter notes. Measure 48 features a trill (tr) in the treble staff and a bass line with eighth notes. Both measures end with a repeat sign and a 3/4 time signature.

2 - Scherzo

1

Measures 1 through 7 of the 'Scherzo' section. The music is in 3/4 time. Measures 1-4 are in the key of B-flat major, and measures 5-7 are in the key of D-flat major. The notation includes various note values and rests.

8

Measures 8 through 11. Measures 8-9 are in the key of B-flat major, and measures 10-11 are in the key of D-flat major. The notation includes various note values and rests.

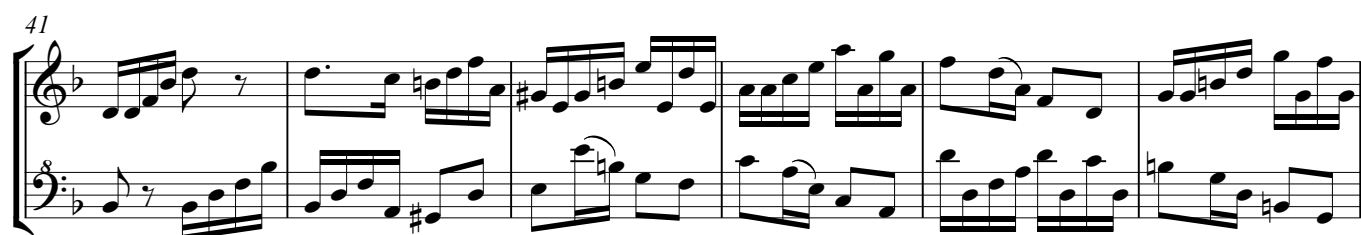
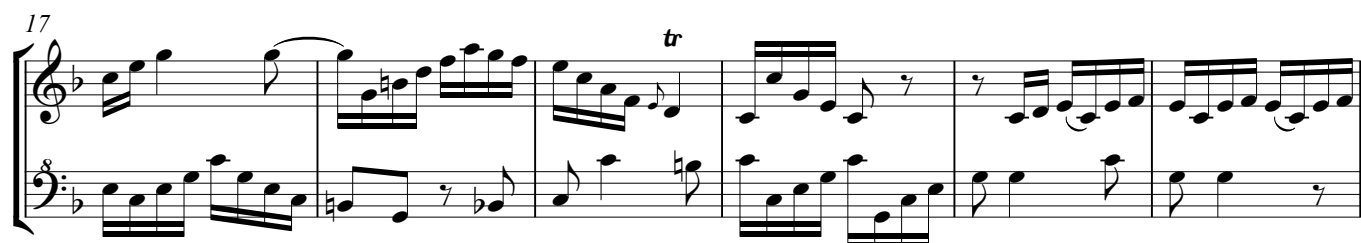
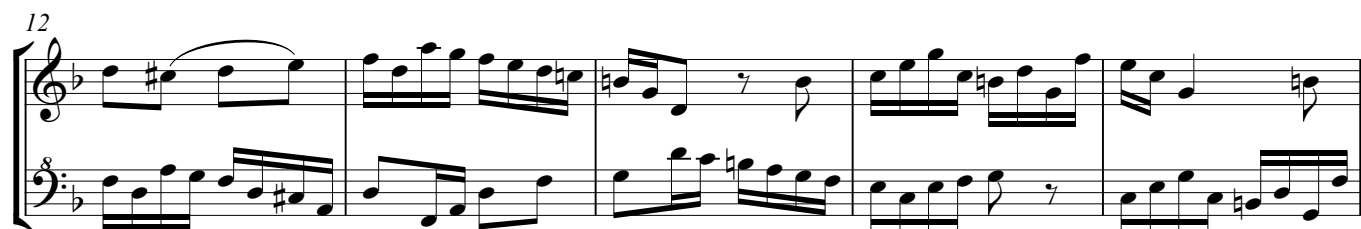
12

Measures 12 through 16. Measures 12-13 are in the key of B-flat major, and measures 14-16 are in the key of D-flat major. The notation includes various note values and rests.

3 - Vivace

17 Vivace 1

Measures 17 through 22 of the 'Vivace' section. The music is in 2/4 time. Measures 17-18 are in the key of B-flat major, and measures 19-22 are in the key of D-flat major. The notation includes various note values and rests.



47

Measures 47-51 of a musical score. The system consists of a treble and bass staff. The key signature has one flat (B-flat). Measures 47-51 contain complex rhythmic patterns with many beamed sixteenth and thirty-second notes. Measure 51 ends with a whole note in the treble and a half note in the bass.

52

Measures 52-57 of a musical score. The system consists of a treble and bass staff. Measures 52-57 continue the complex rhythmic patterns. Measure 57 ends with a half note in the treble and a half note in the bass.

58

Measures 58-61 of a musical score. The system consists of a treble and bass staff. Measures 58-61 continue the complex rhythmic patterns. Measure 61 ends with a half note in the treble and a half note in the bass.

62

Measures 62-66 of a musical score. The system consists of a treble and bass staff. Measures 62-66 continue the complex rhythmic patterns. Measure 66 ends with a half note in the treble and a half note in the bass. A trill (tr) is marked above the final note of the treble staff in measure 65.