

Sonata in A Minor for 'Cello & Continuo, (RV 44)

Violin

Antonio Vivaldi (1678-1741)

Largo

3

tr *tr* *tr*

7

10 *tr* *tr* *tr*

14 *tr* *tr* *tr*

17 *tr* *tr*

20

22 *tr*

1

3

5

8

11

14

16

18

21

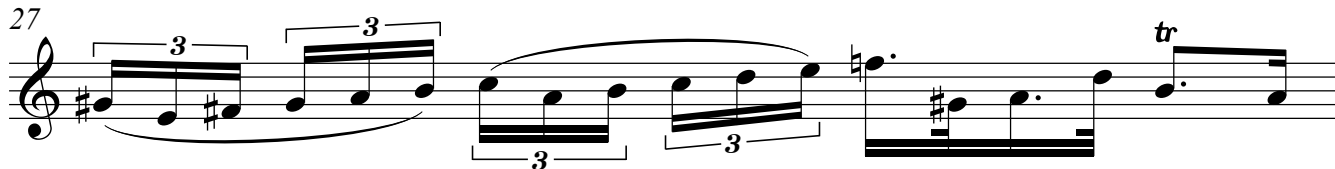
23

Violin

Violin

3

25



27



28



l

Largo



9



17



24



30



4

l

3

6

9

[illegible]

12

12



15

15



18

18 

21

21

24

[illegible]

27

27



Measure 27: Treble clef, key signature of one sharp (F#). The measure contains a complex rhythmic pattern with eighth and sixteenth notes, including slurs and accents.

30



33



36



39

