

Concerto Op.4 No.1

I

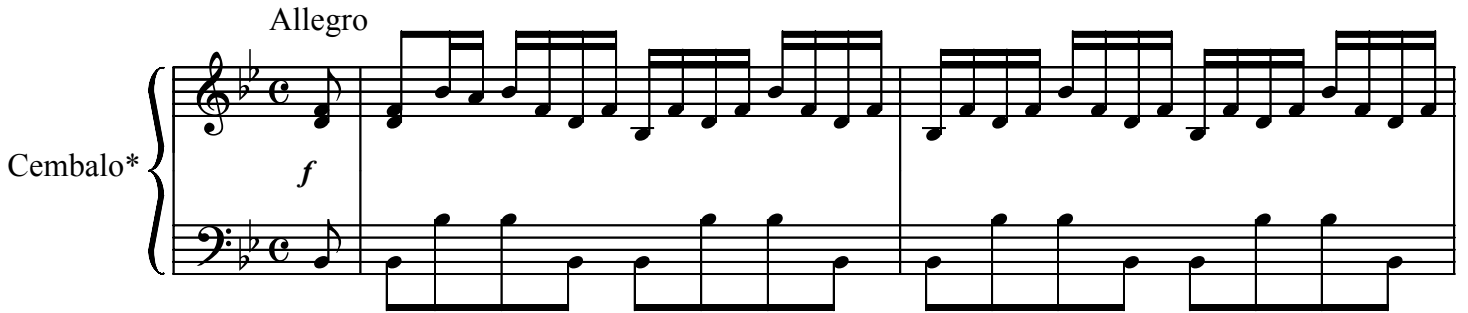
Antonio Vivaldi

Realization of Basso Continuo by David Rothschild

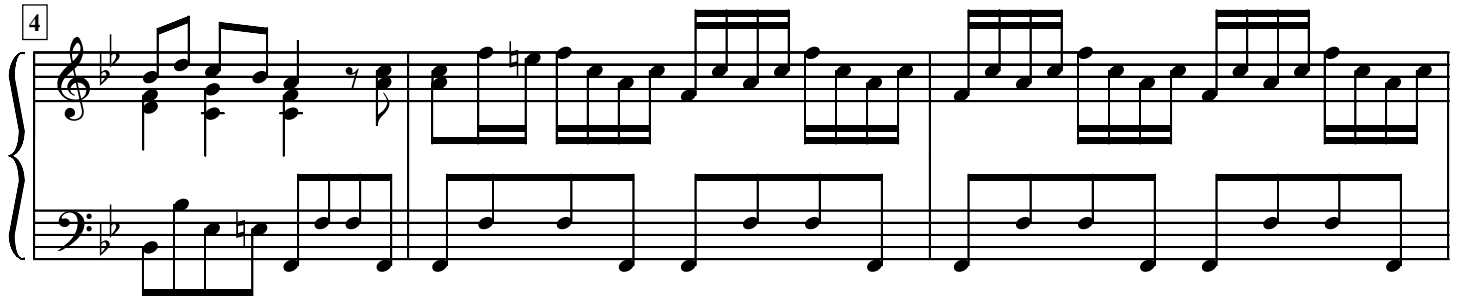
Allegro

Cembalo*

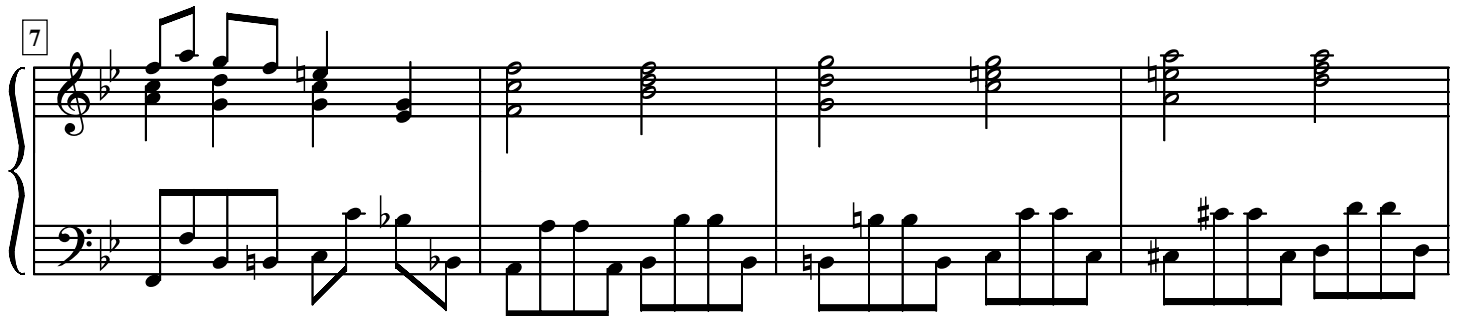
f



4

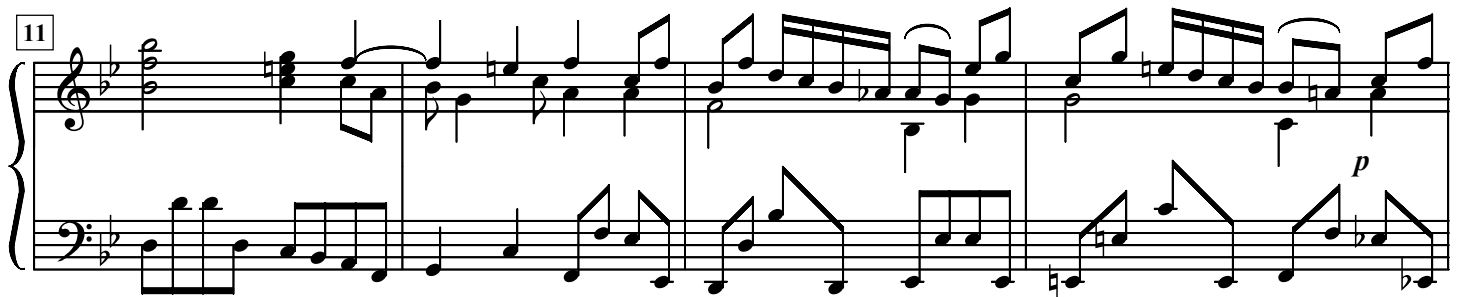


7



11

p



* In the absence of a harpsichord, this part may be played on an organ instead.

15

System 15: Treble and bass staves. Treble staff has eighth-note runs and chords. Bass staff has eighth-note runs. A forte (*f*) dynamic marking is present in the second measure of the bass staff.

19

System 19: Treble and bass staves. Treble staff has eighth-note runs and chords. Bass staff has eighth-note runs.

22

System 22: Treble and bass staves. Treble staff has eighth-note runs and chords. Bass staff has eighth-note runs.

26

System 26: Treble and bass staves. Treble staff has chords. Bass staff has eighth-note runs. A *sim.* (simulazione) marking is present in the second measure of the treble staff.

30

System 30: Treble and bass staves. Treble staff has chords. Bass staff has eighth-note runs.

34

Measures 34-36 of a musical score. The key signature has two flats (B-flat and E-flat). Measure 34 features a piano introduction with a treble clef staff containing a whole note chord (B-flat, E-flat, A-flat) and a bass clef staff with a half-note bass line (B-flat, E-flat). Measure 35 begins with a forte (*f*) dynamic, showing a treble clef staff with a half-note chord (B-flat, E-flat, A-flat) and a bass clef staff with a half-note bass line (B-flat, E-flat). Measure 36 continues with a treble clef staff featuring a half-note chord (B-flat, E-flat, A-flat) and a bass clef staff with a half-note bass line (B-flat, E-flat).

37

Measures 37-38 of a musical score. The key signature has two flats (B-flat and E-flat). Measure 37 features a treble clef staff with a half-note chord (B-flat, E-flat, A-flat) and a bass clef staff with a half-note bass line (B-flat, E-flat). Measure 38 continues with a treble clef staff featuring a half-note chord (B-flat, E-flat, A-flat) and a bass clef staff with a half-note bass line (B-flat, E-flat).

39

Measures 39-44 of a musical score. The key signature has two flats (B-flat and E-flat). Measure 39 features a treble clef staff with a half-note chord (B-flat, E-flat, A-flat) and a bass clef staff with a half-note bass line (B-flat, E-flat). Measure 40 continues with a treble clef staff featuring a half-note chord (B-flat, E-flat, A-flat) and a bass clef staff with a half-note bass line (B-flat, E-flat). Measure 41 features a treble clef staff with a half-note chord (B-flat, E-flat, A-flat) and a bass clef staff with a half-note bass line (B-flat, E-flat). Measure 42 features a treble clef staff with a half-note chord (B-flat, E-flat, A-flat) and a bass clef staff with a half-note bass line (B-flat, E-flat). Measure 43 features a treble clef staff with a half-note chord (B-flat, E-flat, A-flat) and a bass clef staff with a half-note bass line (B-flat, E-flat). Measure 44 features a treble clef staff with a half-note chord (B-flat, E-flat, A-flat) and a bass clef staff with a half-note bass line (B-flat, E-flat).

45

Measures 45-47 of a musical score. The key signature has two flats (B-flat and E-flat). Measure 45 features a treble clef staff with a half-note chord (B-flat, E-flat, A-flat) and a bass clef staff with a half-note bass line (B-flat, E-flat). Measure 46 continues with a treble clef staff featuring a half-note chord (B-flat, E-flat, A-flat) and a bass clef staff with a half-note bass line (B-flat, E-flat). Measure 47 features a treble clef staff with a half-note chord (B-flat, E-flat, A-flat) and a bass clef staff with a half-note bass line (B-flat, E-flat).

48

Measures 48-50 of a musical score. The key signature has two flats (B-flat and E-flat). Measure 48 features a treble clef staff with a half-note chord (B-flat, E-flat, A-flat) and a bass clef staff with a half-note bass line (B-flat, E-flat). Measure 49 continues with a treble clef staff featuring a half-note chord (B-flat, E-flat, A-flat) and a bass clef staff with a half-note bass line (B-flat, E-flat). Measure 50 features a treble clef staff with a half-note chord (B-flat, E-flat, A-flat) and a bass clef staff with a half-note bass line (B-flat, E-flat).

50

Measures 50-52 of a musical score in B-flat major. The right hand features a complex melody with many beamed sixteenth and thirty-second notes, while the left hand plays a steady eighth-note accompaniment.

53

Measures 53-56 of the musical score. The right hand continues with a melodic line featuring some slurs and ties, and the left hand maintains its eighth-note accompaniment.

57

Measures 57-60 of the musical score. The right hand has a more rhythmic melody with frequent rests, and the left hand continues with eighth-note accompaniment.

61

Measures 61-67 of the musical score. Measures 61-63 show a change in the right hand's texture with chords and rests, while the left hand continues. Measures 64-67 return to a more active right hand melody.

68

Measures 68-71 of the musical score. Measures 68-69 feature a fast, continuous sixteenth-note melody in the right hand. Measures 70-71 show a brief rest in the right hand before it resumes.

80

Measures 80-82 of a piano piece in B-flat major. Measure 80 features a rapid sixteenth-note arpeggiated pattern in the right hand and a steady eighth-note bass line in the left hand. Measures 81 and 82 continue the right-hand pattern with some chordal textures, while the left hand maintains a rhythmic accompaniment.

83

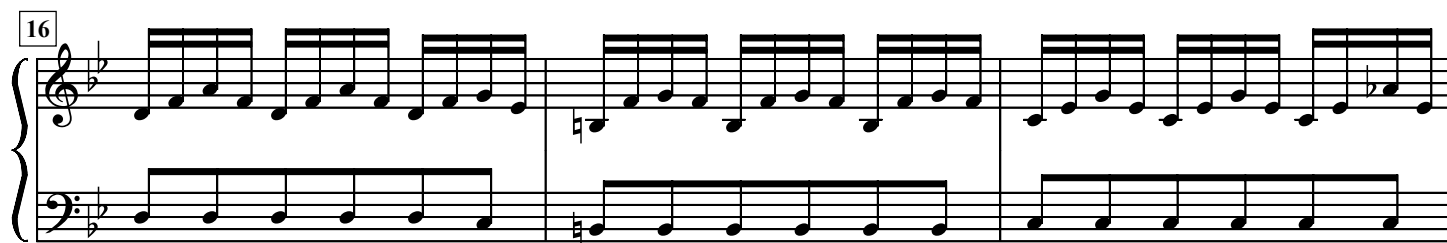
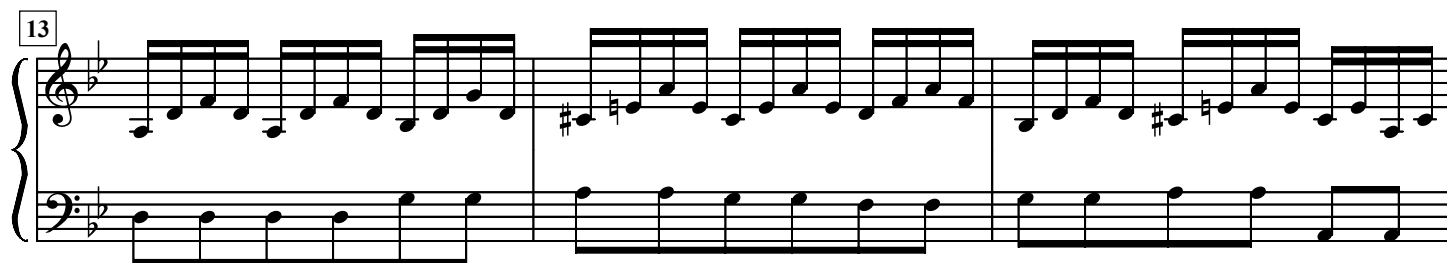
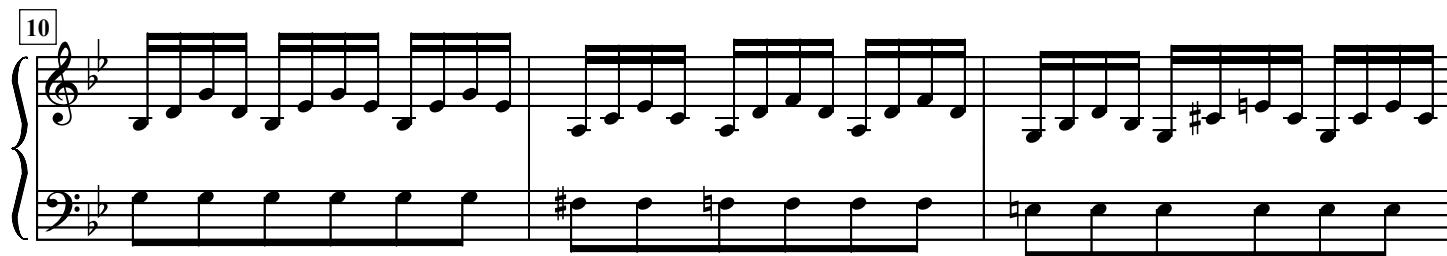
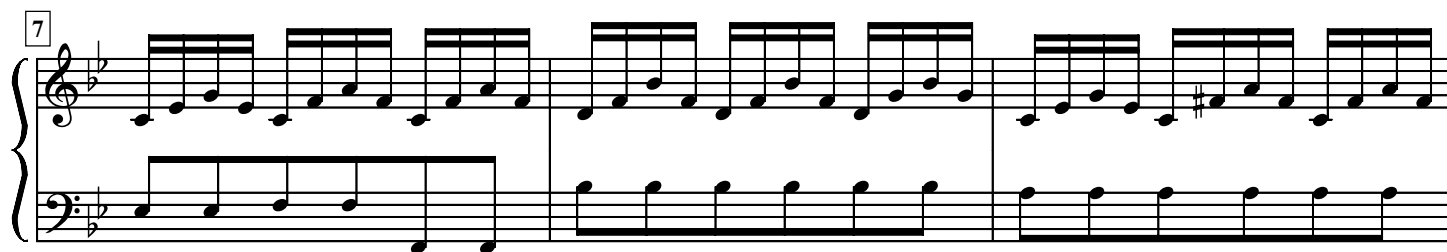
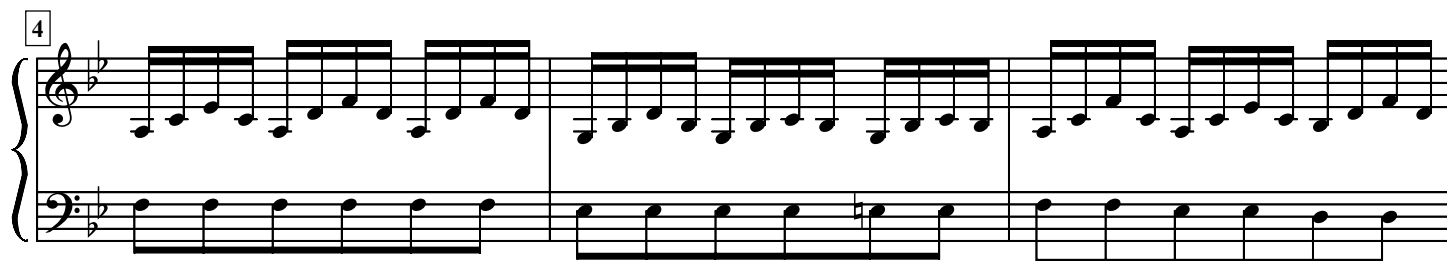
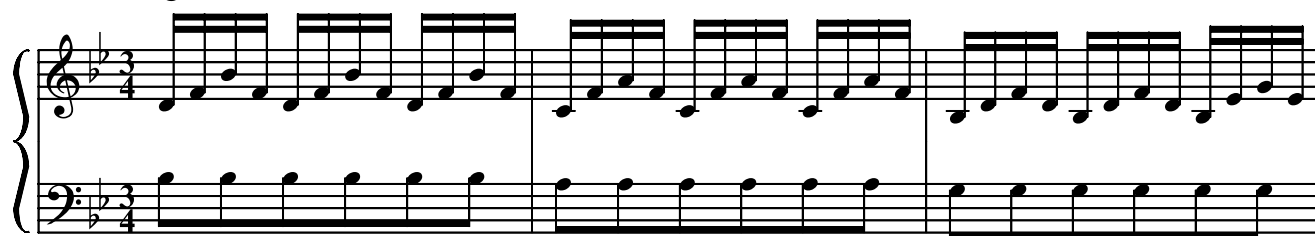
Measures 83-85 of the piano piece. Measure 83 shows a change in the right-hand texture with more sustained notes. Measure 84 includes a piano (*p*) dynamic marking. Measure 85 features a forte (*f*) dynamic marking and a more active right-hand melody. The left hand continues with a consistent eighth-note pattern.

86

Measures 86-88 of the piano piece. Measure 86 introduces a new texture with sustained chords in the right hand. Measures 87 and 88 continue this chordal texture, with the right hand holding long notes and the left hand providing a rhythmic foundation. The piece concludes with a final chord in measure 88.

Largo

II



19

Measures 19-21. Treble clef: eighth-note chords. Bass clef: eighth-note bass line.

22

Measures 22-24. Treble clef: eighth-note chords. Bass clef: eighth-note bass line.

25

Measures 25-27. Treble clef: eighth-note chords. Bass clef: eighth-note bass line.

28

Measures 28-30. Treble clef: eighth-note chords. Bass clef: eighth-note bass line.

31

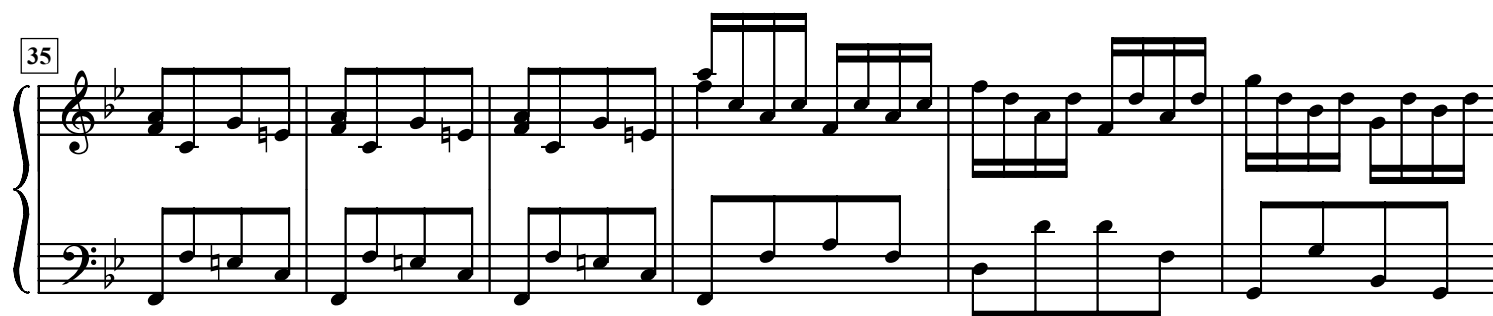
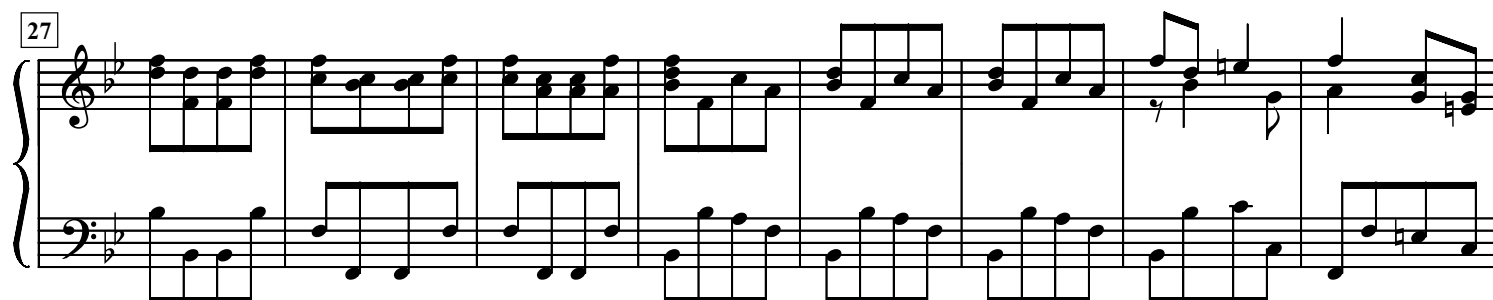
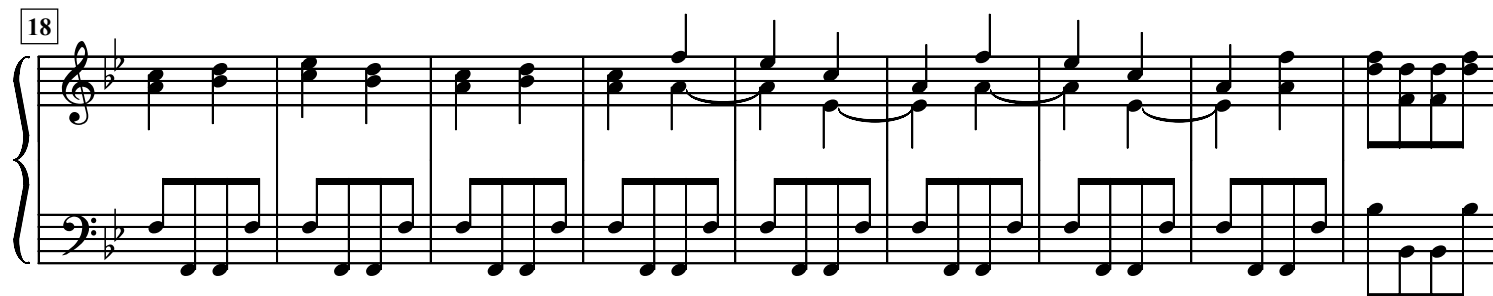
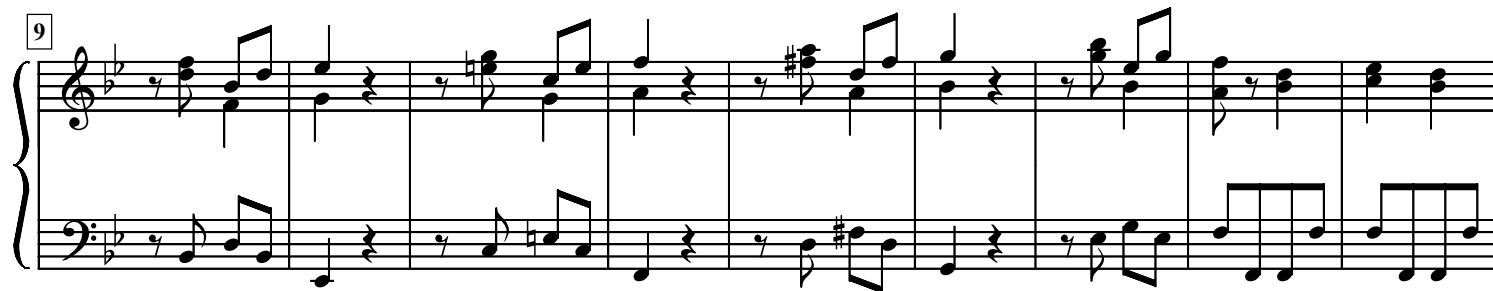
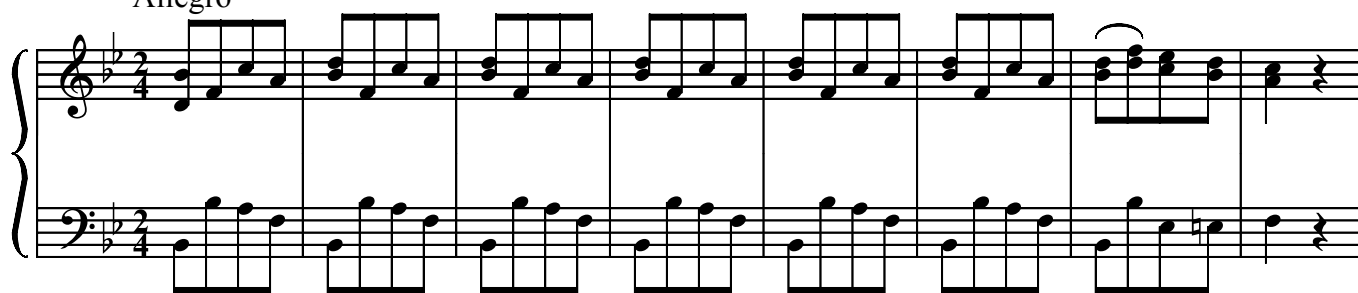
Measures 31-33. Treble clef: eighth-note chords. Bass clef: eighth-note bass line.

34

Measures 34-36. Treble clef: eighth-note chords. Bass clef: eighth-note bass line.

III

Allegro



41

System 41-46: This system contains six measures. The right hand features a complex melodic line with many beamed sixteenth and thirty-second notes, including some triplets. The left hand provides a steady accompaniment of eighth notes. The key signature has two flats (B-flat and E-flat).

47

System 47-54: This system contains eight measures. The right hand continues with a melodic line of eighth and sixteenth notes, often beamed in pairs. The left hand plays a consistent eighth-note accompaniment. The key signature remains two flats.

55

System 55-62: This system contains eight measures. The right hand has a more active melodic line with frequent sixteenth-note runs. The left hand continues with eighth-note accompaniment. The key signature remains two flats.

63

System 63-69: This system contains seven measures. The right hand features a melodic line with many beamed sixteenth notes. The left hand plays eighth-note accompaniment. The key signature remains two flats.

70

System 70-75: This system contains six measures. The right hand has a melodic line with beamed sixteenth notes. The left hand plays eighth-note accompaniment. The key signature remains two flats.

75

System 75: Treble and bass staves. Treble staff has a key signature of two flats and a common time signature. It begins with a whole rest, followed by eighth-note chords and a descending eighth-note scale. Bass staff features a whole rest, followed by eighth-note chords and a descending eighth-note scale.

84

System 84: Treble and bass staves. Treble staff has a key signature of two flats and a common time signature. It begins with a whole rest, followed by eighth-note chords and a descending eighth-note scale. Bass staff features a whole rest, followed by eighth-note chords and a descending eighth-note scale.

93

System 93: Treble and bass staves. Treble staff has a key signature of two flats and a common time signature. It begins with a whole rest, followed by eighth-note chords and a descending eighth-note scale. Bass staff features a whole rest, followed by eighth-note chords and a descending eighth-note scale.

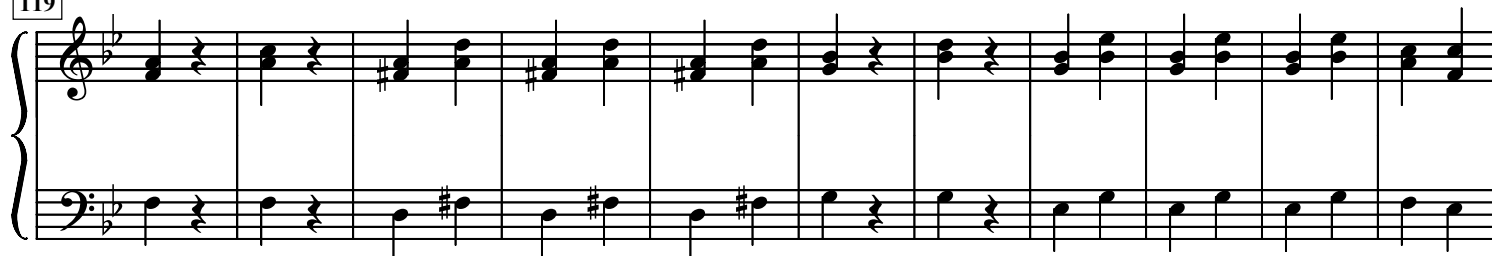
102

System 102: Treble and bass staves. Treble staff has a key signature of two flats and a common time signature. It begins with a whole rest, followed by eighth-note chords and a descending eighth-note scale. Bass staff features a whole rest, followed by eighth-note chords and a descending eighth-note scale.

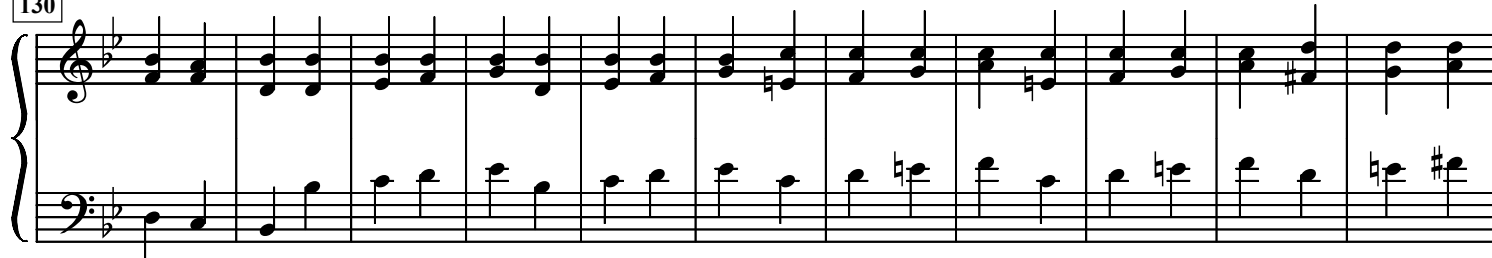
109

System 109: Treble and bass staves. Treble staff has a key signature of two flats and a common time signature. It begins with a whole rest, followed by eighth-note chords and a descending eighth-note scale. Bass staff features a whole rest, followed by eighth-note chords and a descending eighth-note scale.

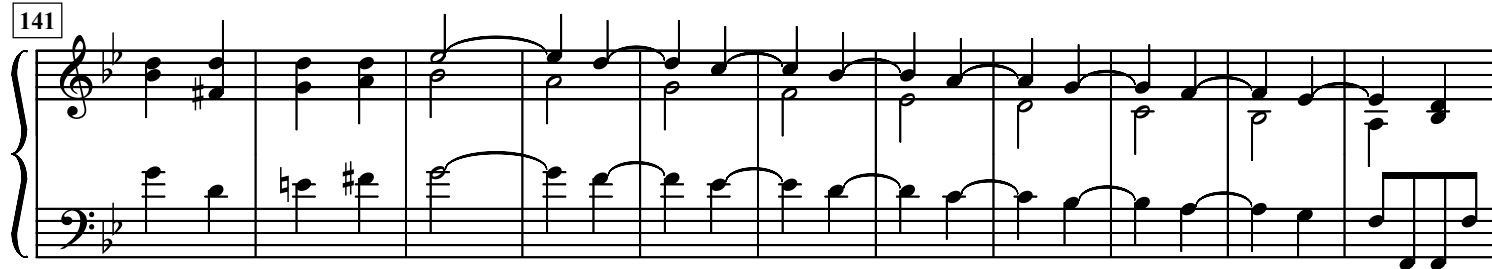
119



130



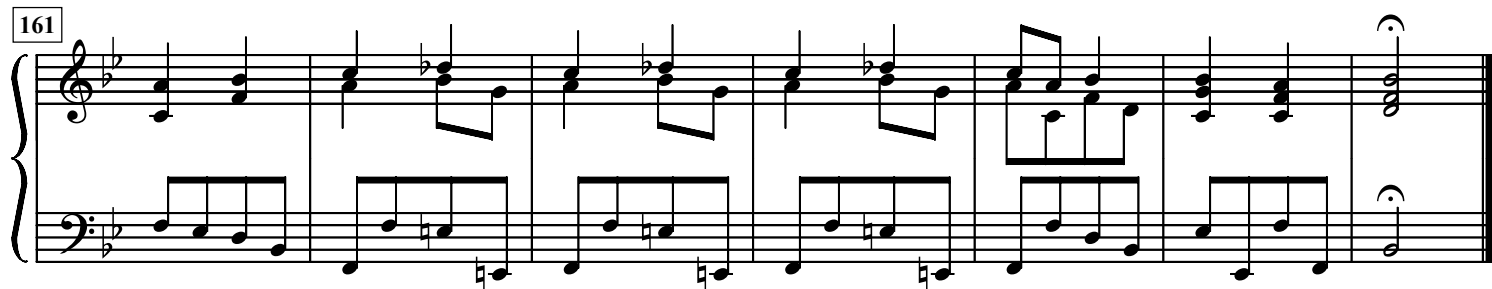
141



152



161



FINE