

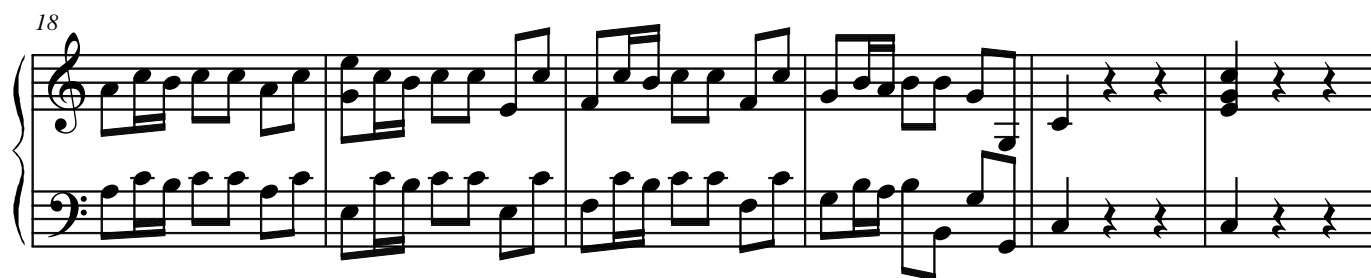
Organ

III

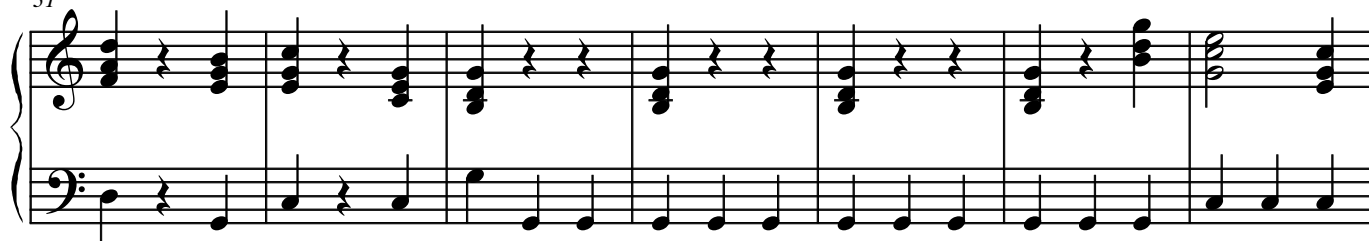
Antonio Vivaldi (1678-1741)

Arr. Michel Rondeau

Allegro (♩ = circa 120)



31



38



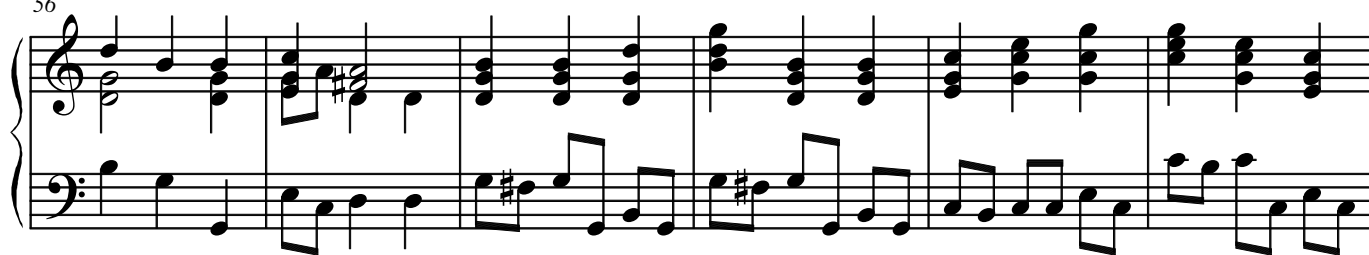
43



49



56



62



67

Measures 67-71 of the organ piece. The right hand features block chords in the treble clef, while the left hand plays a continuous eighth-note bass line in the bass clef. The key signature has one sharp (F#).

72

Measures 72-76. The right hand continues with block chords, and the left hand's eighth-note pattern becomes more complex, including some beamed sixteenth notes.

77

Measures 77-82. Measures 77-80 maintain the eighth-note bass line. In measures 81 and 82, the left hand plays a steady quarter-note bass line, and the right hand has some rests.

83

Measures 83-90. The right hand plays a series of block chords with rests, while the left hand plays a steady quarter-note bass line.

91

Measures 91-97. The right hand consists of block chords with rests, and the left hand continues with a steady quarter-note bass line.

98

Measures 98-104. The right hand features block chords with eighth-note rests, and the left hand plays a steady quarter-note bass line.

105



112



118



124



129

