

## II

Giuseppe Torelli (1658-1709)

Arr. Michel Rondeau

Allegro (♩. = circa 55)

Trumpet in C

Violin I

Violin II

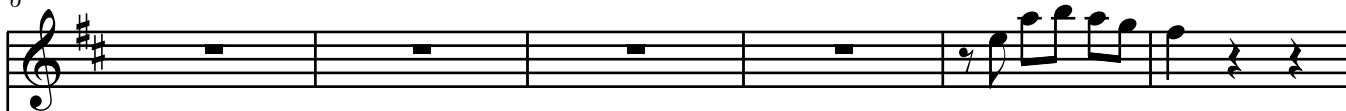
Viola

Cello

Double Bass

Harpsichord

C Tpt.



Vln. I



Vln. II



Vla.



Vc.



D.B.



Hpschd.



12

C Tpt.

Vln. I

Vln. II

Vla.

Vc.

D.B.

Hpschd.

12

This musical score page contains measures 12 through 17, marked with a rehearsal symbol 'II' at the top. The score is for a chamber ensemble consisting of C Trumpet, Violin I, Violin II, Viola, Violoncello, Double Bass, and Harpsichord. The key signature is D major (two sharps). The C Trumpet part is mostly rests. The Violin I and II parts play a melodic line of eighth and sixteenth notes. The Viola, Violoncello, and Double Bass parts provide harmonic support with various note values and rests. The Harpsichord part consists of chords and single notes.

4

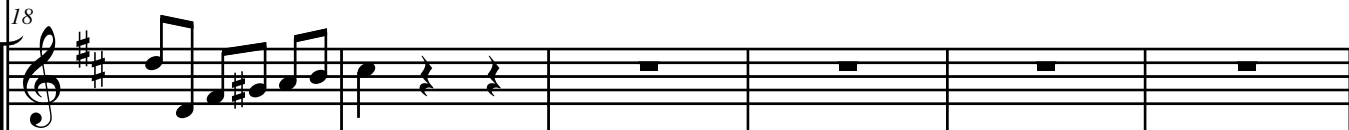
II

18

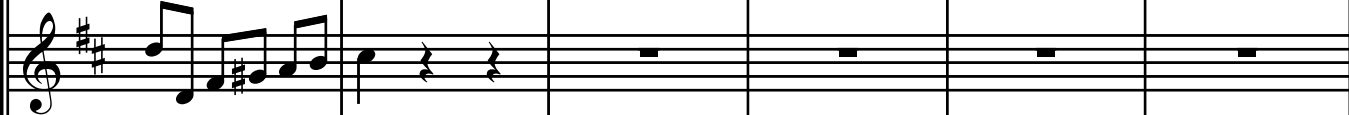
C Tpt.



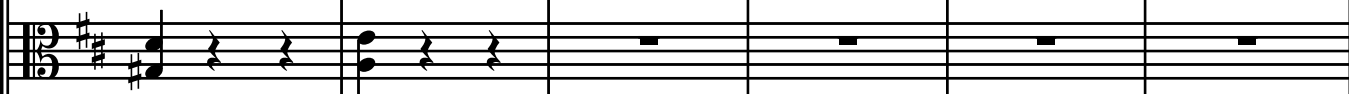
Vln. I



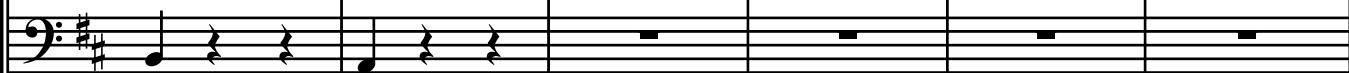
Vln. II



Vla.



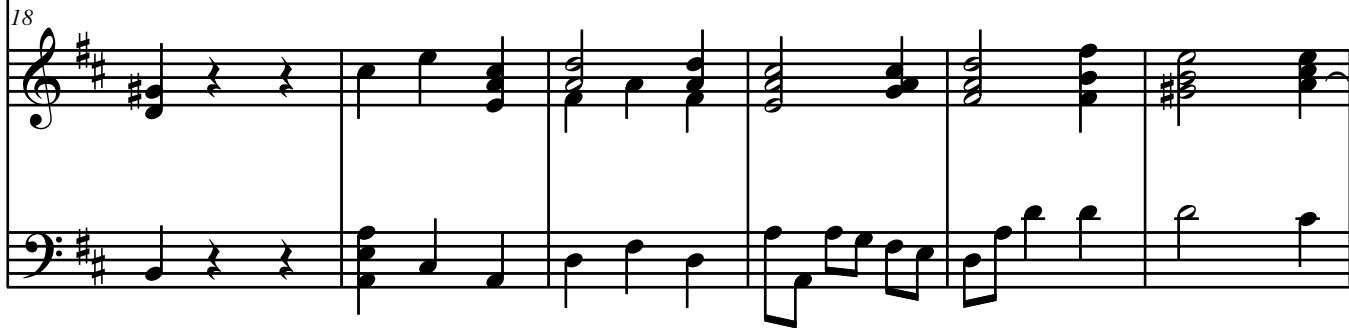
Vc.



D.B.



Hpschd.



24

C Tpt.

24

Vln. I

Vln. II

Vla.

Vc.

D.B.

24

Hpschd.

This musical score page contains measures 24 through 29, marked with a rehearsal symbol 'II' at the top. The score is for a full orchestra and includes a Harpsichord. The instruments are arranged in the following order from top to bottom: C Trumpet, Violin I, Violin II, Viola, Violoncello, Double Bass, and Harpsichord. The key signature is D major (two sharps). Measure 24 begins with a measure rest for the C Trumpet, which then plays a melodic line with a trill on the second measure. The strings (Violins, Viola, Cello, and Bass) play a rhythmic pattern of eighth and sixteenth notes. The Harpsichord provides harmonic support with chords and single notes. The score ends with a double bar line at the end of measure 29.

6

30

II

C Tpt.



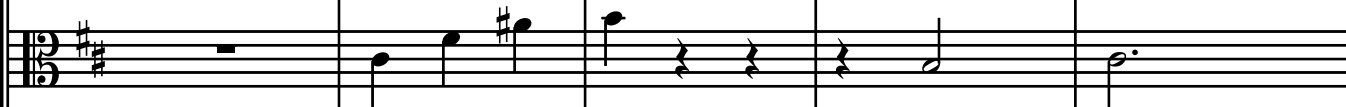
Vln. I



Vln. II



Vla.



Vc.



D.B.



Hpschd.



35

C Tpt.

Vln. I

Vln. II

Vla.

Vc.

D.B.

Hpschd.

This musical score page contains measures 35 through 40 of a piece in D major. The instrumentation includes C Tpt., Vln. I, Vln. II, Vla., Vc., D.B., and Hpschd. The C Tpt. part consists of whole rests. The Vln. I and Vln. II parts play a melodic line of eighth notes. The Vla., Vc., and D.B. parts provide a harmonic foundation with a mix of eighth and quarter notes. The Hpschd. part features a simple accompaniment of quarter notes in the right hand and eighth notes in the left hand.

41

C Tpt.

Vln. I

Vln. II

Vla.

Vc.

D.B.

Hpschd.

This musical score page contains measures 41 through 46 of a piece in D major. The instrumentation includes C Tpt., Vln. I, Vln. II, Vla., Vc., D.B., and Hpschd. The C Tpt. part consists of whole rests. The Violin I and II parts play a continuous eighth-note figure. The Viola, Violoncello, and Double Bass parts provide a harmonic foundation with a mix of eighth and quarter notes. The Harpsichord part features a simple harmonic accompaniment with chords and single notes.



47

C Tpt.

Vln. I

Vln. II

Vla.

Vc.

D.B.

Hpschd.

This musical score page contains measures 47 through 52. The key signature is D major (two sharps). The instruments are C Trumpet, Violin I, Violin II, Viola, Violoncello, Double Bass, and Harpsichord. Measures 47 and 48 feature a melodic line in the strings and harpsichord, with a trill marked in the Violin I and II parts. Measures 49 and 50 show a change in the string accompaniment. Measures 51 and 52 continue the melodic development in the strings and harpsichord.

53

C Tpt.

Vln. I

Vln. II

Vla.

Vc.

D.B.

Hpschd.

This musical score page contains measures 53 through 58. The key signature is D major (two sharps). The instruments are C Trumpet, Violin I, Violin II, Viola, Violoncello, Double Bass, and Harpsichord. Measures 53-54 show the strings and harpsichord playing a rhythmic pattern of eighth and sixteenth notes. Measures 55-56 feature a melodic line in the C Trumpet and Violins. Measures 57-58 show a final melodic phrase in the C Trumpet and Violins, with the strings and harpsichord providing harmonic support.

59

C Tpt.

Vln. I

Vln. II

Vla.

Vc.

D.B.

Hpschd.

This musical score page contains measures 59 through 64. The key signature is D major (two sharps). The instruments are C Tpt., Vln. I, Vln. II, Vla., Vc., D.B., and Hpschd. The C Tpt. part has a measure rest in 59, followed by a sixteenth rest, then eighth notes D5, E5, F#5, G5, and a quarter rest in 60. Vln. I and Vln. II play eighth-note patterns in 59 and 60, then have measure rests in 61 and 62, and resume in 63. Vla. plays chords in 59 and 60, then single notes in 61 and 62, and chords in 63 and 64. Vc. and D.B. play a steady eighth-note bass line. Hpschd. plays chords in 59 and 60, and single notes in 61 and 62, before playing a final chord in 64.

65

C Tpt.

Vln. I

Vln. II

Vla.

Vc.

D.B.

Hpschd.

This musical score page contains measures 65 through 69. The key signature is D major (two sharps). The instruments are C Tpt., Vln. I, Vln. II, Vla., Vc., D.B., and Hpschd. The C Tpt. part has rests in measures 65-67 and enters in measure 68 with a quarter note D, followed by eighth notes E, F#, G, A, B, C, D. The Vln. I and Vln. II parts play a melodic line of eighth notes: D, E, F#, G, A, B, C, D in measure 65; E, F#, G, A, B, C, D, E in measure 66; F#, G, A, B, C, D, E, F# in measure 67; and a half note D in measure 68, with rests in measure 69. The Vla., Vc., and D.B. parts play a harmonic line of quarter notes: D in measure 65; E in measure 66; F# in measure 67; and a half note D in measure 68, with rests in measure 69. The Hpschd. part plays chords: D in measure 65; E in measure 66; F# in measure 67; and D in measure 68, with rests in measure 69. The bottom staff of the Hpschd. part plays a bass line of quarter notes: D in measure 65; E in measure 66; F# in measure 67; and a half note D in measure 68, with rests in measure 69.

70

C Tpt.

70

Vln. I

Vln. II

Vla.

Vc.

D.B.

70

Hpschd.

This musical score page contains measures 70 through 75. The key signature is D major (two sharps). The instruments are C Trumpet, Violin I, Violin II, Viola, Violoncello, Double Bass, and Harpsichord. The C Trumpet part begins with a trill on the first measure. The strings provide harmonic support with various rhythmic patterns, including eighth and sixteenth notes. The harpsichord plays chords in the right hand and a bass line in the left hand.

76

C Tpt.

Vln. I

Vln. II

Vla.

Vc.

D.B.

Hpschd.

This musical score page contains measures 76, 77, and 78, marked with a rehearsal symbol 'II'. The score is for a chamber ensemble consisting of C Trumpet, Violin I, Violin II, Viola, Violoncello, Double Bass, and Harpsichord. The key signature is two sharps (F# and C#), and the time signature is 4/4. The C Trumpet part has a melodic line with rests. The Violin I and II parts play a rhythmic eighth-note pattern. The Viola, Violoncello, and Double Bass parts provide a harmonic foundation with sustained notes and rests. The Harpsichord part features a melodic line in the right hand and a harmonic accompaniment in the left hand.