

II

Giuseppe Torelli (1658-1709)
Arr. Michel Rondeau

Grave (♩ = circa 59)

Trumpet in C

Violin I

Violin II

Viola

Cello

Double Bass

Harpsichord

4

C Tpt.



Vln. I



Vln. II



Vla.



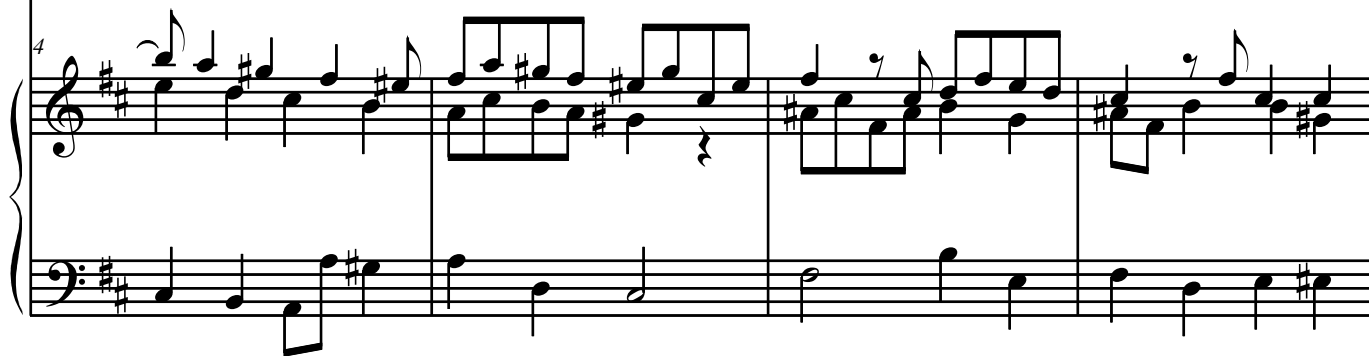
Vc.



D.B.



Hpschd.



8

C Tpt.

Vln. I

Vln. II

Vla.

Vc.

D.B.

Hpschd.

This musical score page contains measures 8 through 11 of a piece in D major. The instrumentation includes C Tpt., Vln. I, Vln. II, Vla., Vc., D.B., and Hpschd. The key signature has two sharps (F# and C#). Measure 8 begins with a forte dynamic and a tempo marking of 8. The C Tpt. part consists of whole rests. Vln. I starts with a trill on D5. Vln. II plays a series of eighth notes. Vla., Vc., and D.B. provide a steady eighth-note accompaniment. The Hpschd. part features chords in the right hand and eighth notes in the left hand. Measures 9 and 10 continue the melodic and harmonic development, with Vln. I and Vln. II playing more complex figures. Measure 11 concludes the section with sustained chords in the strings and a final flourish in the harpsichord.

12

C Tpt.

Vln. I

Vln. II

Vla.

Vc.

D.B.

Hpschd.

12

This musical score page contains measures 12 through 15 of a piece in D major. The instrumentation includes C Trumpet, Violin I, Violin II, Viola, Violoncello, Double Bass, and Harpsichord. The C Trumpet part is silent, indicated by whole rests. The Violin I part features a melodic line with eighth and sixteenth notes, including a triplet in measure 13 and a half-note rest in measure 14. The Violin II part provides a rhythmic accompaniment with eighth and sixteenth notes. The Viola part has a similar rhythmic pattern to the Violin II. The Violoncello and Double Bass parts play a steady eighth-note accompaniment. The Harpsichord part has a complex texture with chords and moving lines in both staves, including a triplet in the right hand in measure 13. The score is divided into four measures by vertical bar lines.

16

C Tpt.

Vln. I

Vln. II

Vla.

Vc.

D.B.

Hpschd.

16

16

16

16

16

16

16