

# CONCERTO (54:D3)

for 3 Clarini, 2 Oboes, Timpani, Strings  
and Bass Continuo

## Oboe 2

Georg Philipp Telemann (1681-1767)

Arr. Michel Rondeau

1 - Intrada (Adagio)  $\text{♩} = 100$

4

7

10

13

17

20

23

27

## 2 - Allegro

31 **2 - Allegro**

Musical notation for the second system of the piece "2 - Allegro". The notation is in treble clef, key of D major (two sharps), and common time (C). The melody consists of eighth and sixteenth notes, with some measures containing rests. A trill ornament is indicated above a note in the fourth measure. The system ends with a repeat sign.

36

Measures 36-39 of the piece. Measure 36: Treble clef, key signature of two sharps (F# and C#), 4/4 time. The melody starts on D4, moves to E4, then F#4, and ends with a quarter rest. Measure 37: The melody continues with a quarter rest, then G4, A4, B4, and C#5. Measure 38: The melody continues with a quarter rest, then D5, C#5, B4, and A4. Measure 39: The melody continues with a quarter rest, then G4, F#4, E4, and D4. A trill (tr) is indicated above the D4 in the final measure.

40

tr

44

44

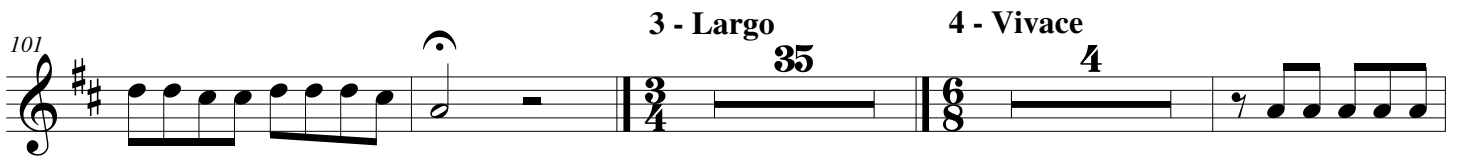
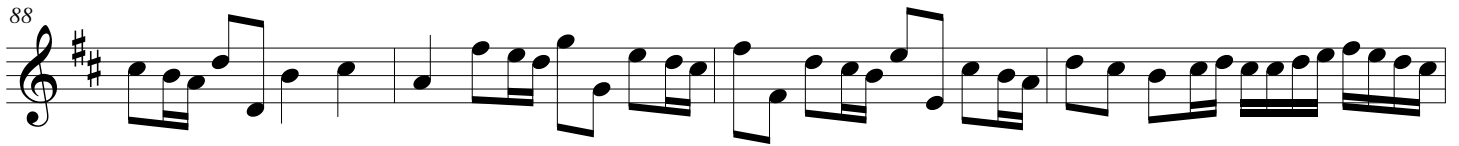
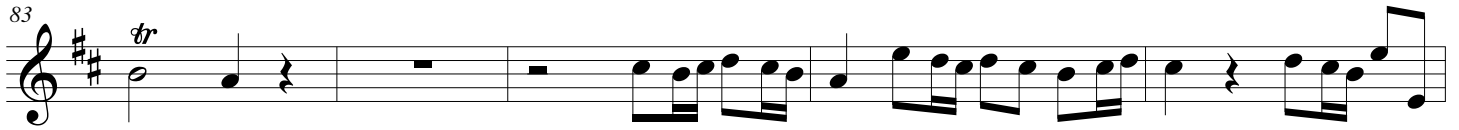
[illegible][illegible]

58 *tr*



62





148

153

158

162

166

173

178

182

186

This musical score for Oboe 2, measures 148-186, is written in treble clef with a key signature of two sharps (F# and C#). The notation includes various musical elements: measures 148-152 feature rapid sixteenth-note runs with a trill (tr) in measure 148; measures 153-157 continue with similar fast passages; measures 158-161 show more complex rhythmic patterns with a trill in measure 158; measures 162-165 consist of flowing sixteenth-note lines; measure 166 contains a trill followed by a triplet of eighth notes; measures 173-177 feature trills and fast sixteenth-note passages; measures 178-181 continue with intricate sixteenth-note figures; measures 182-185 show a mix of eighth and sixteenth notes; and measure 186 concludes with a trill. The score is presented on nine staves, with measure numbers 148, 153, 158, 162, 166, 173, 178, 182, and 186 marking the beginning of each staff.

