

Largo

B. C.

Cello 2

Measures 1-6 of the score. The B. C. part (treble clef) features a melody of eighth and quarter notes, with some rests. The Cello 2 part (bass clef) plays a steady eighth-note accompaniment. The key signature is three sharps (F#, C#, G#) and the time signature is 3/4.

7

Measures 7-14. The B. C. part continues with a similar melodic line, including some chords. The Cello 2 part maintains the eighth-note accompaniment. Measure 14 ends with a double bar line.

15

Measures 15-21. The B. C. part features a more active melody with eighth notes and some chords. The Cello 2 part continues with the eighth-note accompaniment. Measure 21 ends with a double bar line.

22

Measures 22-30. The B. C. part has a melody with some rests and chords. The Cello 2 part continues with the eighth-note accompaniment. Measure 30 ends with a double bar line.

31

Measures 31-38. The B. C. part features a melody with some rests and chords. The Cello 2 part continues with the eighth-note accompaniment. Measure 38 ends with a double bar line.

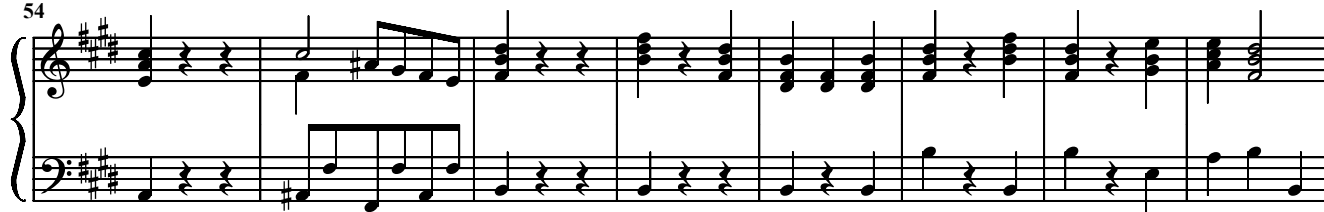
39

Measures 39-45. The B. C. part has a melody with some rests and chords. The Cello 2 part continues with the eighth-note accompaniment. Measure 45 ends with a double bar line.

46

Measures 46-52. The B. C. part features a melody with some rests and chords. The Cello 2 part continues with the eighth-note accompaniment. Measure 52 ends with a double bar line.

54



62

