

Brass Quartet
or 4-part ensemble

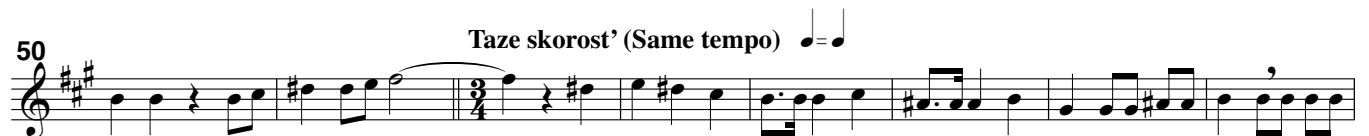
Simbol very: Veruju

Composer: Peter Tchaikovsky 1878
Edited by Klaus Bjerre 2003

Two choruses, ## 8 and 9 from the
Crysostomos liturgy opus 41

E \flat -cornet

Dovol'no skoro (Rather fast)



Brass Quartet
or 4-part ensemble

Simbol very: Veruju

E \flat -cornet

67

76

88

p *mf* *p* *pp*

Detailed description: This block contains three staves of musical notation for the E-flat cornet part. The first staff (measures 67-75) is in 2/4 time with a key signature of three sharps (F#, C#, G#). The second staff (measures 76-87) features a 3/4 time signature change and continues the melodic line. The third staff (measures 88-90) concludes the piece with dynamic markings of *p*, *mf*, *p*, and *pp*.

Posle Simbola very: Svjat

Skoro (Fast)

ff

8

15

Detailed description: This block contains three staves of musical notation for the section 'Posle Simbola very: Svjat'. The first staff (measures 1-7) is in 2/4 time with a key signature of three sharps and a dynamic marking of *ff*. The second staff (measures 8-14) continues the fast-paced melody. The third staff (measures 15-16) ends with a final cadence.