

Trombone - Alto

Chor 2

Musical score for Trombone - Alto, Chor 2. The score consists of nine staves of music, each starting with a measure number in a box. The key signature is one sharp (F#), and the time signature is 3/4. The notation includes various note values (quarter, eighth, sixteenth notes), rests, and fingerings (4, 5). The score ends with a double bar line and a repeat sign.

Measures 1-4: Rest, quarter note G4, quarter note A4, quarter note B4.

Measure 5: Quarter note C5, quarter note B4, quarter note A4, quarter note G4, quarter note F#4.

Measures 6-9: Quarter note E4, quarter note D4, quarter note C4, quarter note B3, quarter note A3, quarter note G3, quarter note F#3, quarter note E3.

Measures 10-14: Quarter note D3, quarter note C3, quarter note B2, quarter note A2, quarter note G2, quarter note F#2, quarter note E2, quarter note D2.

Measures 15-19: Quarter note C2, quarter note B1, quarter note A1, quarter note G1, quarter note F#1, quarter note E1, quarter note D1, quarter note C1.

Measures 20-24: Quarter note B1, quarter note A1, quarter note G1, quarter note F#1, quarter note E1, quarter note D1, quarter note C1, quarter note B1.

Measures 25-29: Quarter note A1, quarter note G1, quarter note F#1, quarter note E1, quarter note D1, quarter note C1, quarter note B1, quarter note A1.

Measures 30-34: Quarter note G1, quarter note F#1, quarter note E1, quarter note D1, quarter note C1, quarter note B1, quarter note A1, quarter note G1.

Measures 35-39: Quarter note F#1, quarter note E1, quarter note D1, quarter note C1, quarter note B1, quarter note A1, quarter note G1, quarter note F#1.

Measures 40-44: Quarter note E1, quarter note D1, quarter note C1, quarter note B1, quarter note A1, quarter note G1, quarter note F#1, quarter note E1.

Measures 45-49: Quarter note D1, quarter note C1, quarter note B1, quarter note A1, quarter note G1, quarter note F#1, quarter note E1, quarter note D1.

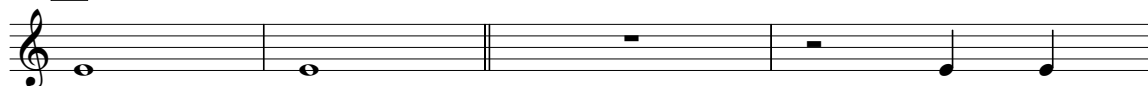
Measures 50-54: Quarter note C1, quarter note B1, quarter note A1, quarter note G1, quarter note F#1, quarter note E1, quarter note D1, quarter note C1.

Measures 55-59: Quarter note B1, quarter note A1, quarter note G1, quarter note F#1, quarter note E1, quarter note D1, quarter note C1, quarter note B1.

Measures 60-64: Quarter note A1, quarter note G1, quarter note F#1, quarter note E1, quarter note D1, quarter note C1, quarter note B1, quarter note A1.

Trombone - Alto

68



72



76



80

