

# Attendite a falsis profetis

Giovanni Battista Strata (c.1579-1651)

Di Simone Molinaro...il Terzo Libro de Motetetti à 5, Venezia 1609

Basso continuo realization by Christian Mondrup

Harpischord  
or organ

Measures 1-7 of the piece. The notation is for a harpsichord or organ, featuring a treble and a bass staff. The key signature is one flat (B-flat) and the time signature is common time (C). The melody in the treble staff begins with a half rest, followed by a series of eighth and quarter notes. The bass staff provides a continuous accompaniment with a mix of eighth and quarter notes.

8

Measures 8-16. The treble staff continues the melodic line with various intervals and rests. The bass staff maintains the accompaniment pattern. Measure 16 ends with a double bar line.

17

Measures 17-25. The treble staff features more complex chordal textures and melodic movement. The bass staff continues with a steady accompaniment. Measure 25 ends with a double bar line.

26

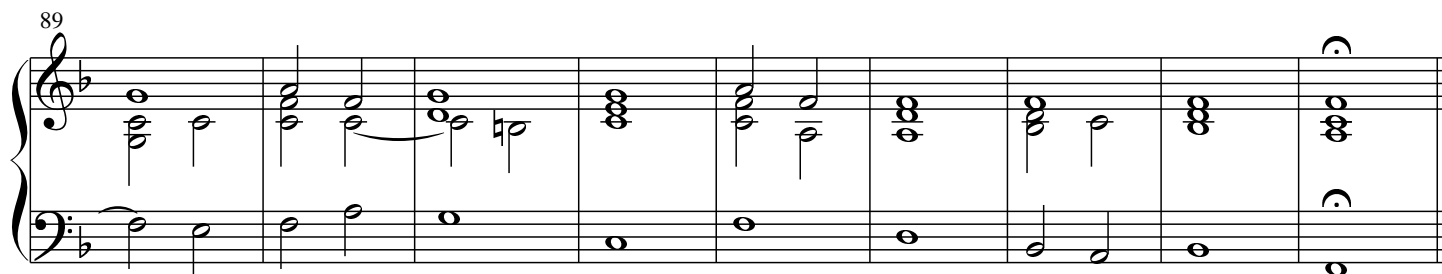
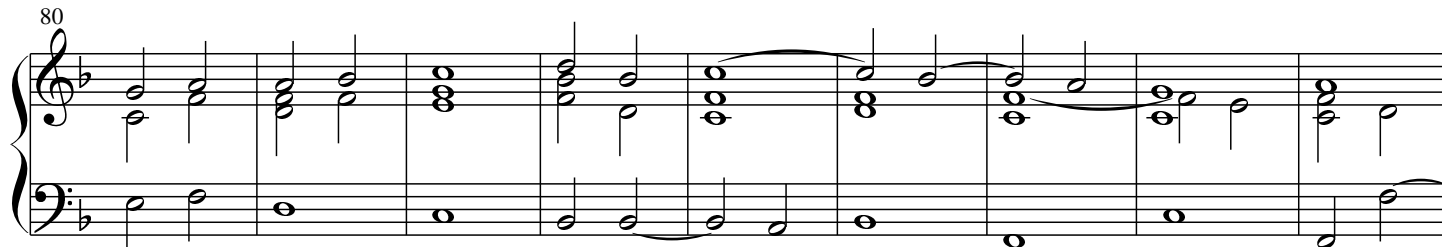
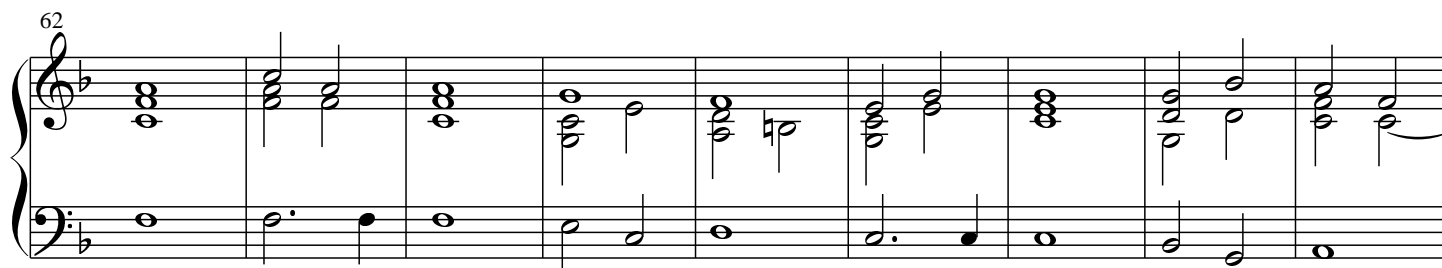
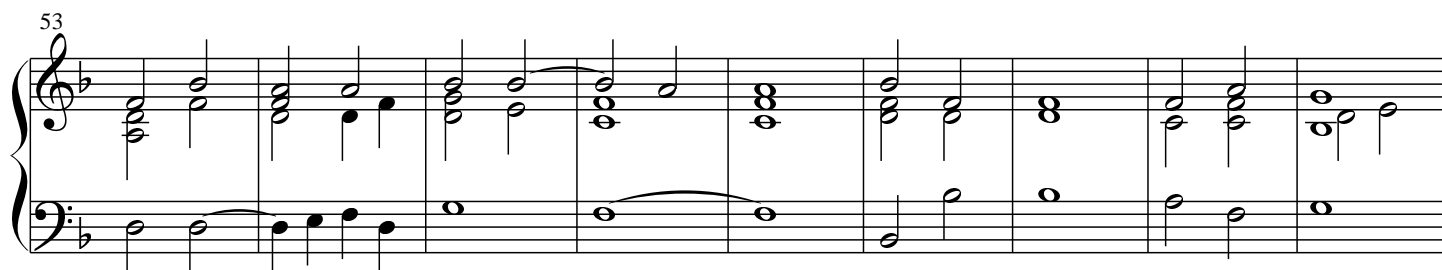
Measures 26-34. The treble staff shows a variety of chordal and melodic patterns. The bass staff provides a consistent accompaniment. Measure 34 ends with a double bar line.

35

Measures 35-43. The treble staff includes a melodic phrase with a sharp sign (F#) in measure 40. The bass staff continues the accompaniment. Measure 43 ends with a double bar line.

44

Measures 44-52. The treble staff features a melodic line with a sharp sign (F#) in measure 48. The bass staff continues the accompaniment. Measure 52 ends with a double bar line.



Watch out for false prophets. They come to you in sheep's clothing, but inwardly they are ferocious wolves.  
By their fruit you will recognize them.  
*Matthew 7,15*