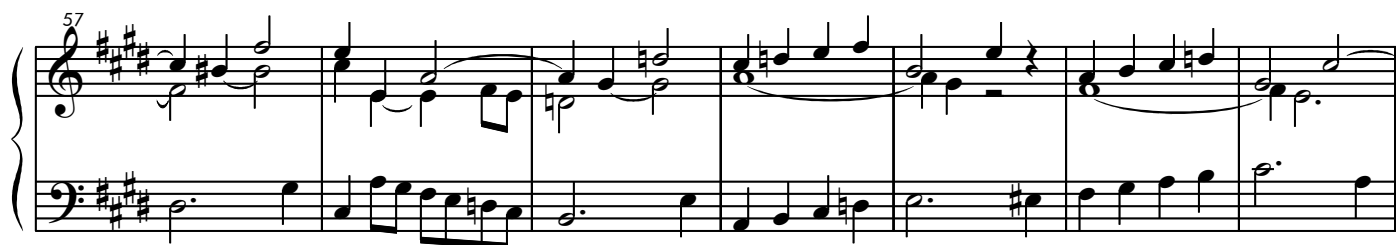
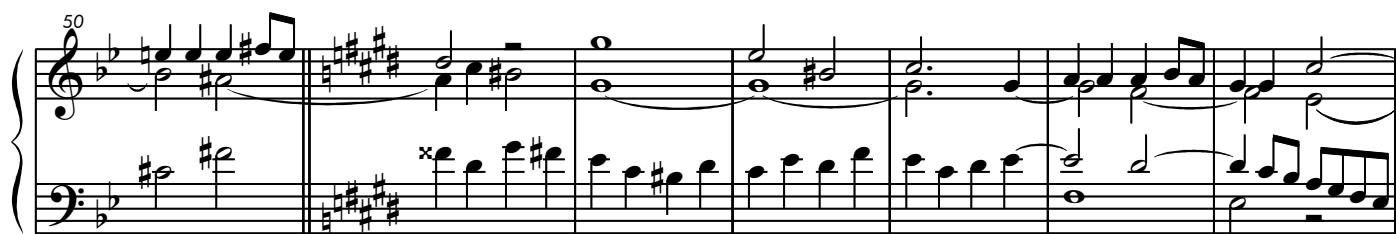


Fugue en sol mineur

Nicolas SEJAN
(1745-1819)





78

System 1 (Measures 78-84): Treble staff features eighth-note runs and quarter notes, while the bass staff provides a steady accompaniment of eighth and quarter notes. Measure 84 ends with a double bar line.

85

System 2 (Measures 85-91): The treble staff continues with eighth-note patterns and some rests, while the bass staff has longer note values including half notes. Measure 91 ends with a double bar line.

92

System 3 (Measures 92-99): This system shows more complex chordal textures in the treble staff, with the bass staff maintaining a rhythmic foundation. Measure 99 ends with a double bar line.

100

System 4 (Measures 100-107): The treble staff features rapid sixteenth-note passages, while the bass staff has sustained notes and some movement. Measure 107 ends with a double bar line.

108

System 5 (Measures 108-114): The treble staff has a mix of eighth and quarter notes, while the bass staff features half notes and some rests. Measure 114 ends with a double bar line.

115

System 6 (Measures 115-121): The final system on the page, featuring dense chordal structures in the treble and moving lines in the bass. Measure 121 ends with a double bar line.