

Sonata in e (K.81)

for Solo Violin & Strings

Viola

Domenico Scarlatti (1685-1757)

Arr. Michel Rondeau

1 - Grave ♩ = 120

5

11

16 2 - Allegro ♩ = 100

25

35

45

55

65

75

85



94



104



114 3-Grave ♩ = 70



124



133

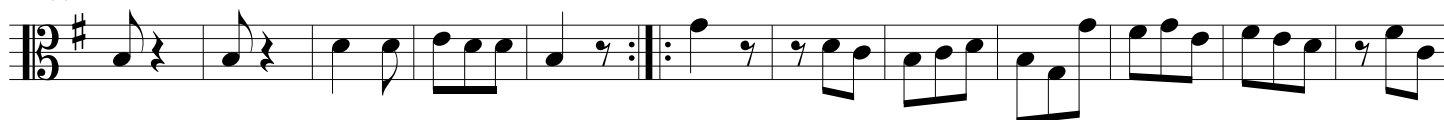
4 - Allegro



143



156



168



180

