

SONATA in c (K.115)

for String Ensemble

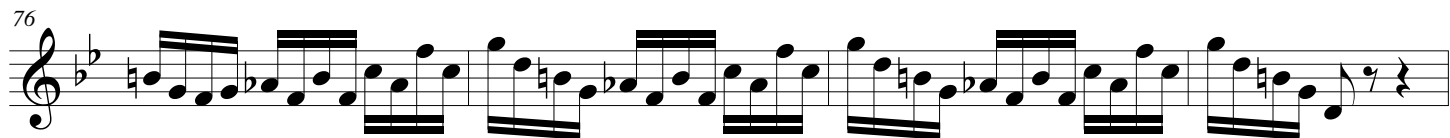
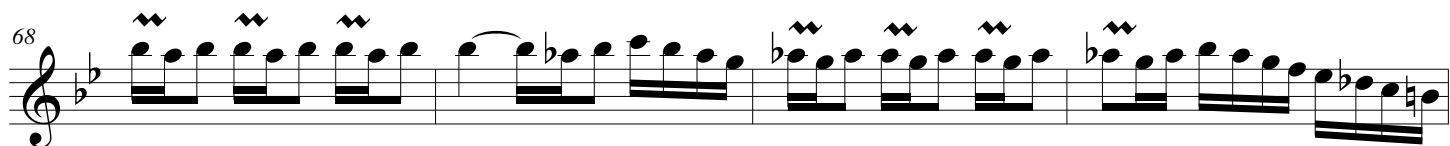
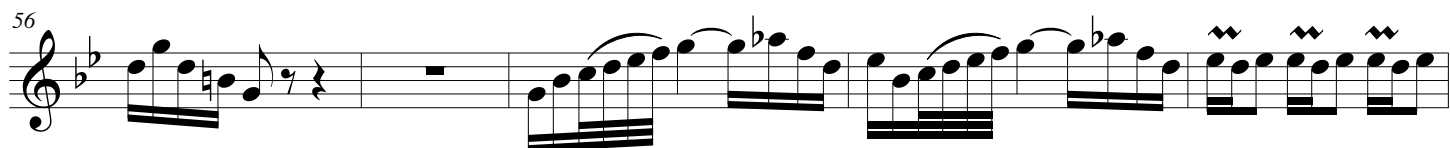
Violin I

Domenico Scarlatti (1685-1757)


Arr. Michel Rondeau

Allegro ♩ = 100


The musical score for Violin I is written in treble clef with a key signature of one flat (Bb) and a 3/4 time signature. The tempo is marked 'Allegro' with a quarter note equal to 100 beats per minute. The score is divided into eight staves, each containing a 5-measure phrase. The first staff begins with a treble clef and a key signature of one flat. The second staff starts with a measure rest. The third staff begins with a treble clef and a key signature of one flat. The fourth staff starts with a measure rest. The fifth staff begins with a treble clef and a key signature of one flat. The sixth staff starts with a measure rest. The seventh staff begins with a treble clef and a key signature of one flat. The eighth staff starts with a measure rest. The score concludes with a final measure rest.



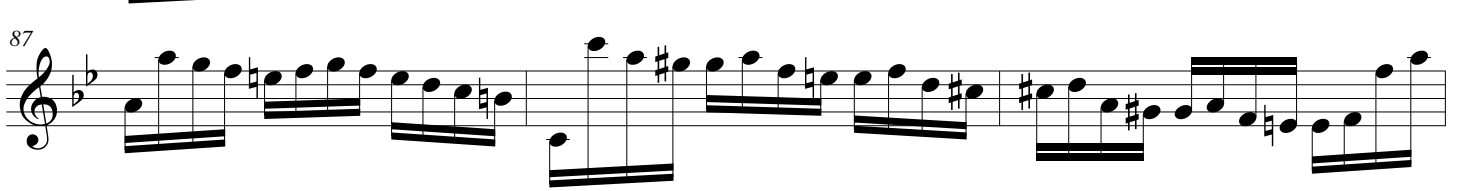
80



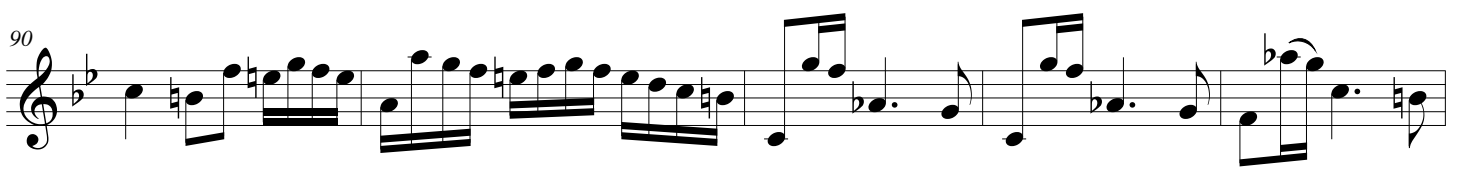
84



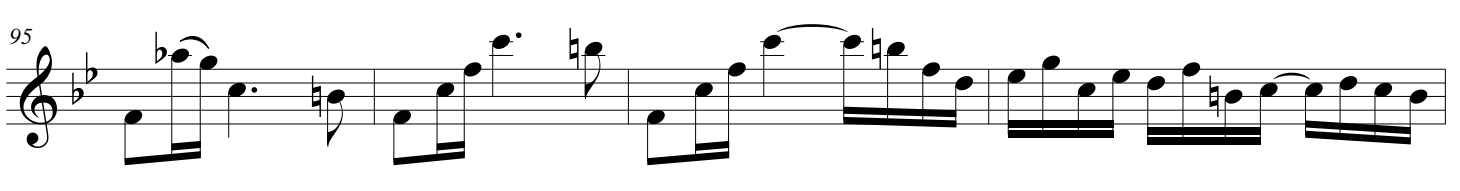
87




90



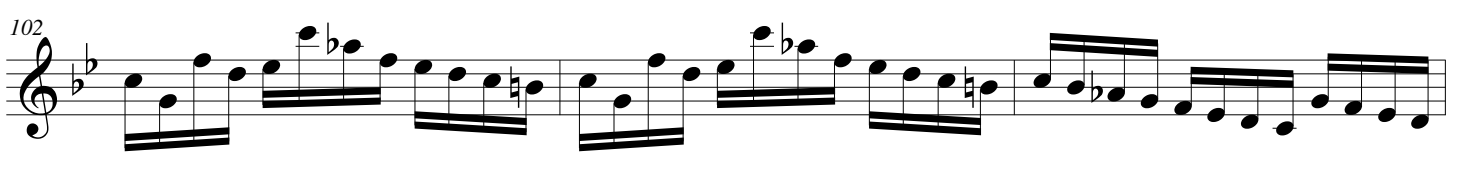
95



99



102



105

