

# SONATA in A (K.113)

*for Orchestra*

Cello

Domenico Scarlatti (1685-1757)

Arr. Michel Rondeau

Allegro co brio  $\text{♩} = 110$

7

13

20

26

32

38

44

50

56

*f*

*mp*

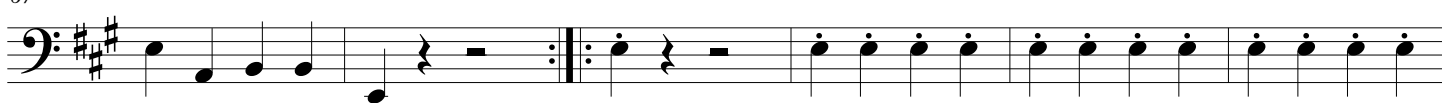
*f*

*mp*

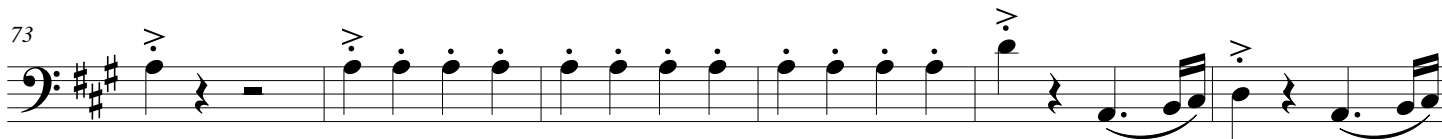
62



67



73



79



85



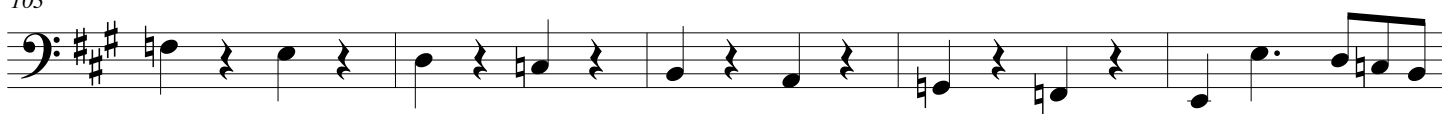
91



97



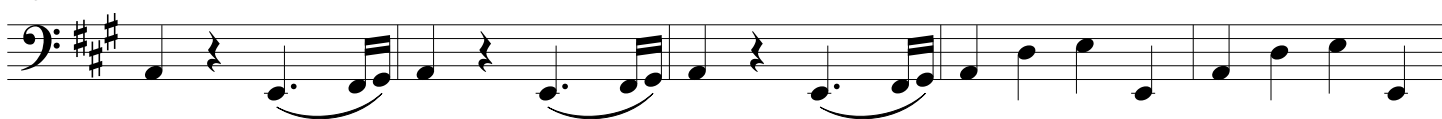
103



108



113



118

