

Flauto Soprano

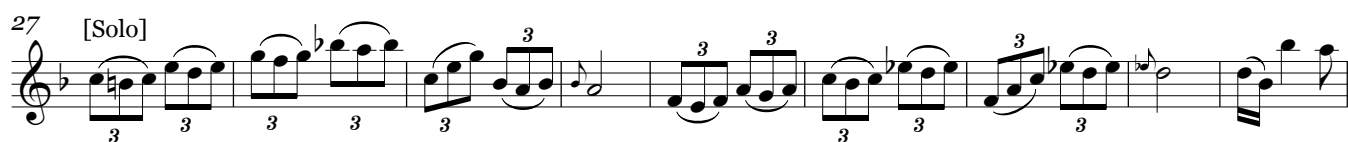
# Concerto per Flauto

in Fá Maggiore

Giuseppe Sammartini

**Allegro**

[Tutti]



V.S.

97 *tr* [Tutti]

108

117 [Solo]

123

131

138

144

150 *tr*

157 **D.C.  
al Fine**

The musical score for Soprano Flute consists of nine staves of music. The first staff (measures 97-107) begins with a trill on G4 and a [Tutti] marking. The second staff (measures 108-116) continues the melodic line. The third staff (measures 117-122) is marked [Solo] and features a more active, sixteenth-note melody. The fourth staff (measures 123-130) continues the solo passage. The fifth staff (measures 131-137) shows a return to a more lyrical, eighth-note melody. The sixth staff (measures 138-143) continues this melodic line. The seventh staff (measures 144-149) features a more rhythmic, eighth-note pattern. The eighth staff (measures 150-156) includes a trill on G4 and ends with a double bar line. The final staff (measures 157-158) begins with a trill on G4 and ends with a double bar line and the instruction 'D.C. al Fine'.