

# Trifle in F

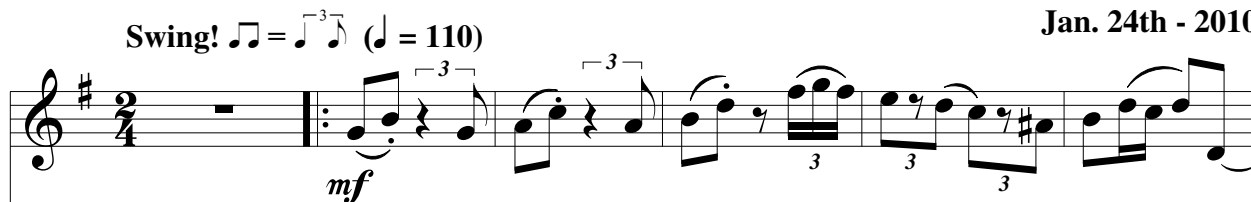
(for three Trumpets and Bass)

## Bb Trumpet 1

Michel Rondeau  
Jan. 24th - 2010

Swing! ♩ =  $\frac{3}{4}$  (♩ = 110)

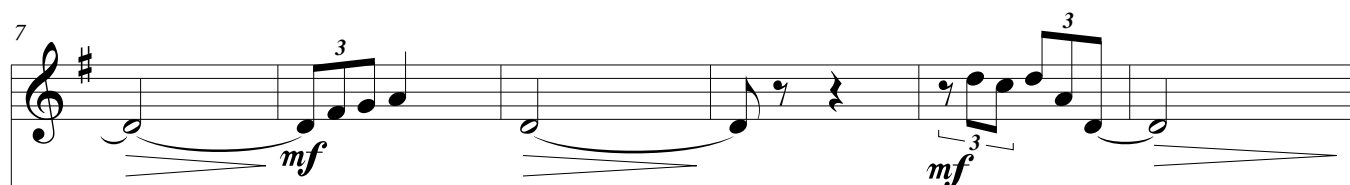
Trumpet in B $\flat$  1



Electric Bass



B $\flat$  Tpt. 1



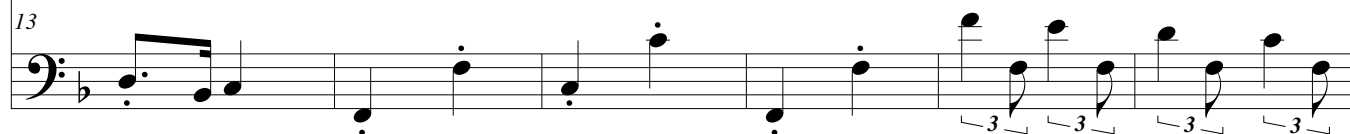
E.B.



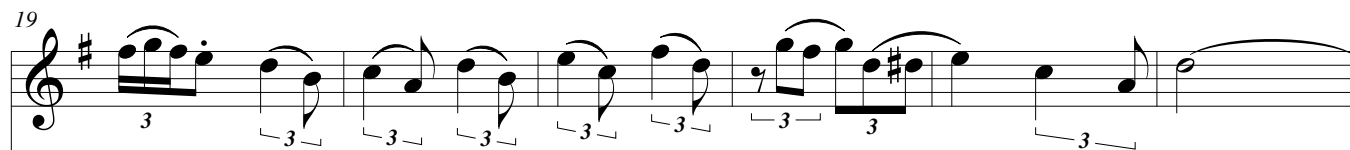
B $\flat$  Tpt. 1



E.B.



B $\flat$  Tpt. 1



E.B.



## Rondeau - Trifle in F Bb Trumpet 1 &amp; Bass

25

B $\flat$  Tpt. 1

25

E.B.

Fine

30

B $\flat$  Tpt. 1

30

E.B.

37

B $\flat$  Tpt. 1

37

E.B.

44

B $\flat$  Tpt. 1

44

E.B.