

# Latin Symphony #11 (I) in a

Tenor Trombone

(Chacona di Bossa Nova)(6'48'')

Michel Rondeau  
2005

Allegro (♩ = circa 120)

30 5

42

48

54

61

68

75

81

88

95

101

105

110

## Symphony #11 (I) in a

2  
117

123



131



138



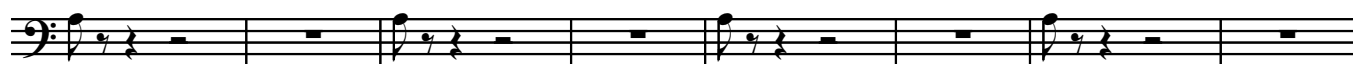
145



152



160



168



174



181



188



194

