

Nativity Suite(Latin)

for Soprano, Natural Trumpet & Harpsichord

Harpsichord

I-Resonet in Laudibus

Michael Praetorius

Arr. Michel Rondeau

1994.

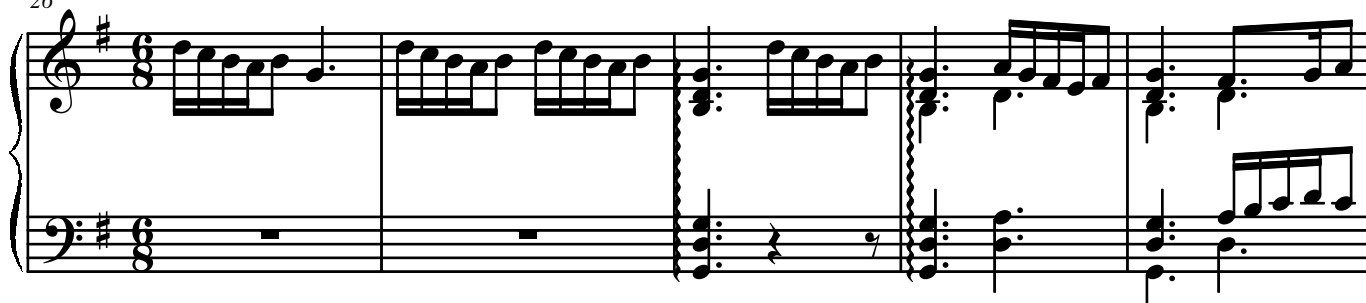
I-Allegro (♩. = circa 102)

7

13

20

26



31



37



43



50



57

Measures 57-62 of the Nativity Suite. The score is written for piano in G major. Measure 57 begins with a treble clef, a key signature of one sharp (F#), and a whole note chord of G4 and B4. A double bar line follows. From measure 58 to 62, the music is in 6/8 time. The treble staff features a melody of eighth notes: G4, A4, B4, A4, G4, F#4, E4, D4, C4, B3, A3, G3. The bass staff provides a harmonic accompaniment with eighth notes: G3, F#3, E3, D3, C3, B2, A2, G2, F#2, E2, D2, C2. A fermata is placed over the final G3 in measure 62.

63

Measures 63-68 of the Nativity Suite. The score continues in G major. Measures 63-65 are in 6/8 time. Measure 63 starts with a treble clef and a key signature of one sharp. The treble staff has a melody of eighth notes: G4, A4, B4, A4, G4, F#4, E4, D4, C4, B3, A3, G3. The bass staff has a harmonic accompaniment of eighth notes: G3, F#3, E3, D3, C3, B2, A2, G2, F#2, E2, D2, C2. A fermata is placed over the final G3 in measure 65. Measures 66-68 are in 2/4 time. The treble staff has a melody of quarter notes: G4, A4, B4, A4, G4, F#4, E4, D4, C4, B3, A3, G3. The bass staff has a harmonic accompaniment of quarter notes: G3, F#3, E3, D3, C3, B2, A2, G2, F#2, E2, D2, C2. A fermata is placed over the final G3 in measure 68.