

II- Ihr Kinderlein kommet

J.A.P.Schulz
(words) C.von Schmid
Arr. Michel Rondeau

Andante (♩ = circa 80)

Trumpet in D

Harpsichord

Soprano

D Tpt.

Hpschd.

S

Ihr Kin - der-lein, kom - met, O

2

II- Ihr Kinderlein kommet

11

D Tpt.



Hpschd.



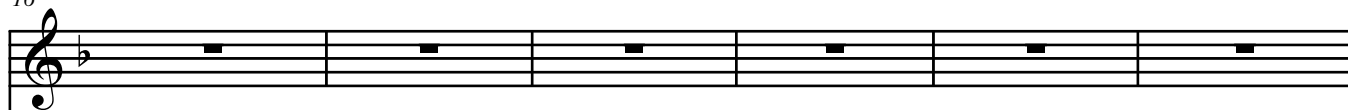
S



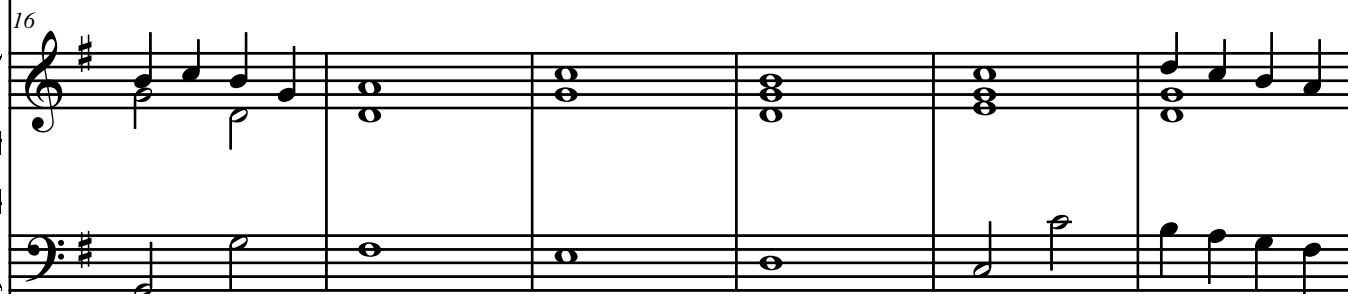
kom - met doch all! Zur Krip - pe her kom - met in Beth - le - hem's

16

D Tpt.



Hpschd.



S



Stall, und seht, was in die - ser hoch - hei - li - gen Nacht der Va - ter im

22

D Tpt.

Hpschd.

S

Him - mel fur Freu - de uns macht.

Detailed description: This block contains the first system of the musical score, measures 22 through 26. The D Tpt. part begins with rests for three measures, then plays a descending eighth-note scale in measure 25 and a half note in measure 26. The Hpschd. part consists of chords in the right hand and a bass line in the left hand. The Soprano part has a melodic line in measures 22-24 and rests in 25-26. The lyrics 'Him - mel fur Freu - de uns macht.' are written below the Soprano part.

27

D Tpt.

Hpschd.

S

Detailed description: This block contains the second system of the musical score, measures 27 through 31. The D Tpt. part has a continuous melodic line. The Hpschd. part consists of chords in the right hand and a bass line in the left hand. The Soprano part has rests for all five measures.

32

D Tpt.

Hpschd.

S

O seht _____ in der Krip - pe im nacht - li - chen

36

D Tpt.

Hpschd.

S

Stall, Seht hier _____ bei des Licht - leins hell - glanz - en - dem

40

D Tpt.

Hpschd.

S

Strahl, In rein - li - chen Win - deln das himm - lis - che Kind, Viel

Detailed description: This system contains measures 40 through 44. The D Tpt. part consists of whole rests in every measure. The Hpschd. part features a melodic line in the right hand, starting with an eighth-note pattern in measure 40 and then moving to chords, and a supporting line in the left hand with eighth and quarter notes. The S part has a vocal line with the lyrics: "Strahl, In rein - li - chen Win - deln das himm - lis - che Kind, Viel".

45

D Tpt.

Hpschd.

S

scho - ner und hold - er, als En - gel es sind.

Detailed description: This system contains measures 45 through 49. The D Tpt. part has whole rests in measures 45-47, followed by a melodic line in measures 48-49. The Hpschd. part has a complex accompaniment with many beamed eighth notes in the right hand and a more rhythmic line in the left hand. The S part has a vocal line with the lyrics: "scho - ner und hold - er, als En - gel es sind.".

6

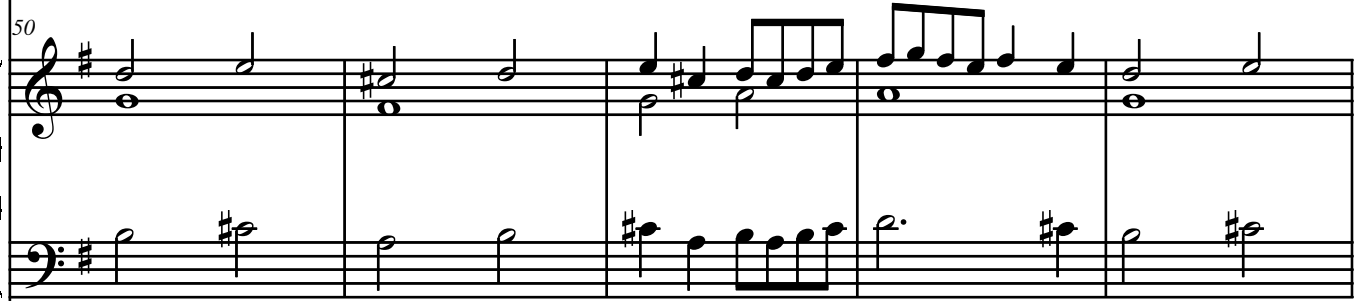
II- Ihr Kinderlein kommet

50

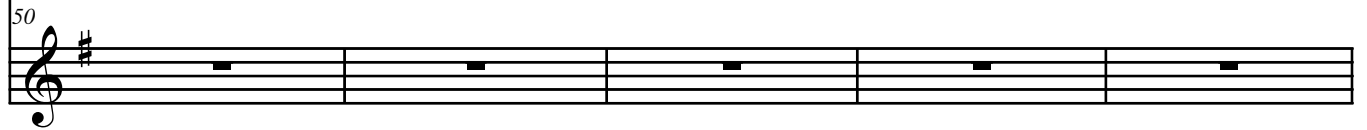
D Tpt.



Hpschd.



S

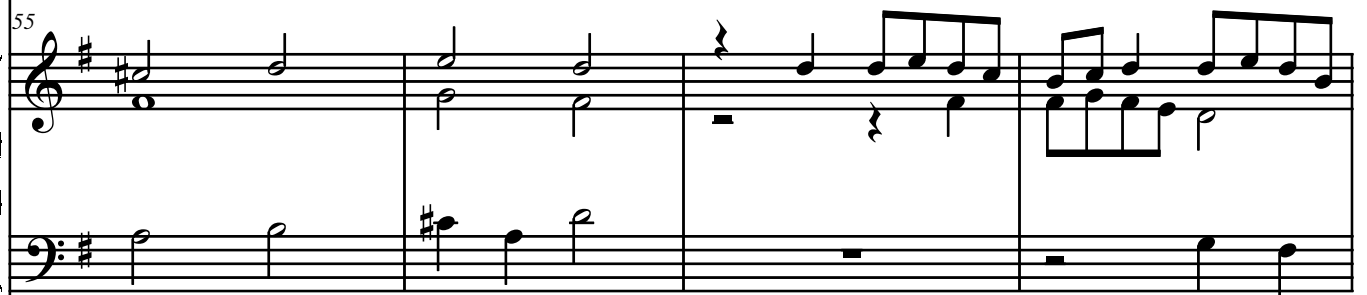


55

D Tpt.



Hpschd.



S



Da liegt es, ach Kin - der, auf

59

D Tpt.

Hpschd.

S

Heu — und auf Stroh, — Ma - ri - a — und Jo - sef bet -

63

D Tpt.

Hpschd.

S

rach - ten es — froh; — Die red - lich - en Hir - ten kni - en be - tend da -

68

D Tpt.

Hpschd.

S

vor, Hoch o - ben schwebt ju - belnd der En - gel - lein Chor. O

73

D Tpt.

Hpschd.

S

beugt, wie die Hir - ten, an - be - tend die Knie, Er - he - bet die

78

D Tpt.

Hpschd.

S

Hand - lein und dan - ket wie sie! Stimmt freu - dig Ihr —

82

D Tpt.

Hpschd.

S

Kin - der, wer sollt' — sich nicht freu'n? Stimmt freu - dig zum

86

D Tpt.

86

Hpschd.

86

S

Ju - bel der En - gel mit ein.