

# Fanfares of St Charbel

Played by the Cathedral Brass in the Ottawa St Charbel Church

Michel Rondeau  
October, 1995.

I-Processional (♩. = circa 65)

Trumpet in C 1

Trumpet in C 2

Musical notation for the first system, measures 1-6. The key signature is one flat (Bb) and the time signature is 3/4. The top staff (Trumpet in C 1) and bottom staff (Trumpet in C 2) both play the same melody. The melody consists of quarter notes, eighth notes, and a half note, with a repeat sign at the end of measure 6.

C Tpt. 1

C Tpt. 2

Musical notation for the second system, measures 7-13. The key signature is one flat (Bb) and the time signature is 3/4. The top staff (C Tpt. 1) and bottom staff (C Tpt. 2) both play the same melody. The melody consists of quarter notes, eighth notes, and a half note, with a repeat sign at the end of measure 13.

C Tpt. 1

C Tpt. 2

Musical notation for the third system, measures 14-21. The key signature is one flat (Bb) and the time signature is 3/4. The top staff (C Tpt. 1) and bottom staff (C Tpt. 2) both play the same melody. The melody consists of quarter notes, eighth notes, and a half note, with a repeat sign at the end of measure 21.

C Tpt. 1

C Tpt. 2

Musical notation for the fourth system, measures 22-28. The key signature is one flat (Bb) and the time signature is 3/4. The top staff (C Tpt. 1) and bottom staff (C Tpt. 2) both play the same melody. The melody consists of quarter notes, eighth notes, and a half note, with a repeat sign at the end of measure 28.

2  
30 **II-Recessional** (♩ = circa 60) **Fanfares of St Charbel**

C Tpt. 1



C Tpt. 2



C Tpt. 1



C Tpt. 2



38 **Faster** (♩ = circa 75)

C Tpt. 1



C Tpt. 2



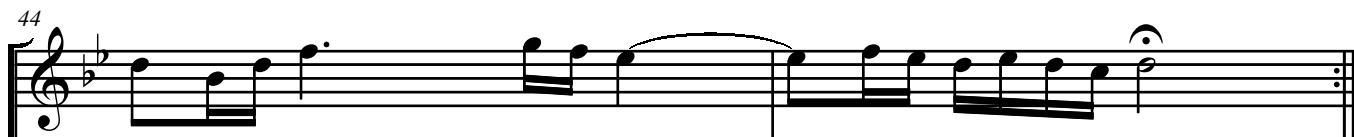
C Tpt. 1



C Tpt. 2



C Tpt. 1



C Tpt. 2

