

III - Corrente

Bertin Quentin (16??-1767)

Arr. Michel Rondeau

Allegro (♩ = circa 120)

Trumpet in C

Violin I

Violin II

Viola

Cello

Double Bass

Harpsichord

C Tpt.



Vln. I



Vln. II



Vla.



Vc.



D.B.



Hpschd.



3

[illegible]

C Tpt.

Vln. I

Vln. II

Vla.

Vc.

D.B.

Hpschd.

This musical score page contains measures 16 through 21 of the piece 'III - Corrente'. The score is written for six instruments: C Trumpet, Violin I, Violin II, Viola, Violoncello, Double Bass, and Harpsichord. The key signature has one flat (B-flat), and the time signature is 4/4. Measure 16 begins with a rehearsal mark. The C Trumpet part features a melodic line with eighth and sixteenth notes. The Violin I and II parts provide harmonic support with a mix of eighth and sixteenth notes. The Viola, Violoncello, and Double Bass parts play a steady eighth-note accompaniment. The Harpsichord part consists of chords and moving lines in both staves. The score concludes with a double bar line at the end of measure 21.

22

C Tpt.

Vln. I

Vln. II

Vla.

Vc.

D.B.

Hpschd.

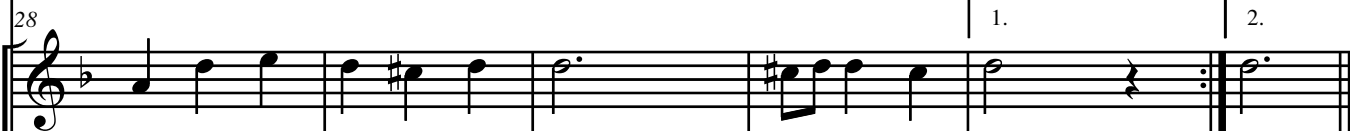
22

22

C Tpt.



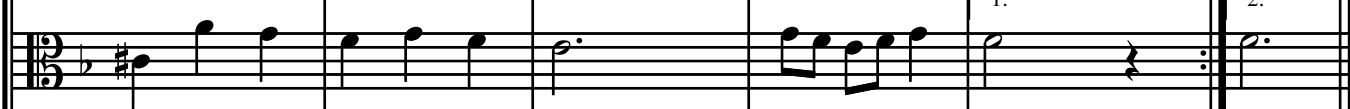
Vln. I



Vln. II



Vla.



Vc.



D.B.



Hpschd.

