

Balletto a 6

Entree

Alessandro de Poglietti (16xx-1683)

Measures 1-15 of the Balletto a 6, Entree. The music is written in treble clef, common time (C), and features a key signature of one flat (B-flat). The score includes various musical notations such as eighth notes, sixteenth notes, and rests. Trills (tr) are indicated above specific notes in measures 1, 3, and 7. Measure numbers 4, 8, and 12 are placed at the beginning of their respective staves.

Gavotte

Measures 19-27 of the Gavotte. The music is written in treble clef, common time (C), and features a key signature of one flat (B-flat). The score includes various musical notations such as eighth notes, sixteenth notes, and rests. Trills (tr) are indicated above specific notes in measures 25 and 27. Measure numbers 19, 23, and 27 are placed at the beginning of their respective staves. The piece concludes with a double bar line and a 3/4 time signature change.

Amener



Allemande



Courente

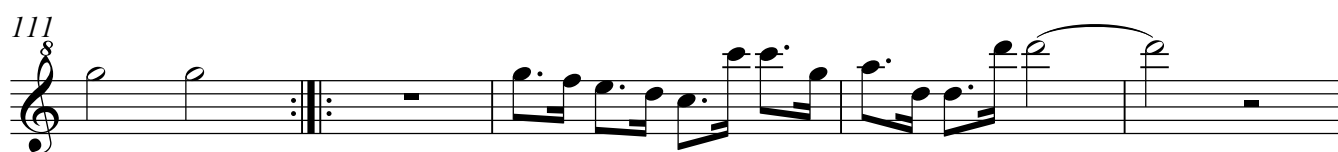




Sarabande



Gigue



Gavotte



Cadenza

