

Cembalo

Johann Pfeiffer (1697 - 1761)

Concerto

This page contains a single system of musical notation for a bass line in G major. The notation includes numbered fingering (1-7) and various musical notations such as slurs, ties, and dynamic markings like 'forte' and 'piano'. The system is divided into measures by bar lines, with some measures containing multiple notes and others being rests. The key signature is one sharp (F#), and the time signature is common time (C).

Andante

11

6 7 9 8 6 7 9 8 7 6 5 6

4 3 # 4 3 3 4 3 4

17

3 5 7 6 6 5 6

5 4 3

9

piano 6

31

7 # 6 7 6 7 6 7 6 7 6 6 #

5 4 # 5 4 3

42

forte 6 7 6 6 7 6 6 7 7 6 # 7 6 # 4

48

5 6 5 5 7 6 5

4 # 4 5 4

Allegro

6 5 6 6 6 7

8

7 6 5 4 6 5 6 6

15

6 7 7 5 7 5 6

23

30

5 6

58

5 6 # 5 # # 8 7

#

65



74



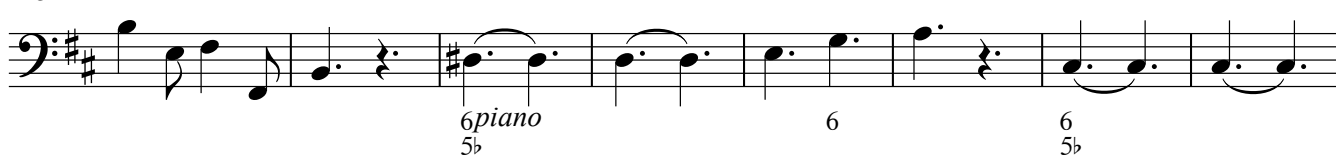
81



99



113



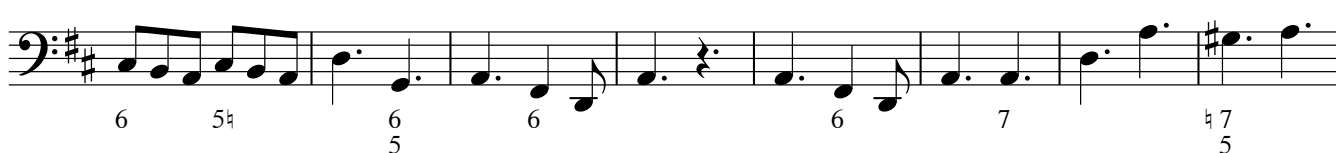
121



127



148



156



161

