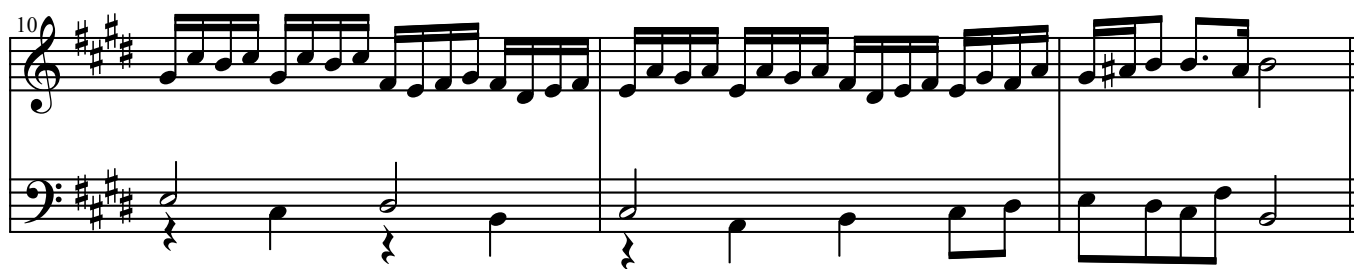
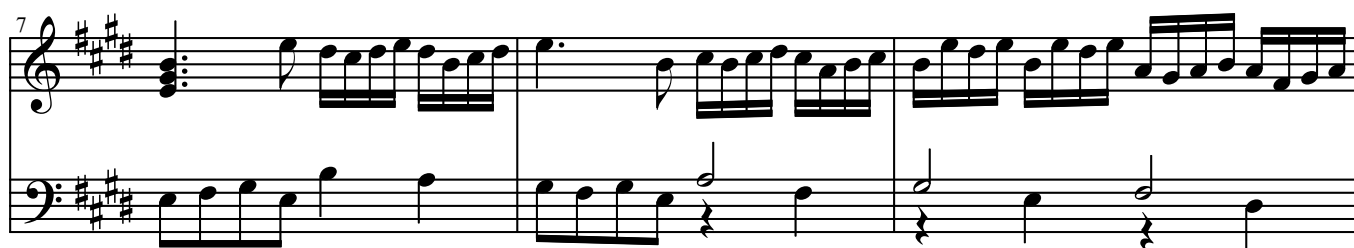
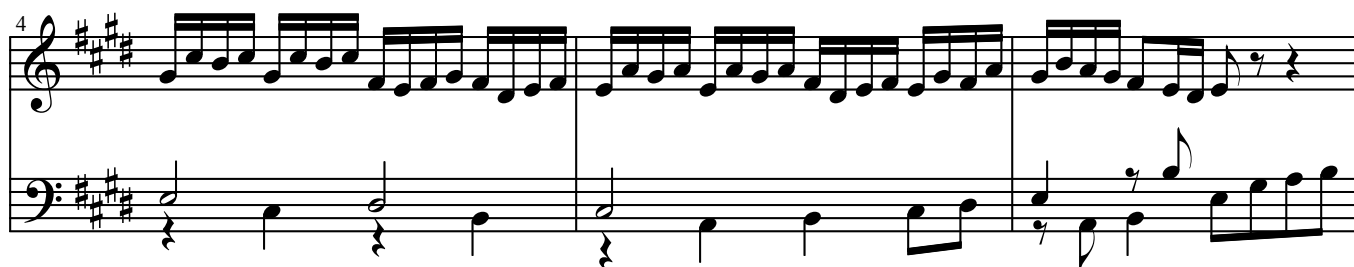
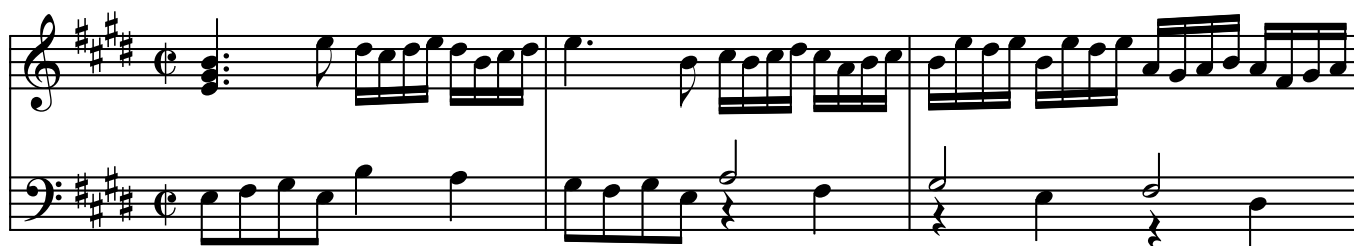


ARIA

(E maj.)

Petrus Paepen
(1662-1717)



16

Measures 16-18 of a musical score in A major (three sharps). Measure 16 features a treble staff with a continuous eighth-note melody and a bass staff with a simple eighth-note accompaniment. A fermata is placed over the final eighth note of the treble staff. Measure 17 continues the treble melody and adds a more active bass line. Measure 18 shows a change in the bass line, with the treble staff having a half rest.

19

Measures 19-21 of the musical score. Measure 19 has a treble staff with a melody featuring a fermata on the first note and a bass staff with a steady eighth-note accompaniment. Measure 20 continues the treble melody and the bass line. Measure 21 features a treble staff with a continuous eighth-note melody and a bass staff with a half note accompaniment.

22

Measures 22-24 of the musical score. Measure 22 has a treble staff with a continuous eighth-note melody and a bass staff with a half note accompaniment. Measure 23 continues the treble melody and the bass line. Measure 24 features a treble staff with a continuous eighth-note melody and a bass staff with a half note accompaniment.

25

Measures 25-27 of the musical score. Measure 25 has a treble staff with a continuous eighth-note melody and a bass staff with a half note accompaniment. Measure 26 continues the treble melody and the bass line. Measure 27 features a treble staff with a continuous eighth-note melody and a bass staff with a half note accompaniment, ending with a double bar line.