

Paulchens Schlaflied

I.

Ulrich Nehls, 2003

$\text{♩} = 90$

Piano

Measures 1-5 of the piano introduction. The key signature has one sharp (F#). The tempo is marked as quarter note = 90.

6

1.

Measures 6-9. First ending bracket over measures 8 and 9.

10

2.

Measures 10-13. Second ending bracket over measures 12 and 13.

14

Measures 14-17.

18

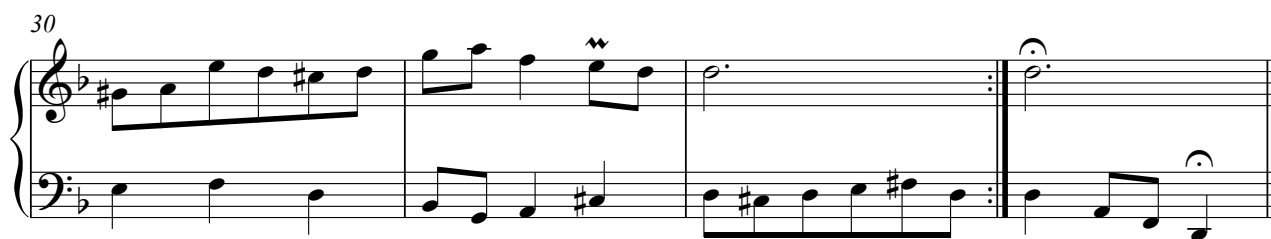
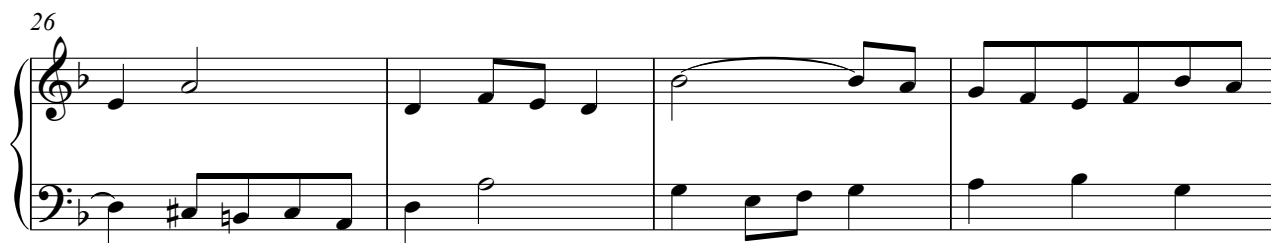
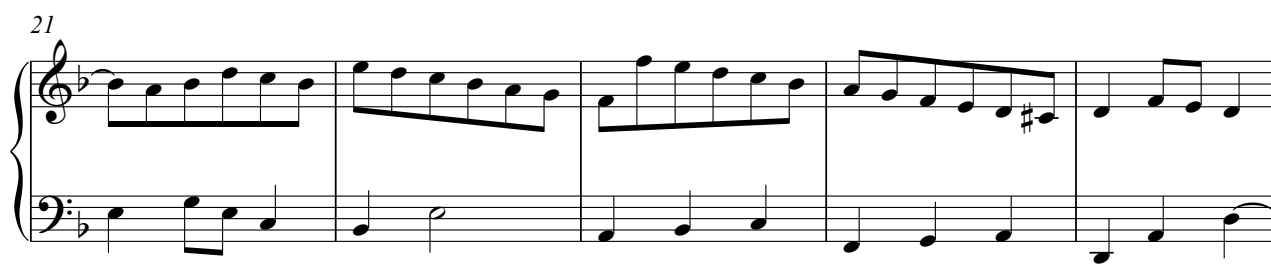
Measures 18-21.

22

1.

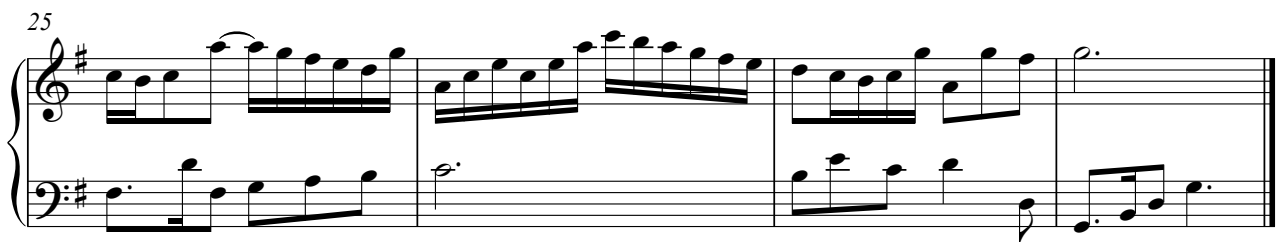
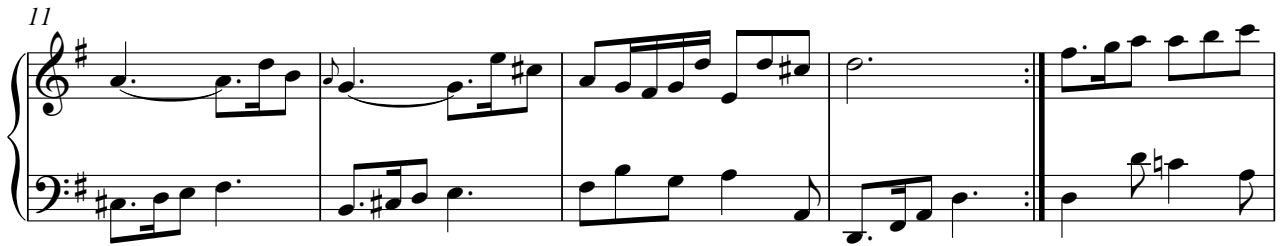
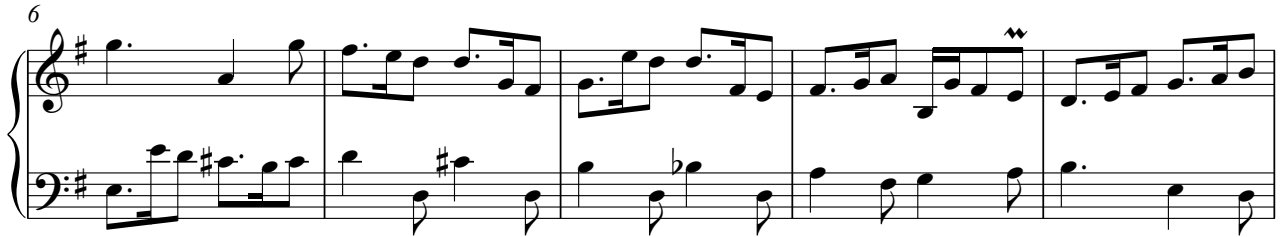
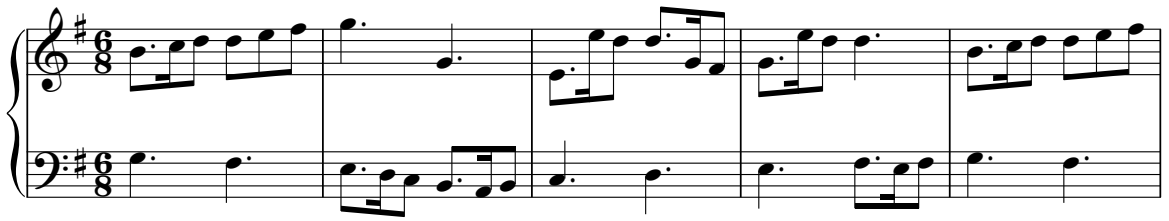
2.

Measures 22-25. First ending bracket over measures 24 and 25. Second ending bracket over measures 26 and 27.

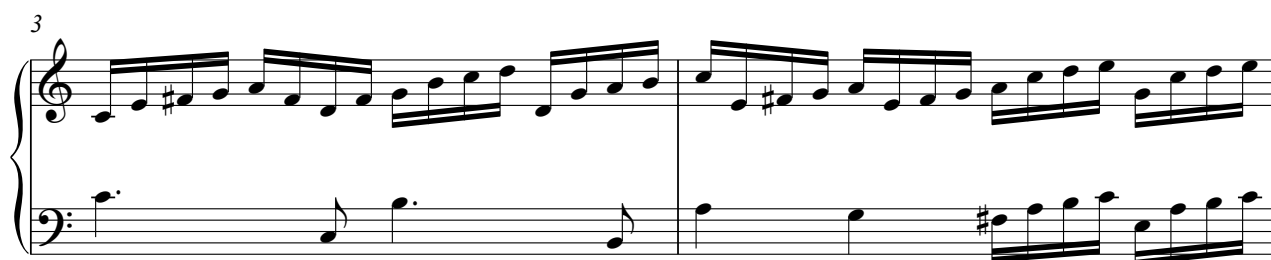


$\text{♩} = 120$

III.



IV.

 $\text{♩} = 90$ 

12

Measures 12 and 13 of a piano piece. Measure 12 features a treble staff with a half note G4, a quarter rest, a half note A4, a quarter rest, a half note B4, and a quarter rest. The bass staff has a continuous eighth-note accompaniment. Measure 13 continues the treble staff with a half note C5, a quarter note D5, a half note E5, and a quarter note F5. The bass staff continues with eighth notes, including a sharp sign on the second measure.

14

Measures 14 and 15. Measure 14 has a treble staff with a continuous eighth-note line starting on G4 and a bass staff with a half note G3, a quarter note A3, a half note B3, and a quarter note C4. Measure 15 continues the treble staff and has a bass staff with a half note D3, a quarter note E3, a half note F3, and a quarter note G3.

16

Measures 16 and 17. Measure 16 features a treble staff with a continuous eighth-note line and a bass staff with a half note G2, a quarter note A2, a half note B2, and a quarter note C3. Measure 17 continues the treble staff and has a bass staff with a half note D2, a quarter note E2, a half note F2, and a quarter note G2.

18

Measures 18 and 19. Measure 18 has a treble staff with a continuous eighth-note line and a bass staff with a half note G2, a quarter note A2, a half note B2, and a quarter note C3. Measure 19 continues the treble staff and has a bass staff with a half note D2, a quarter note E2, a half note F2, and a quarter note G2.

20

Measures 20, 21, and 22. Measure 20 has a treble staff with a continuous eighth-note line and a bass staff with a half note G2, a quarter note A2, a half note B2, and a quarter note C3. Measure 21 continues the treble staff and has a bass staff with a half note D2, a quarter note E2, a half note F2, and a quarter note G2. Measure 22 features a treble staff with a half note G4, a quarter note A4, a half note B4, and a quarter note C5, and a bass staff with a half note D3, a quarter note E3, a half note F3, and a quarter note G3.