

Tenor Sax 1

WIE SOLL ICH DICH EMPFANGEN

♩ = 78

♩ = 120

11

7



23



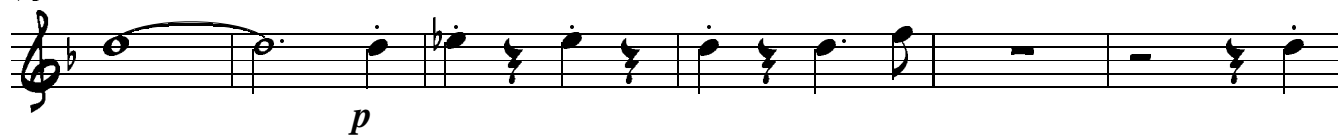
28



33



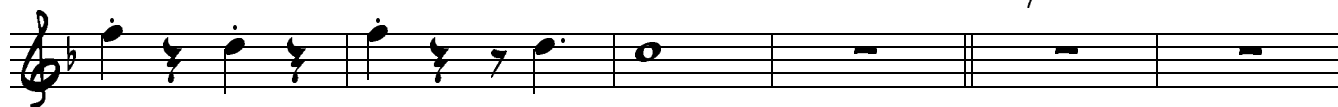
40



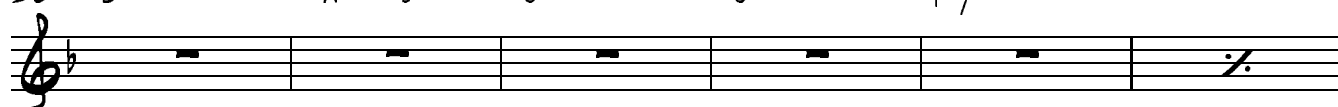
46



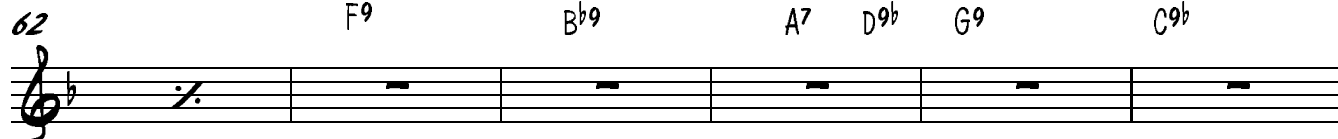
50



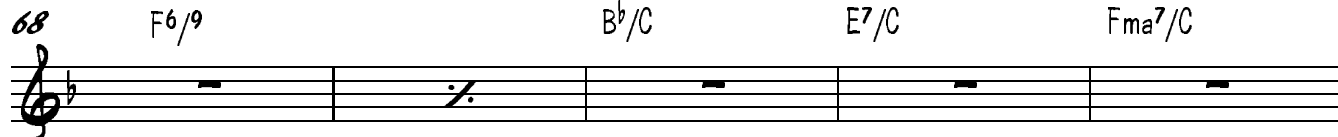
56



62



68



Tenor Sax 1

2 73 G#9/C Bbmaj7/C F9 Gmi7 G7

78 C13 F7 Eb9 D9b Gmi7

83 F9# Gmi7 Bb/C Fma9 End Solo mf

88 3

96 3 pp

104 p

111

116

121 p