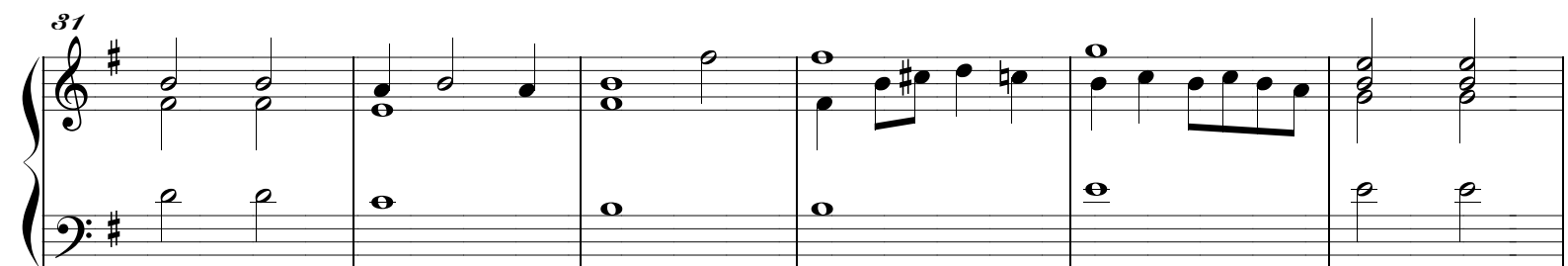
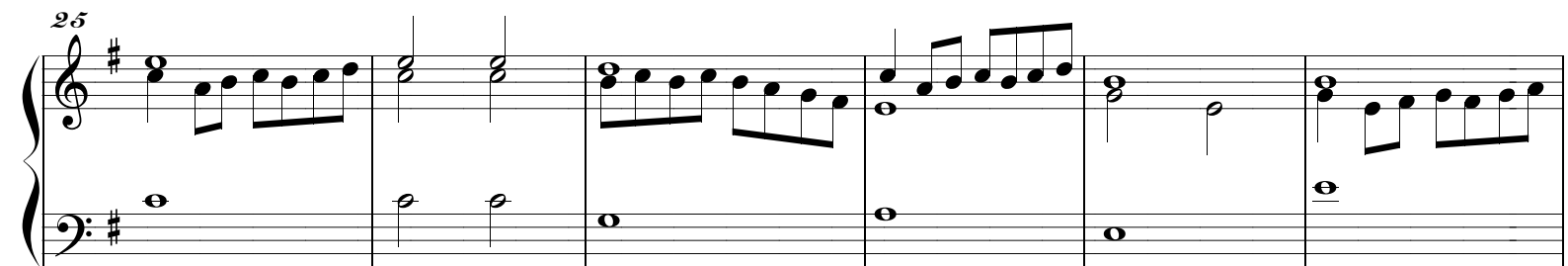
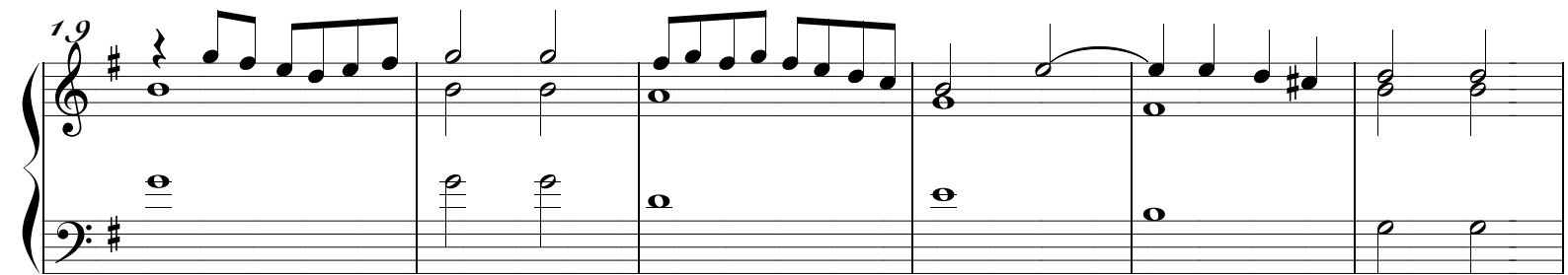
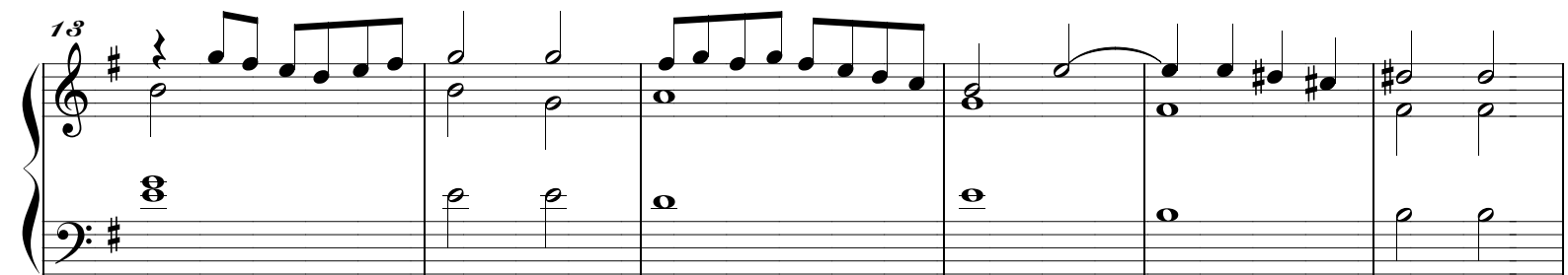
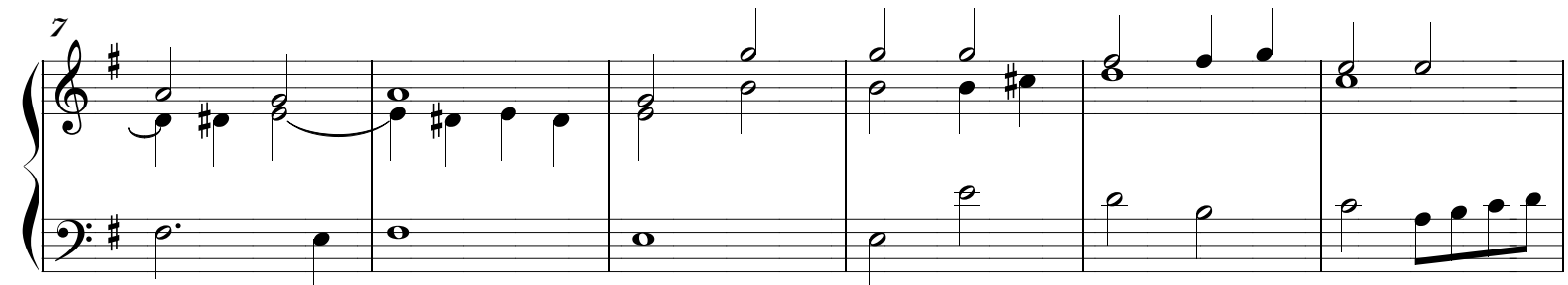
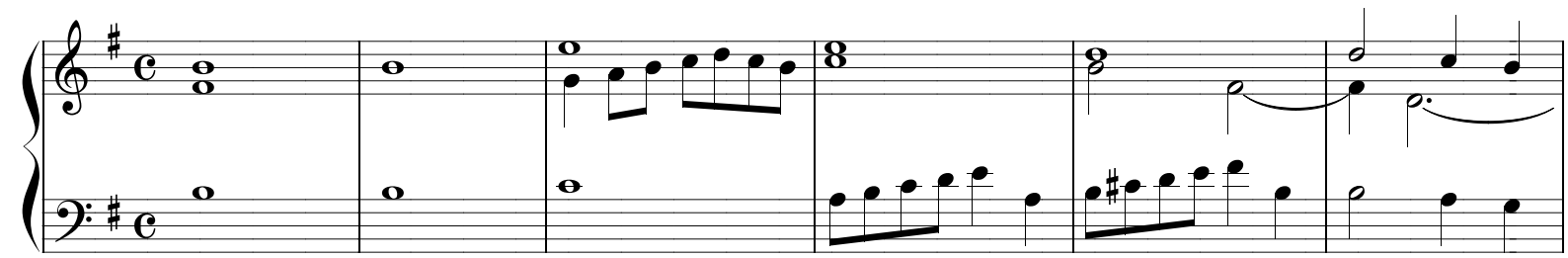


Canción del Emperador

Luis de Narváez (c. 1500–c. 1550)



37

System 1 (measures 37-42): Treble clef, key of D major. Measures 37-38: Treble has a whole note chord (F#4, A4, C#5) with a slur; Bass has a whole note D3. Measure 39: Treble has an eighth-note triplet (D4, E4, F#4) followed by a quarter note G4; Bass has a whole rest. Measure 40: Treble has a half note F#4; Bass has a whole rest. Measure 41: Treble has a half note E4; Bass has a whole rest. Measure 42: Treble has a whole note chord (F#4, A4, C#5); Bass has a whole note D3.

43

System 2 (measures 43-48): Treble clef, key of D major. Measure 43: Treble has an eighth-note triplet (D4, E4, F#4) followed by a quarter note G4; Bass has a whole note chord (F#3, A3, C#4) with a slur. Measure 44: Treble has a half note F#4; Bass has a whole note chord (F#3, A3, C#4). Measure 45: Treble has a half note E4; Bass has a whole note chord (F#3, A3, C#4). Measure 46: Treble has a half note D4; Bass has a whole note chord (F#3, A3, C#4). Measure 47: Treble has a half note C#4; Bass has a whole note chord (F#3, A3, C#4). Measure 48: Treble has a whole note chord (F#4, A4, C#5); Bass has a whole note D3.

50

System 3 (measures 50-55): Treble clef, key of D major. Measure 50: Treble has a whole note chord (F#4, A4, C#5); Bass has a whole note D3. Measure 51: Treble has a whole note chord (F#4, A4, C#5); Bass has a whole note D3. Measure 52: Treble has a whole note chord (F#4, A4, C#5); Bass has a whole note D3. Measure 53: Treble has a whole note chord (F#4, A4, C#5); Bass has a whole note D3. Measure 54: Treble has a whole note chord (F#4, A4, C#5); Bass has a whole note D3. Measure 55: Treble has a whole note chord (F#4, A4, C#5); Bass has a whole note D3.

56

System 4 (measures 56-61): Treble clef, key of D major. Measure 56: Treble has an eighth-note triplet (D4, E4, F#4) followed by a quarter note G4; Bass has a whole note chord (F#3, A3, C#4). Measure 57: Treble has a half note F#4; Bass has a whole rest. Measure 58: Treble has an eighth-note triplet (D4, E4, F#4) followed by a quarter note G4; Bass has a whole note chord (F#3, A3, C#4). Measure 59: Treble has a half note F#4; Bass has a whole note chord (F#3, A3, C#4). Measure 60: Treble has a half note E4; Bass has a whole note chord (F#3, A3, C#4). Measure 61: Treble has a half note D4; Bass has a whole note chord (F#3, A3, C#4).

62

System 5 (measures 62-67): Treble clef, key of D major. Measure 62: Treble has an eighth-note triplet (D4, E4, F#4) followed by a quarter note G4; Bass has a whole note chord (F#3, A3, C#4). Measure 63: Treble has a half note F#4; Bass has a whole note chord (F#3, A3, C#4). Measure 64: Treble has a half note E4; Bass has a whole note chord (F#3, A3, C#4). Measure 65: Treble has a half note D4; Bass has a whole note chord (F#3, A3, C#4). Measure 66: Treble has a half note C#4; Bass has a whole note chord (F#3, A3, C#4). Measure 67: Treble has a whole note chord (F#4, A4, C#5); Bass has a whole note D3.

68

System 6 (measures 68-73): Treble clef, key of D major. Measure 68: Treble has a whole note chord (F#4, A4, C#5); Bass has a whole note D3. Measure 69: Treble has a whole note chord (F#4, A4, C#5); Bass has a whole note D3. Measure 70: Treble has a whole note chord (F#4, A4, C#5); Bass has a whole note D3. Measure 71: Treble has a whole note chord (F#4, A4, C#5); Bass has a whole note D3. Measure 72: Treble has a whole note chord (F#4, A4, C#5); Bass has a whole note D3. Measure 73: Treble has a whole note chord (F#4, A4, C#5); Bass has a whole note D3.

74

System 7 (measures 74-79): Treble clef, key of D major. Measure 74: Treble has an eighth-note triplet (D4, E4, F#4) followed by a quarter note G4; Bass has a whole note chord (F#3, A3, C#4). Measure 75: Treble has a half note F#4; Bass has a whole note chord (F#3, A3, C#4). Measure 76: Treble has a half note E4; Bass has a whole note chord (F#3, A3, C#4). Measure 77: Treble has a half note D4; Bass has a whole note chord (F#3, A3, C#4). Measure 78: Treble has a half note C#4; Bass has a whole note chord (F#3, A3, C#4). Measure 79: Treble has a whole note chord (F#4, A4, C#5); Bass has a whole note D3.