

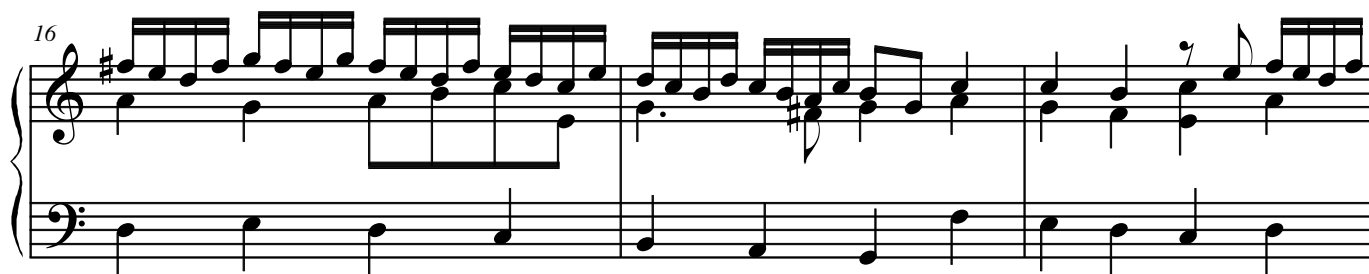
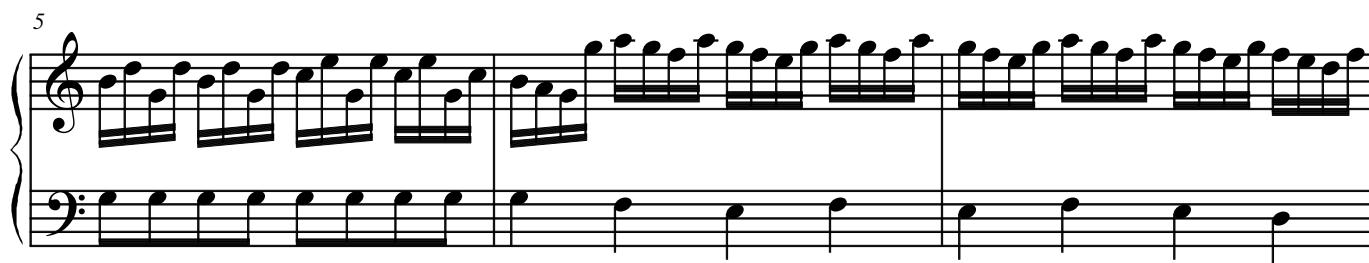
Organ

III

Francesco Onofrio Manfredini (1684-1762)

Arr. Michel Rondeau

Allegro (♩ = circa 120)



19

22

26

29

32

35

III

3

39

Measures 39-42 of a musical score. The piece is in 3/4 time. Measure 39 features a treble staff with a series of chords and a bass staff with a steady eighth-note accompaniment. Measure 40 continues the chordal texture in the treble and the eighth-note pattern in the bass. Measure 41 shows a change in the treble staff with more complex chordal figures, while the bass staff maintains the eighth-note accompaniment. Measure 42 concludes the system with a final chord in the treble and a half-note in the bass.

43

Measures 43-46 of a musical score. Measure 43 introduces a rapid sixteenth-note melody in the treble staff, supported by a steady eighth-note bass line. Measure 44 continues this melodic pattern. Measure 45 features a melodic phrase in the treble that ends with a half-note, while the bass staff continues with eighth notes. Measure 46 shows a continuation of the eighth-note bass line and a final melodic figure in the treble.

47

Measures 47-50 of a musical score. Measure 47 continues the sixteenth-note melody in the treble and the eighth-note bass line. Measure 48 features a melodic phrase in the treble that ends with a half-note, while the bass staff continues with eighth notes. Measure 49 shows a continuation of the eighth-note bass line and a final melodic figure in the treble. Measure 50 concludes the system with a final chord in the treble and a half-note in the bass.

50

Measures 51-53 of a musical score. Measure 51 features a melodic phrase in the treble that ends with a half-note, while the bass staff continues with eighth notes. Measure 52 shows a continuation of the eighth-note bass line and a final melodic figure in the treble. Measure 53 concludes the system with a final chord in the treble and a half-note in the bass.

53

Measures 54-56 of a musical score. Measure 54 features a melodic phrase in the treble that ends with a half-note, while the bass staff continues with eighth notes. Measure 55 shows a continuation of the eighth-note bass line and a final melodic figure in the treble. Measure 56 concludes the system with a final chord in the treble and a half-note in the bass. The word "rit." is written below the bass staff in measures 55 and 56, indicating a ritardando.