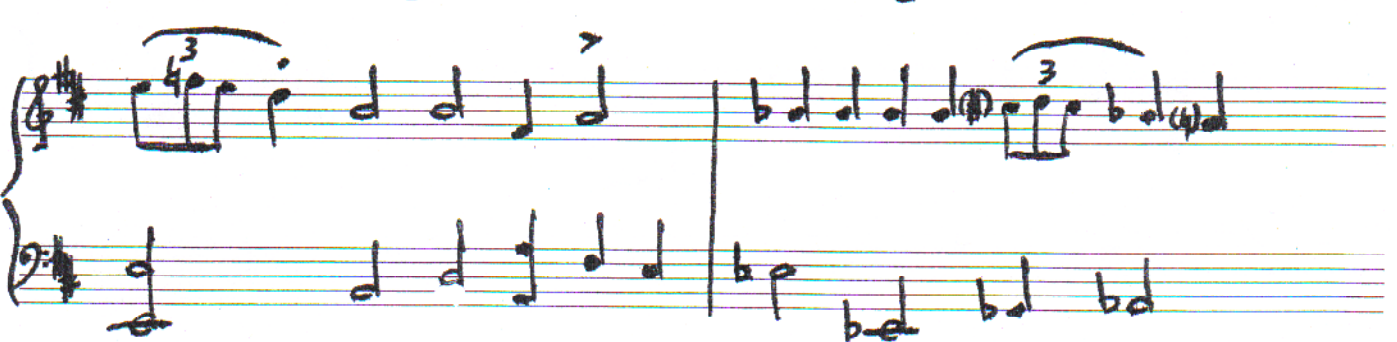
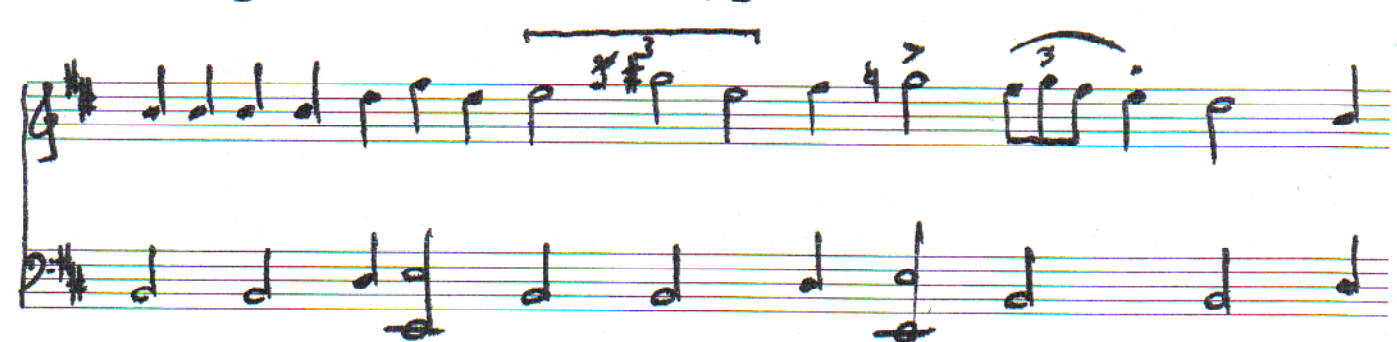
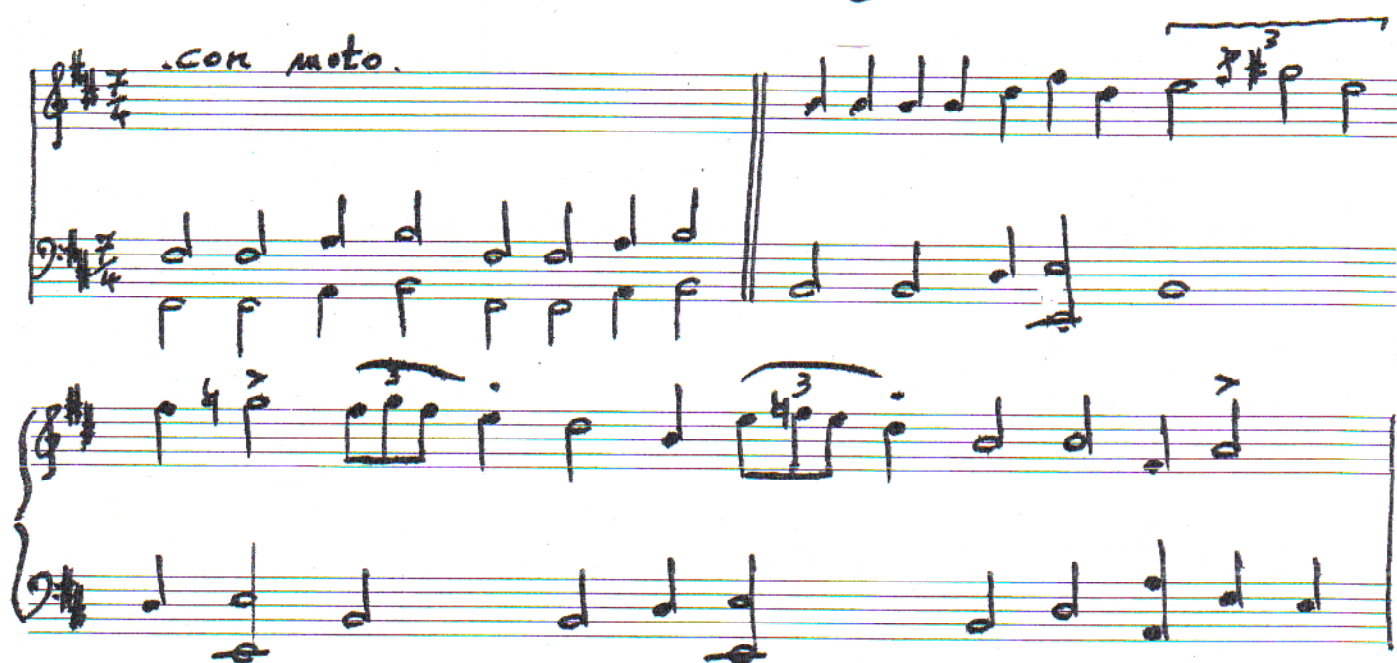
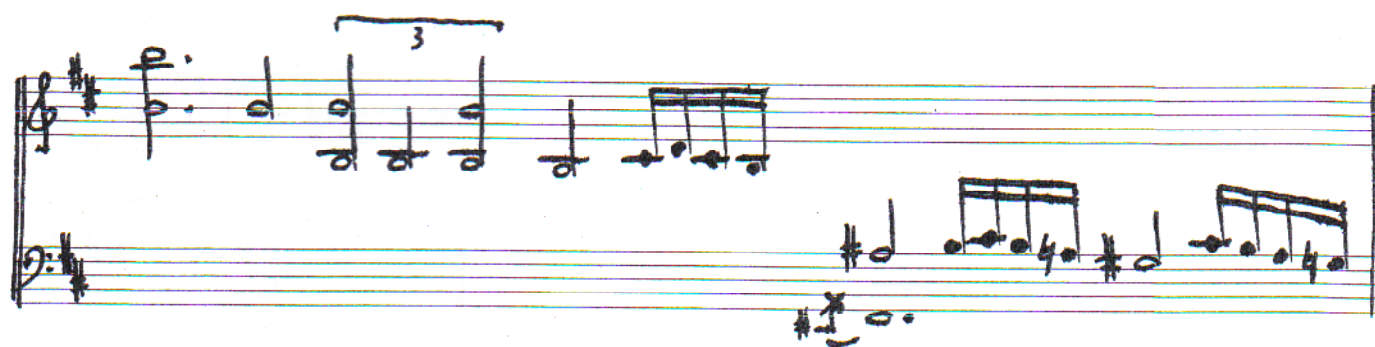
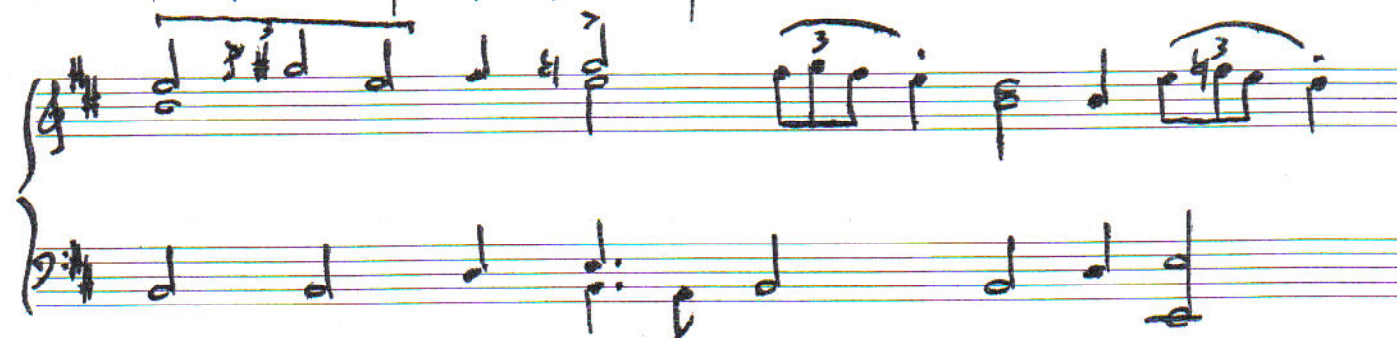
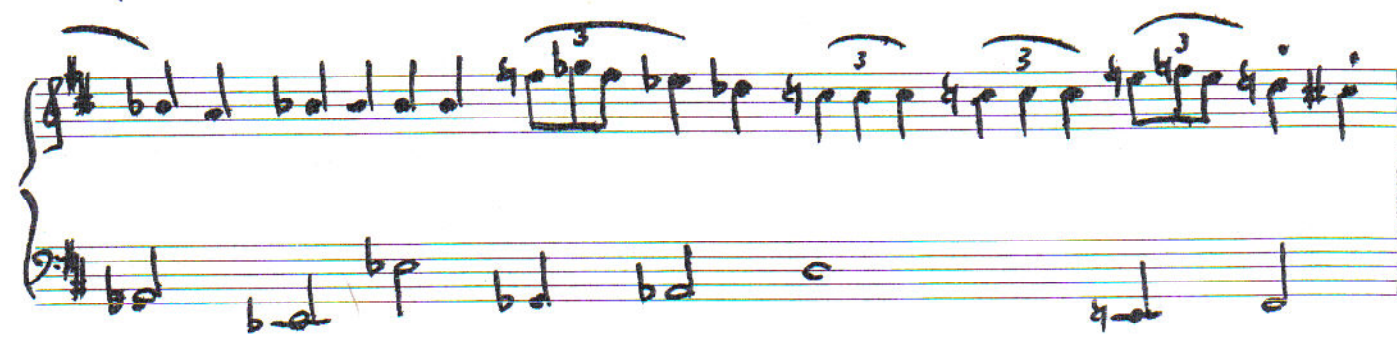
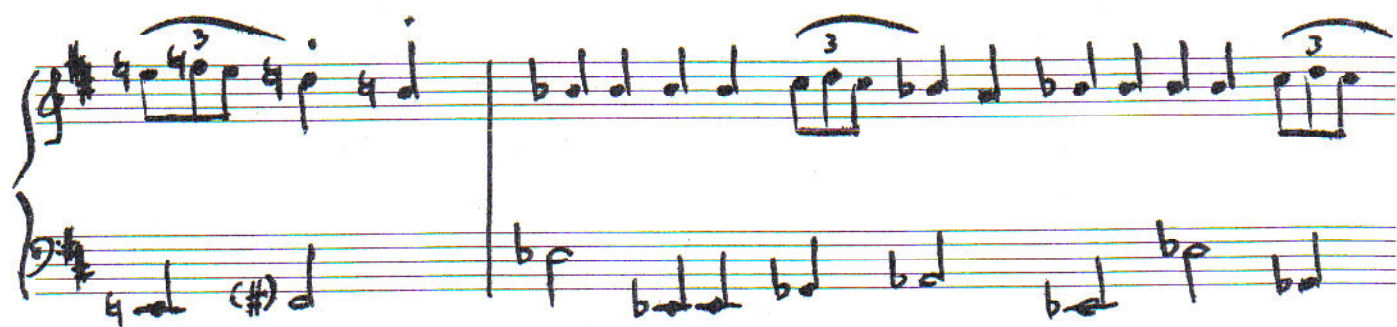
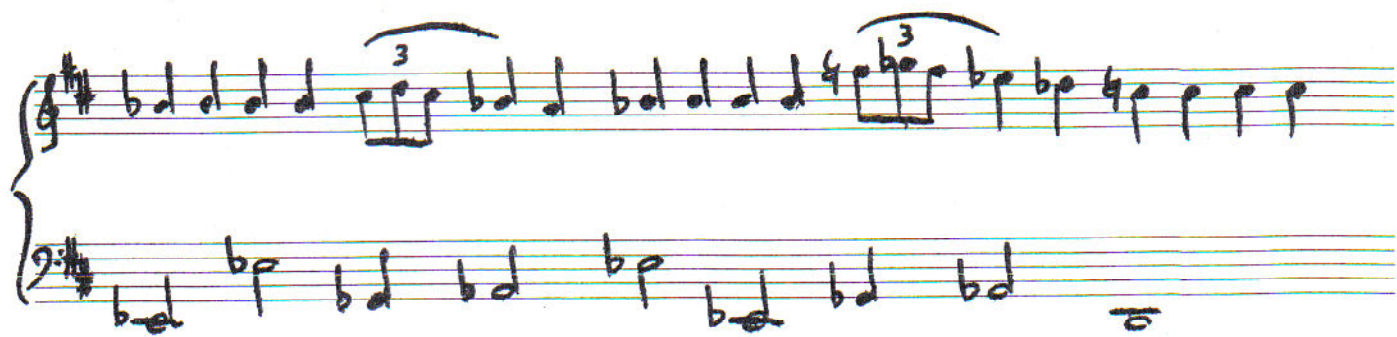


# Regentagentagstoccata.







Handwritten musical notation, first system. Treble and bass staves. Key signature: one sharp (F#). The system concludes with a double bar line and a repeat sign.

Handwritten musical notation, second system. Treble and bass staves. Features triplets and a trill (tr) in the bass staff.

Handwritten musical notation, third system. Treble and bass staves. Features triplets and a trill (tr) in the bass staff.

Handwritten musical notation, fourth system. Treble and bass staves. Features triplets and a trill (tr) in the bass staff.

Handwritten musical notation, fifth system. Treble and bass staves. Features triplets and a trill (tr) in the bass staff.

Handwritten musical notation, sixth system. Treble and bass staves. Features triplets and a trill (tr) in the bass staff.



Handwritten musical score for piano, consisting of six systems of staves. The notation is in treble and bass clefs, with a key signature of one sharp (F#). The score includes various musical notations such as notes, rests, trills, and triplets.

The first system shows a melody in the treble clef and a bass line in the bass clef. The second system features a trill in the treble clef. The third system continues the melody and bass line. The fourth system includes a triplet in the treble clef. The fifth system shows a triplet in the treble clef. The sixth system concludes the piece with a final melody and bass line.



Handwritten musical notation, first system. Treble clef, key signature of two sharps (F# and C#), 4/4 time. Bass clef, key signature of two sharps (F# and C#), 4/4 time. The melody in the treble clef starts with a quarter note, followed by eighth notes, and includes a trill. The bass line consists of quarter notes and half notes.

Handwritten musical notation, second system. Treble clef, key signature of two sharps (F# and C#), 4/4 time. Bass clef, key signature of two sharps (F# and C#), 4/4 time. The melody in the treble clef features a trill and quarter notes. The bass line includes a triplet of eighth notes and quarter notes.

Handwritten musical notation, third system. Treble clef, key signature of two sharps (F# and C#), 5/4 time. Bass clef, key signature of two sharps (F# and C#), 5/4 time. The melody in the treble clef includes a 5/4 time signature change and quarter notes. The bass line also includes a 5/4 time signature change and quarter notes.

Handwritten musical notation, fourth system. Treble clef, key signature of two sharps (F# and C#), 5/4 time. Bass clef, key signature of two sharps (F# and C#), 5/4 time. The melody in the treble clef features a triplet of eighth notes and quarter notes. The bass line includes a 5/4 time signature change and quarter notes.

Handwritten musical notation, fifth system. Treble clef, key signature of two sharps (F# and C#), 4/4 time. Bass clef, key signature of two sharps (F# and C#), 4/4 time. The melody in the treble clef includes a triplet of eighth notes and quarter notes. The bass line features a triplet of eighth notes and quarter notes.

Handwritten musical notation, sixth system. Treble clef, key signature of two sharps (F# and C#), 4/4 time. Bass clef, key signature of two sharps (F# and C#), 4/4 time. The melody in the treble clef includes a triplet of eighth notes and quarter notes. The bass line features a triplet of eighth notes and quarter notes.



This image shows a handwritten musical score for guitar and bass, consisting of nine systems of staves. The notation is written in ink on a white background. The first system (measures 1-4) is in G major (one sharp) and 4/4 time. The guitar part features a triplet of eighth notes in measure 2 and trills in measures 3 and 4. The bass part has a triplet of eighth notes in measure 4. The second system (measures 5-8) continues the melody and bass line. The third system (measures 9-12) introduces a key change to D minor (two flats) and a time signature change to 5/4 in measure 10. The fourth system (measures 13-16) continues in 5/4 time. The fifth system (measures 17-20) changes to 7/4 time in measure 17. The sixth system (measures 21-24) continues in 7/4 time. The seventh system (measures 25-28) features a double bar line and a key change to D major (two sharps) in measure 27. The eighth system (measures 29-32) continues in D major, with a triplet of eighth notes in measure 30. The ninth system (measures 33-36) concludes the piece with a final chord in measure 36.



This is a handwritten musical score for piano, consisting of 10 systems of staves. The notation is written in ink on a grid of five-line staves. The key signature is one sharp (F#), and the time signature is 4/4. The score includes various musical markings such as notes, rests, accidentals, and dynamic markings. The first system features a triplet of eighth notes in the right hand and a series of eighth notes in the left hand. The second system continues the melodic line in the right hand with a triplet and a fermata, while the left hand plays a steady eighth-note accompaniment. The third system introduces a change in the left hand's accompaniment with a triplet of eighth notes. The fourth system shows a more complex right-hand melody with a triplet and a fermata, and a left hand with a triplet of eighth notes. The fifth system features a right-hand melody with a triplet and a fermata, and a left hand with a triplet of eighth notes. The sixth system continues the melodic line in the right hand with a triplet and a fermata, and a left hand with a triplet of eighth notes. The seventh system shows a right-hand melody with a triplet and a fermata, and a left hand with a triplet of eighth notes. The eighth system features a right-hand melody with a triplet and a fermata, and a left hand with a triplet of eighth notes. The ninth system continues the melodic line in the right hand with a triplet and a fermata, and a left hand with a triplet of eighth notes. The tenth system shows a right-hand melody with a triplet and a fermata, and a left hand with a triplet of eighth notes.



Handwritten musical notation for the first system, featuring piano and bass staves with treble and bass clefs, a key signature of one sharp (F#), and a 4/4 time signature. The piano part includes triplets and slurs. The bass part has a whole note and two half notes with accidentals.

Handwritten musical notation for the second system, continuing the piano and bass staves. The piano part features eighth and sixteenth notes with slurs. The bass part has half notes and a whole note.

Handwritten musical notation for the third system, showing a change in tempo with the instruction "(poco ritard.)" written above the bass staff. The piano part has eighth notes, and the bass part has half notes.

Handwritten musical notation for the fourth system, with a change in time signature to 8/4. The piano part has eighth notes, and the bass part has half notes. The instruction ". Calmato." is written below the bass staff.

Handwritten musical notation for the fifth system, featuring a key signature change to two flats (Bb, Eb) and a 4/4 time signature. The piano part has a whole note and half notes. The bass part has eighth notes and half notes, with a "mf" dynamic marking.

Handwritten musical notation for the sixth system, continuing the piano and bass staves in the key of two flats and 4/4 time. The piano part has half notes and a whole note. The bass part has eighth notes and half notes.



Handwritten musical score, first system. Treble and bass staves. Key signature: two flats (B-flat, E-flat). Time signature: 10/4. The music features a melodic line in the treble with a slur and a fermata, and a bass line with a similar slur and fermata. A measure rest is marked (4).

Handwritten musical score, second system. Treble and bass staves. The treble staff has a measure rest (4) followed by a melodic phrase. The bass staff continues the melodic line with a slur and a fermata.

Handwritten musical score, third system. Treble and bass staves. The treble staff has a measure rest (6) followed by a melodic phrase. The bass staff continues the melodic line with a slur and a fermata.

Handwritten musical score, fourth system. Treble and bass staves. The treble staff has a measure rest (10) followed by a melodic phrase. The bass staff continues the melodic line with a slur and a fermata.

Handwritten musical score, fifth system. Treble and bass staves. The treble staff has a measure rest (4) followed by a melodic phrase. The bass staff continues the melodic line with a slur and a fermata. The word "Valse." is written above the bass staff.

Handwritten musical score, sixth system. Treble and bass staves. The treble staff has a measure rest (4) followed by a melodic phrase. The bass staff continues the melodic line with a slur and a fermata.



Handwritten musical notation on two staves. The key signature is two flats (Bb, Eb). The first staff begins with a treble clef and a 4/4 time signature. The second staff begins with a bass clef. The music features various notes, rests, and a repeat sign with first and second endings.

Handwritten musical notation on two staves. The first staff contains a melodic line with a quintuplet (marked with a '5' and a slur). The second staff contains a bass line with a half note and a quarter note.

Handwritten musical notation on two staves. The first staff features a triplet (marked with a '3' and a slur). The second staff features a triplet (marked with a '3' and a slur) and a trill (marked with 'tr').

Handwritten musical notation on two staves. The first staff features a trill (marked with 'tr'). The second staff features a triplet (marked with a '3' and a slur) and a half note.

Handwritten musical notation on two staves. The first staff features a triplet (marked with a '3' and a slur) and a half note. The second staff features a half note and a quarter note.

Handwritten musical notation on two staves. The first staff features a half note and a quarter note. The second staff features a half note and a quarter note.



Handwritten musical notation for the first system, featuring a treble and bass staff in G major with various notes and rests.

Handwritten musical notation for the second system, including a trill (tr) and triplet (3) markings.

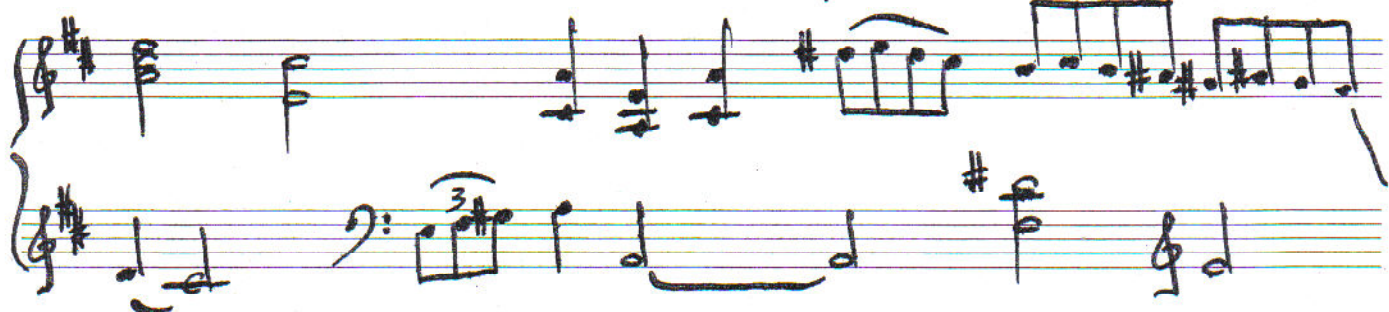
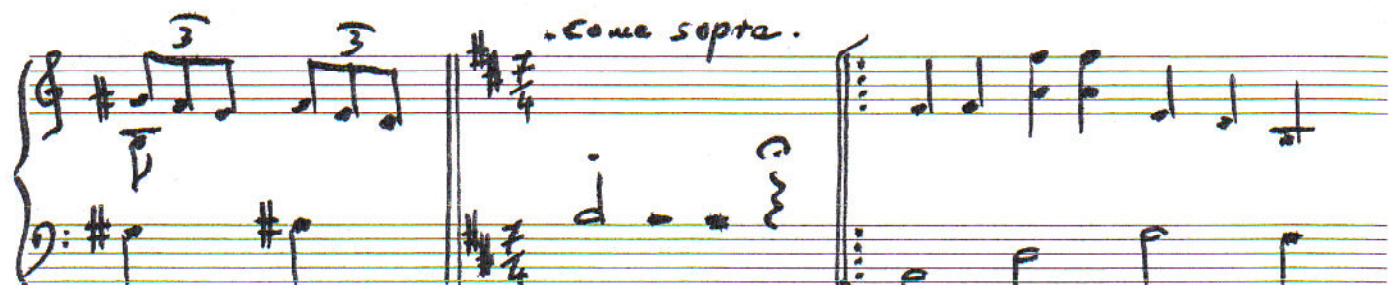
Handwritten musical notation for the third system, showing a key change to B minor and a repeat sign.

Handwritten musical notation for the fourth system, labeled "Valse." with a 3/4 time signature.

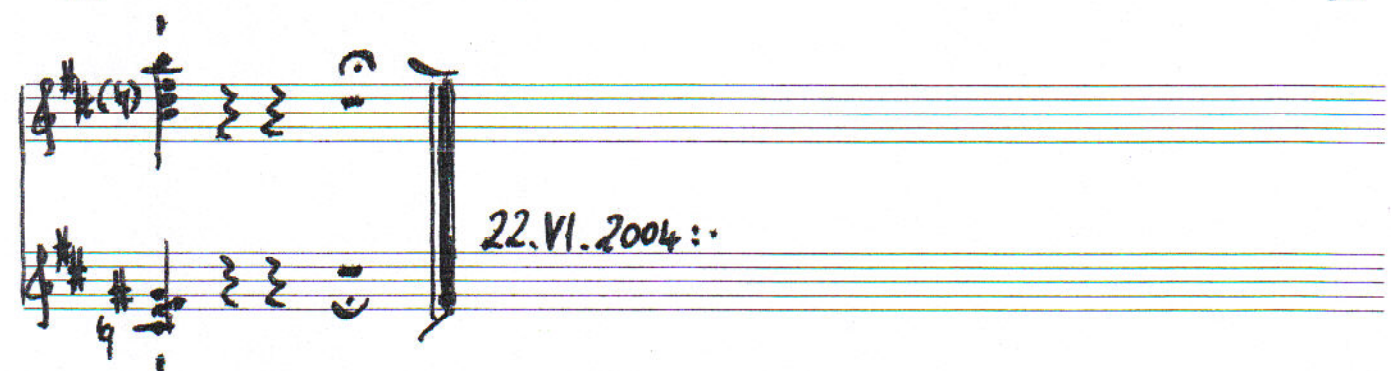
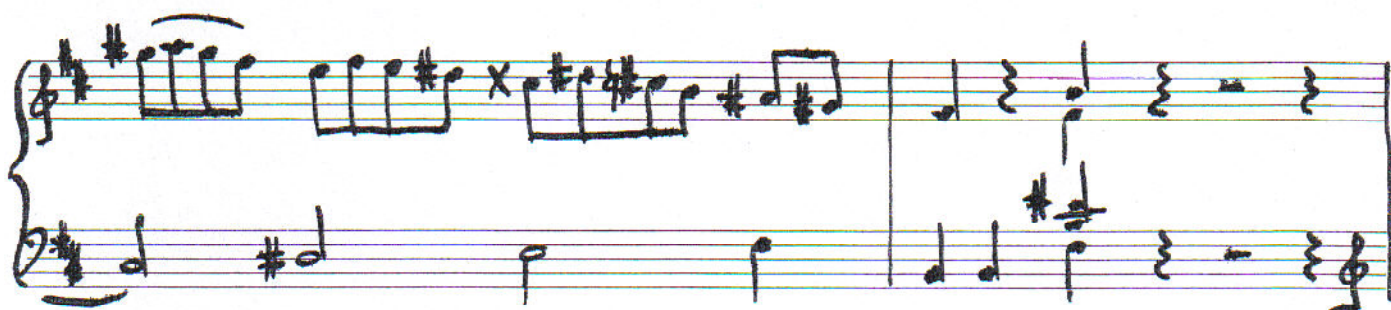
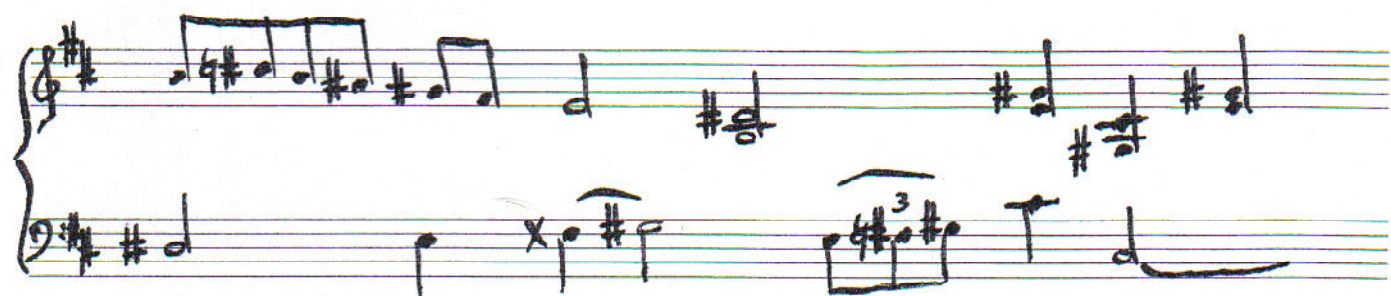
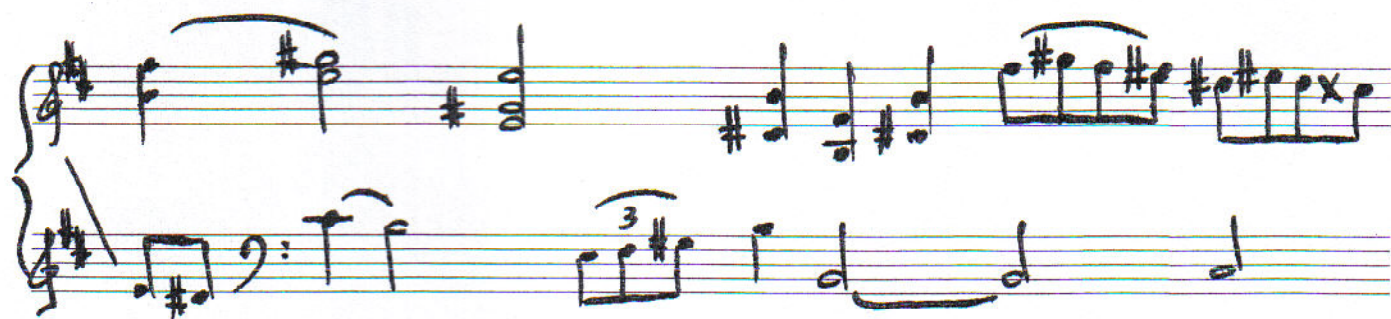
Handwritten musical notation for the fifth system, including a key change to B major and a "ritard." marking.

Handwritten musical notation for the sixth system, labeled "Recitativo." with a dashed line indicating a section.









22.VI.2004:.