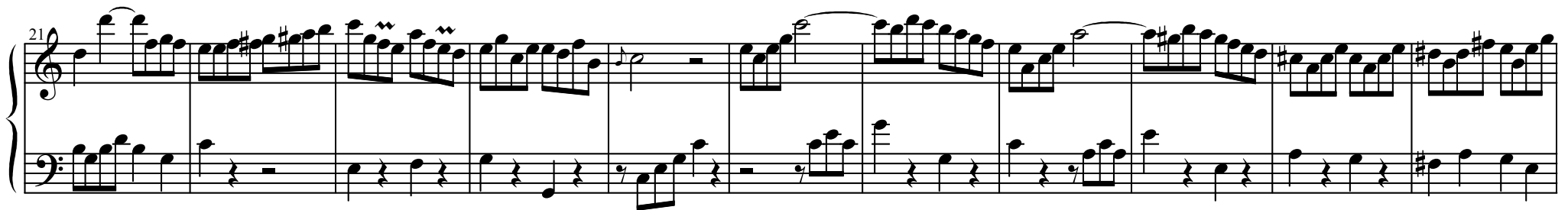
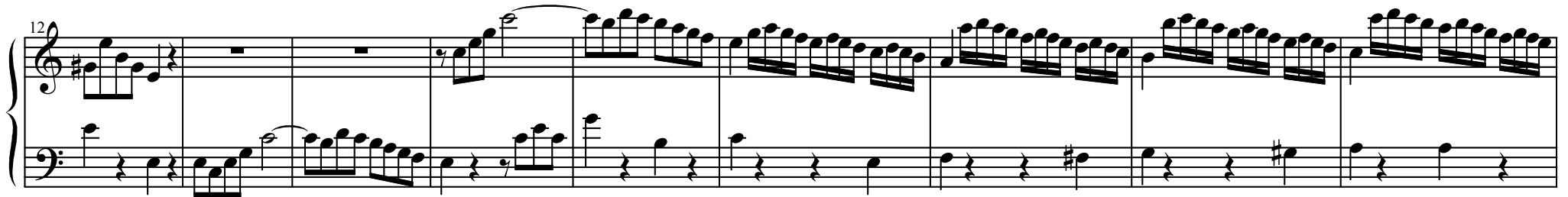
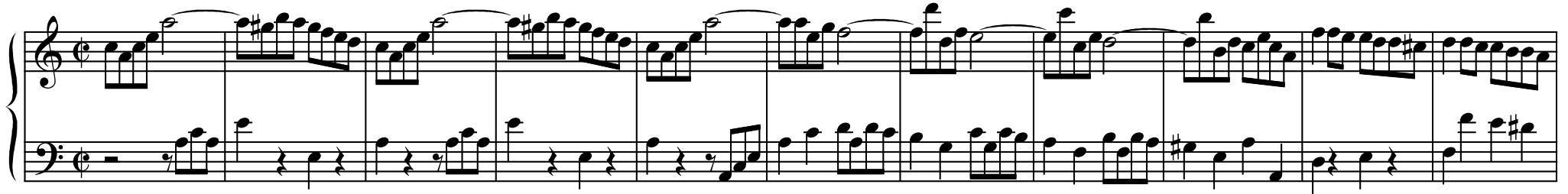


DUO

de Cornet et de positif

Guillaume LASCEUX (1740-1831)



32

This system contains measures 32 through 42. The treble clef staff features a complex melody with many sixteenth and thirty-second notes, often beamed together. The bass clef staff provides a harmonic accompaniment with a mix of eighth and sixteenth notes, including some rests.

43

This system contains measures 43 through 50. The treble clef staff continues with a fast, flowing melody. The bass clef staff has a more rhythmic accompaniment, featuring many eighth notes and some rests.

50

This system contains measures 51 through 57. The treble clef staff has a melodic line with some trills (marked 'tr') and slurs. The bass clef staff continues with a steady accompaniment of eighth notes.

58

This system contains measures 58 through 64, ending with a double bar line. The treble clef staff features a melodic line with trills (marked 'tr') and a final measure with a sharp sign (#). The bass clef staff provides a concluding accompaniment.