

# Violino II

Nicolò Jommelli

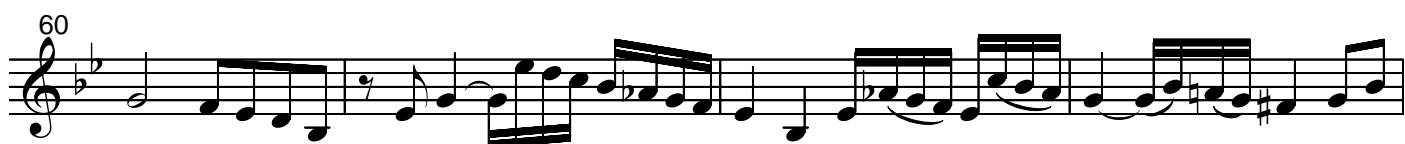
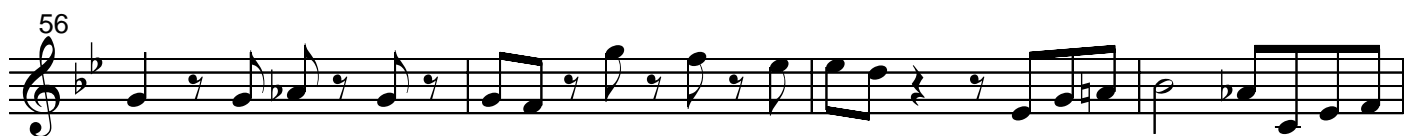
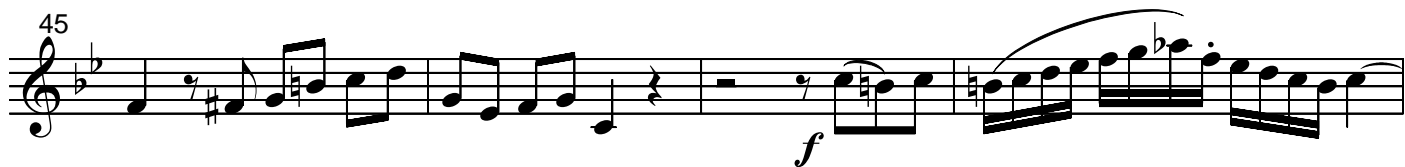
## Care Deus si respiro

Mottetto a soprano solo in Do min.re con violini

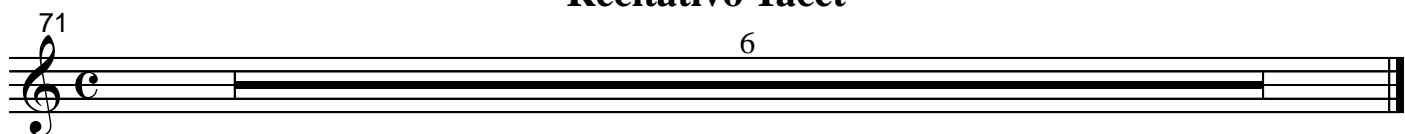
*a cura di Jolando Scarpa*

Allegro

The musical score for Violino II consists of ten staves of music. The key signature is two flats (B-flat and E-flat), and the time signature is common time (C). The tempo is marked 'Allegro'. The dynamics range from *f* (forte) to *pp* (pianissimo). The score includes various musical notations such as slurs, ties, and trills. The first staff begins with a forte (*f*) dynamic and a half note. The second staff starts with a piano (*p*) dynamic and a triplet of eighth notes. The third staff continues with a forte (*f*) dynamic and a half note. The fourth staff begins with a forte (*f*) dynamic and a half note, followed by a trill. The fifth staff starts with a piano (*p*) dynamic and a half note. The sixth staff begins with a piano (*p*) dynamic and a half note. The seventh staff starts with a forte (*f*) dynamic and a half note. The eighth staff begins with a piano (*p*) dynamic and a half note. The ninth staff starts with a piano (*p*) dynamic and a half note. The tenth staff begins with a piano (*p*) dynamic and a half note.



### Recitativo Tacet



Tempo giusto

*f*

83 *tr*

89 *p*

96

102 *f*

109 *p*

116

123

130

137 *f*

144 *p*

151

Detailed description: This musical score is written for a single melodic line in 3/4 time, with a key signature of two flats (B-flat and E-flat). The tempo is marked 'Tempo giusto'. The score consists of 15 measures, grouped into 11 staves. Measure numbers 83, 89, 96, 102, 109, 116, 123, 130, 137, 144, and 151 are placed at the beginning of their respective staves. The music features a variety of dynamics, including fortissimo (*f*) and piano (*p*). Ornamentation is used in measures 83, 109, and 144, indicated by 'tr' and a triplet of eighth notes. The notation includes eighth and sixteenth notes, often beamed together, as well as rests and slurs. The final measure (151) ends with a double bar line.

160

167

174

180

Allegro

*p*

190

*f* *p*

194

*f*

197

*p*

201

*f* *p*

206

210

*f*

213