

Guitar 2

Fuga Prima

Valentin Haussmann (c1550-c1614),
arr. M. Grayson

4

7

10

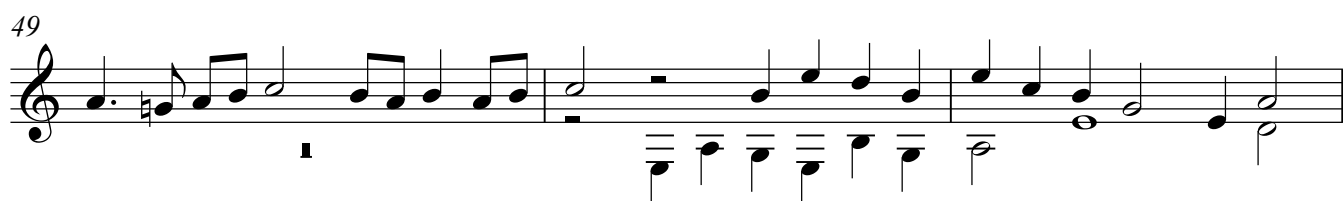
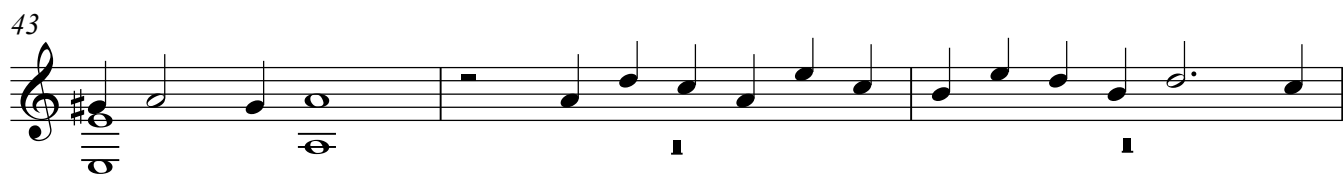
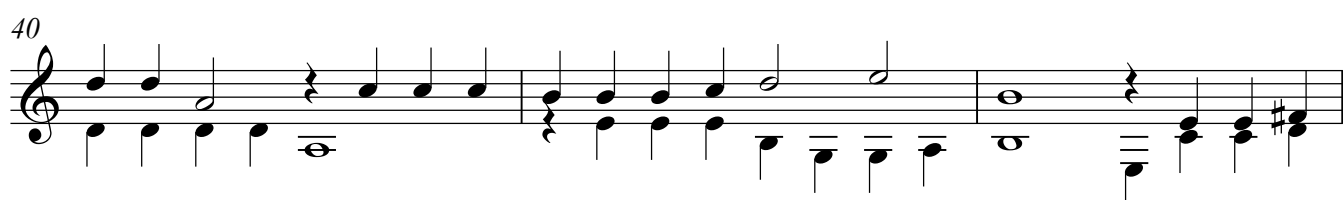
13

16

19

22

V.S.



52

This block contains measures 52, 53, and 54 of the musical score. Measure 52 begins with a treble clef and a key signature of one sharp (F#). The melody starts on a whole rest, followed by a series of eighth and quarter notes. The bass line consists of whole notes and half notes. Measure 53 continues the melody and bass line. Measure 54 concludes the phrase with a final cadence, including a whole note in the bass line and a half note in the melody.

55

The musical score for measure 55 is written on a single staff with a treble clef and a key signature of one flat. The melody starts with a quarter rest, then proceeds with eighth and quarter notes. The bass line is composed of whole notes.

58

1

61

The musical score for Example 10, measures 61-64, is written in 2/4 time. It consists of a treble staff and a bass staff. Measures 61 and 62 show a whole note chord in the bass staff and a whole rest in the treble staff. Measures 63 and 64 show a whole note chord in the bass staff and a whole note melody in the treble staff.

65

65

68

68

71

71

74

74