

Oboi

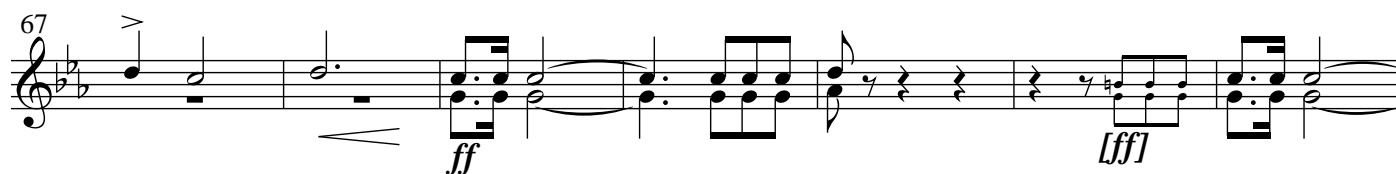
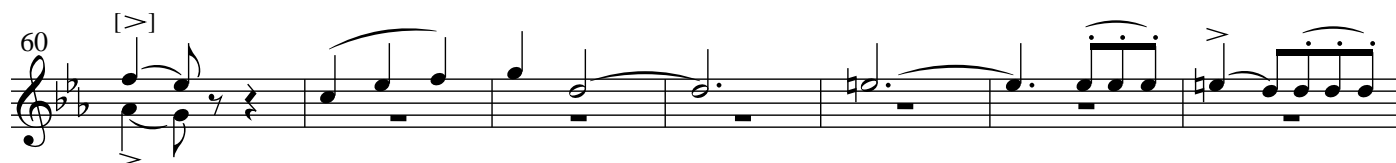
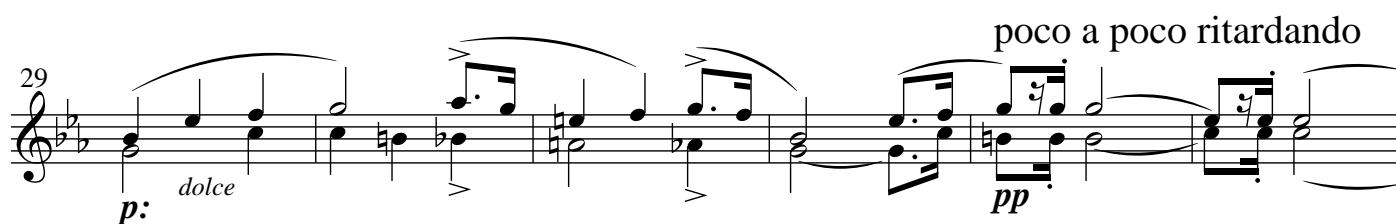
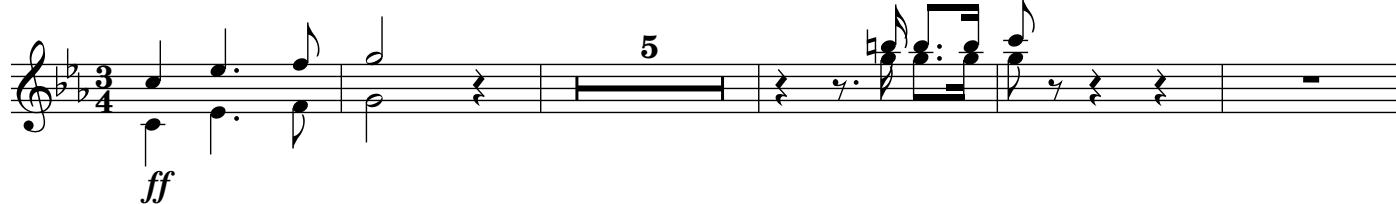
Gejstlig Ouverture for Orkester og Orgel ad libitum

Clerical Overture for orchestra and organ ad lib.

1827

Andante con moto

Johann Peter Emilius Hartmann (1805-1900)



74

mf

80

f *cresc:* *ff*

86

p.

93

fz 13 *dolce*

111

perdendo

117

con molto espressione

124

con molto espressione *pp*

131

f *p* *f* *f*

137

f *p* *f* *f*

143

f *p* *f* *f*

150

ff

156

12

p

This musical staff contains measures 156 through 173. It begins with a treble clef and a key signature of two flats. The notation includes various note values, rests, and a fermata over a whole note in measure 164. A dynamic marking of *p* (piano) is placed below the staff in measure 173.

174

mf

This musical staff contains measures 174 through 180. It continues the melodic line with various note values and rests. A dynamic marking of *mf* (mezzo-forte) is placed below the staff in measure 180.

181

This musical staff contains measures 181 through 187. The notation features a mix of eighth and sixteenth notes, with some measures containing beamed sixteenth notes. A dynamic marking of *f* (forte) is placed below the staff in measure 187.

188

f

This musical staff contains measures 188 through 193. It features a series of beamed sixteenth notes and eighth notes. A dynamic marking of *f* (forte) is placed below the staff in measure 188.

194

p

This musical staff contains measures 194 through 200. The notation includes various note values and rests. A dynamic marking of *p* (piano) is placed below the staff in measure 194.

200

This musical staff contains measures 200 through 205. It features a series of beamed sixteenth notes and eighth notes. A dynamic marking of *f* (forte) is placed below the staff in measure 205.

206

f

This musical staff contains measures 206 through 211. The notation includes various note values and rests. A dynamic marking of *f* (forte) is placed below the staff in measure 206.

212

This musical staff contains measures 212 through 217. It features a series of beamed sixteenth notes and eighth notes. A dynamic marking of *f* (forte) is placed below the staff in measure 217.

218

p:

This musical staff contains measures 218 through 224. The notation includes various note values and rests. A dynamic marking of *p:* (piano) is placed below the staff in measure 224.

225

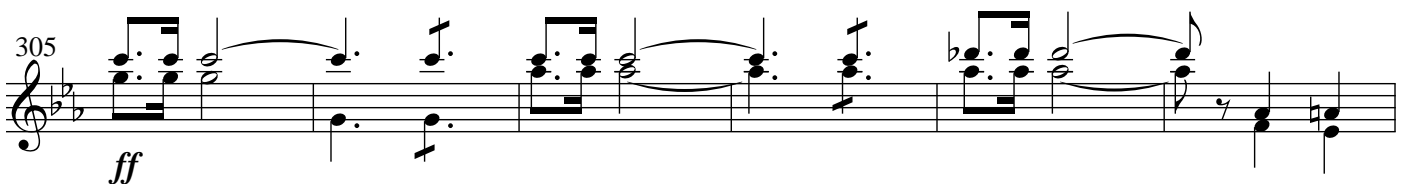
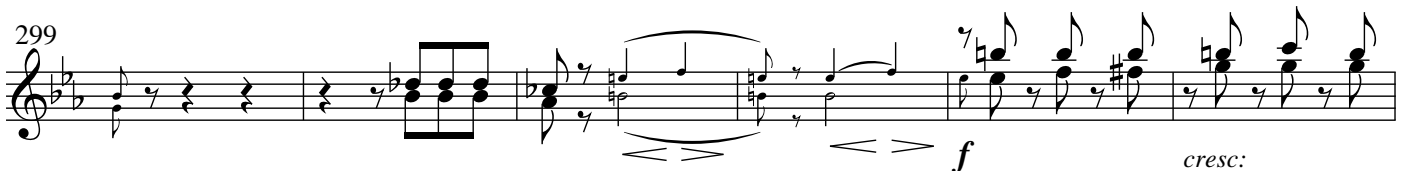
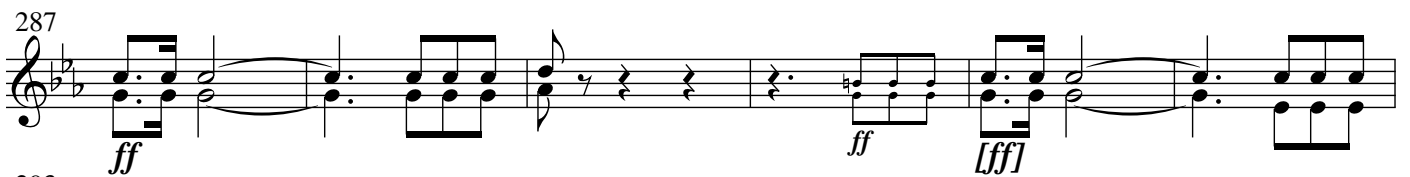
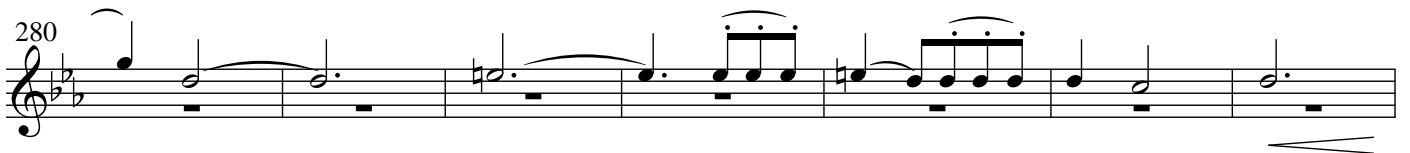
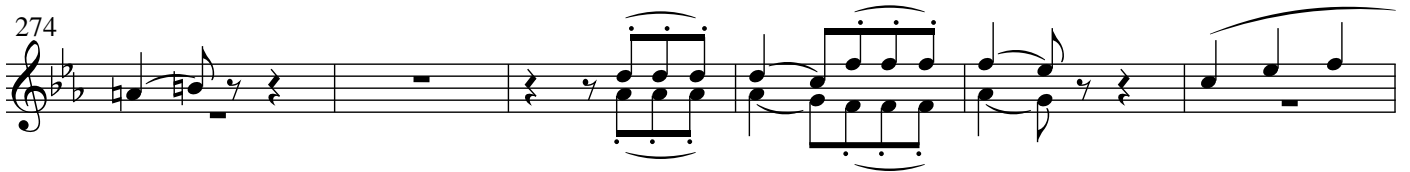
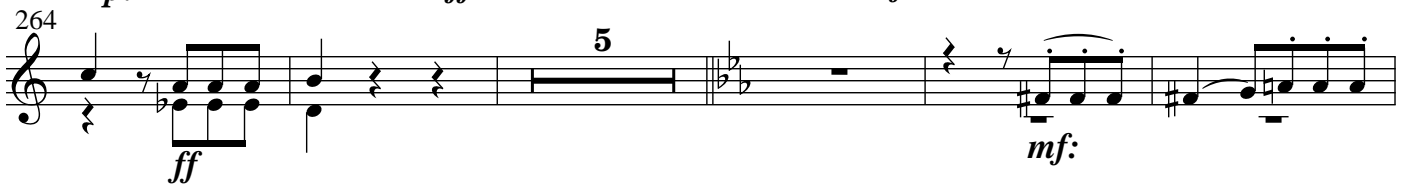
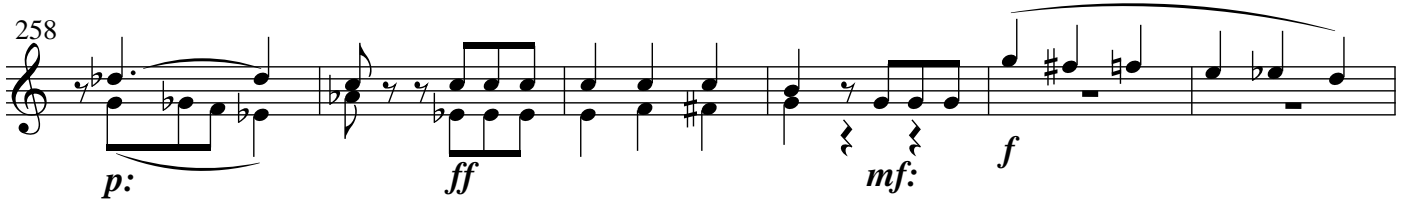
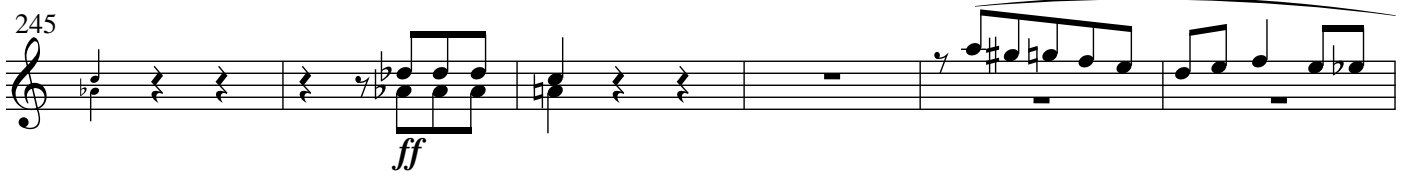
f

This musical staff contains measures 225 through 231. It features a series of beamed sixteenth notes and eighth notes. A dynamic marking of *f* (forte) is placed below the staff in measure 231.

232

p: *f*

This musical staff contains measures 232 through 238. The notation includes various note values and rests. Dynamic markings of *p:* (piano) and *f* (forte) are placed below the staff in measures 232 and 237 respectively.



318

324 7

337 7

350 *f*

356

362

369 *piu presto*
con molto fuoco e ben marcato

375

381

387 *tardando a tempo tardando a tempo*
p: ff

394

perdendo.