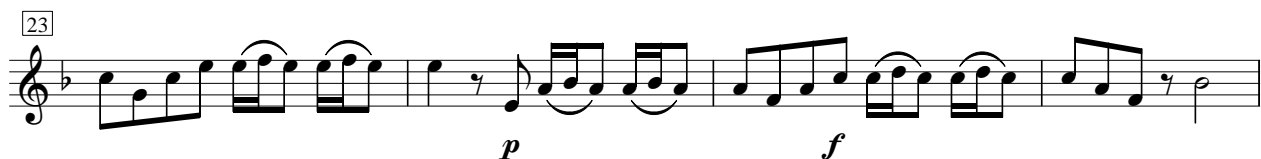


Largo



Oboe 2

47

51

55

59

62

65

69 **Largo**

72 *tr*

75

79

1. 2.

Detailed description: This image shows the musical score for the Oboe 2 part of the first movement of George Frideric Handel's Concerto Grosso in F major, Op. 3, No. 4. The score is written on a single staff in treble clef with a key signature of one flat (B-flat). The tempo is marked 'Largo' starting at measure 69. The score includes measures 47 through 79. Measure 47 is the first measure on this page. The music features various rhythmic patterns, including eighth and sixteenth notes, and rests. Dynamic markings include 'p' (piano) at measure 59 and 'f' (forte) at measure 60. A trill (tr) is marked above the eighth note in measure 72. The piece concludes with a first ending (1.) and a second ending (2.) leading to a final cadence.