

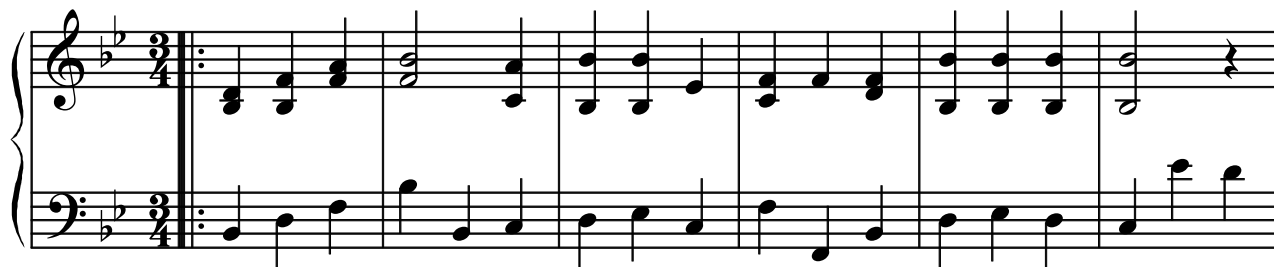
# Organ

## IV

Georg Friedrich Händel (1685-1759)

Arr. Michel Rondeau

Vivace (♩. = circa 90)



27

Measures 27-33 of the musical score. The key signature is two flats (B-flat and E-flat). The melody in the right hand features eighth and sixteenth notes, often beamed together, with some measures containing chords. The bass line provides a steady accompaniment with eighth and sixteenth notes, including some chords. A fermata is placed over the final note of measure 33.

34

Measures 34-40 of the musical score. The key signature remains two flats. The melody continues with similar rhythmic patterns. Measure 34 begins with a whole rest in the right hand. The piece concludes with a double bar line and repeat dots at the end of measure 40, with a fermata over the final note.