

# TUONI ECCLESIASTICI

## con li loro Versetti

Gaetano Greco ( 1657 - 1728 )

a cura di Jolando Scarpa

### P.° Tuono

Partimento

Di - xit Do - mi - nus Do - - - mi - no

me - o Se - de à dex - tris me - - - is.

6 # 5 # 43

Detailed description: This block contains the musical notation for the 'Partimento' in the P.° Tuono. It consists of two systems of music. The first system has a vocal line (treble clef) and a lute line (bass clef). The vocal line contains the lyrics 'Di - xit Do - mi - nus Do - - - mi - no'. The lute line contains the notes G2, B2, D3, F3, A2, C3, and E2. The second system also has a vocal line and a lute line. The vocal line contains the lyrics 'me - o Se - de à dex - tris me - - - is.'. The lute line contains the notes G2, B2, D3, F3, A2, C3, and E2. There are fingerings (6, #, 5, #, 43) written below the lute line.

Part°  
alio modo

Di - xit Do - mi - nus Do - - - mi - no

me - o Se - de à dex - tris me - - - is.

56 6 4 6 6 5 #

76 # 5 5 76 # 56 # 56 43

Detailed description: This block contains the musical notation for the 'Part° alio modo' in the P.° Tuono. It consists of two systems of music. The first system has a vocal line (treble clef) and a lute line (bass clef). The vocal line contains the lyrics 'Di - xit Do - mi - nus Do - - - mi - no'. The lute line contains the notes G2, B2, D3, F3, A2, C3, and E2. The second system also has a vocal line and a lute line. The vocal line contains the lyrics 'me - o Se - de à dex - tris me - - - is.'. The lute line contains the notes G2, B2, D3, F3, A2, C3, and E2. There are fingerings (56, 6, 4, 6, 6, 5, #, 76, #, 5, 5, 76, #, 56, #, 56, 43) written below the lute line.

Part°  
alio modo

Di - xit Do - mi - nus Do - - - mi - no me - o

Se - de à dex - tris me - - - is.

*Seguono li Versetti*

Versetto \*

Versetto \*

Versetto \*

## Finali diversi, del P° Tuono

### P° Finale

Partimento

Se - - - de à de - xtris me - - - is.

43

Part°  
alio modo

Se - - - de à de - xtris me - - - is.

5 6 #

Part°  
alio modo

Se - - - de à de - xtris me - - - is.

6# 56 43

Part<sup>o</sup>  
alio modo

Se - - - de à de - xtris me - - - is.

5 6 6# 7 6# 4 b

Part<sup>o</sup>  
alio modo

Se - - - de à de - xtris me - - - is.

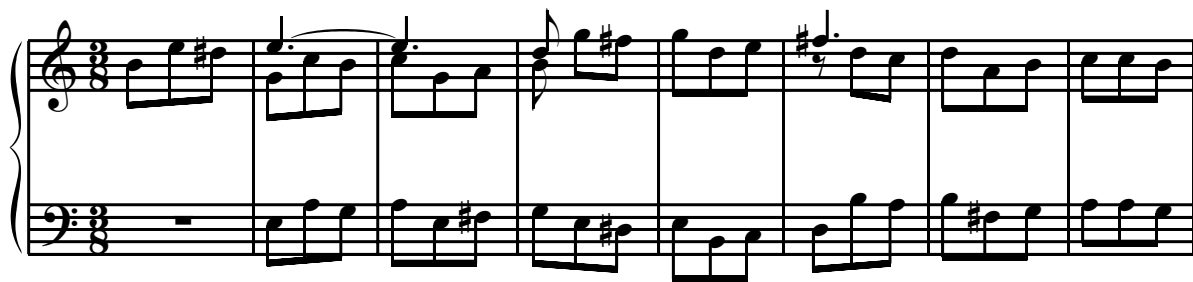
5 6# 6 6 5 4 #

*Seguono li Versetti*

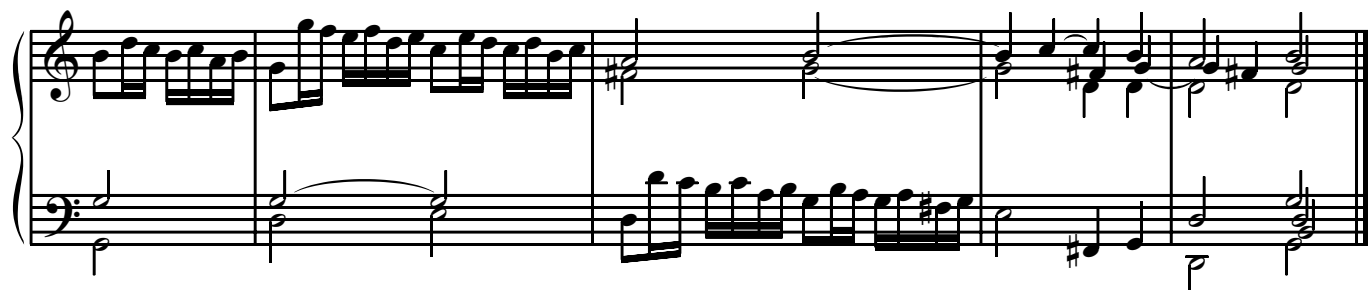
## Versetto \*

## Versetto

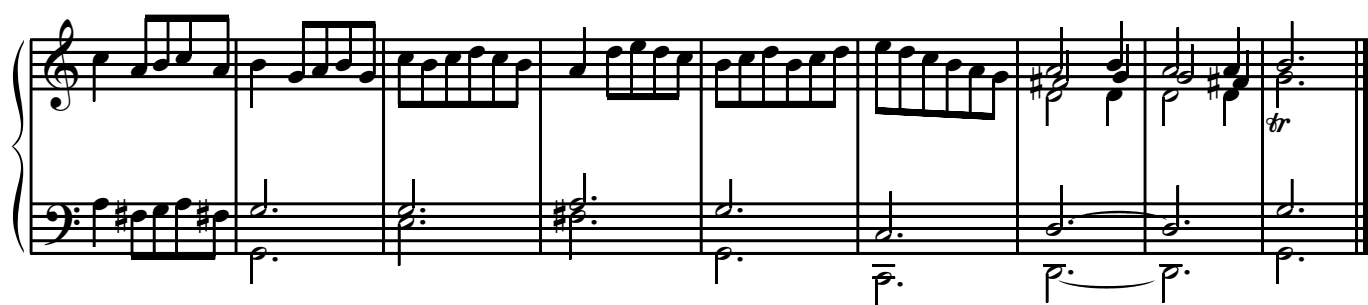
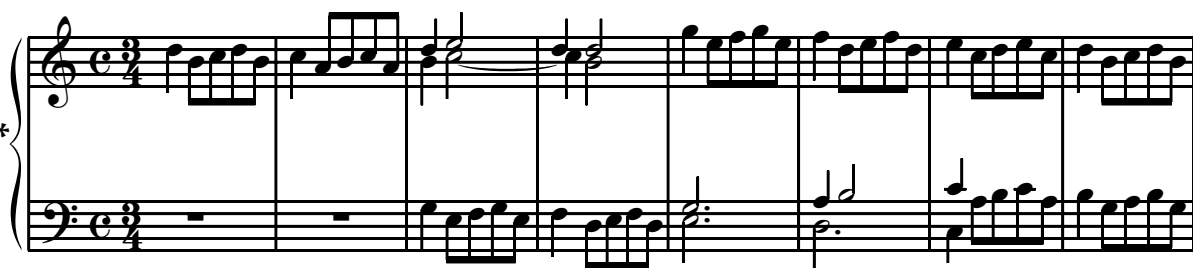
Versetto



Versetto \*



Versetto \*



## Secondo Finale del Primo Tuono

Partimento

*A' questo Finale si possono sonare li Versetti con questo segno \* Ut Supra*

## Terzo Finale del P.º Tuono

[Partimento]

*Seguono li Versetti*

Versetto

Versetto

Versetto

The first Versetto is a short musical piece in C major, 4/4 time. It consists of two measures. The treble staff begins with a quarter rest, followed by a half note G4, a quarter note A4, and a half note B4. The bass staff begins with a quarter rest, followed by a half note F3, a quarter note G3, and a half note A3. The piece concludes with a double bar line.

## Quarto Finale del Primo Tuono

The Quarto Finale del Primo Tuono is a short musical piece in C major, 4/4 time. It consists of two measures. The treble staff begins with a quarter rest, followed by a half note G4, a quarter note A4, and a half note B4. The bass staff begins with a quarter rest, followed by a half note F3, a quarter note G3, and a half note A3. The piece concludes with a double bar line.

Se - de à de - xtris me - - - is.

4 3

*Seguono li Versetti*

Versetto

The second Versetto is a short musical piece in C major, 4/4 time. It consists of two measures. The treble staff begins with a quarter rest, followed by a half note G4, a quarter note A4, and a half note B4. The bass staff begins with a quarter rest, followed by a half note F3, a quarter note G3, and a half note A3. The piece concludes with a double bar line.

## Versetto

The first system of the 'Versetto' consists of two staves. The upper staff is in treble clef with a key signature of one sharp (F#) and a common time signature (C). It begins with a trill (tr) on a quarter note, followed by eighth notes and a half note. The lower staff is in bass clef with the same key signature and time signature. It starts with a whole rest, followed by a trill on a quarter note, then eighth notes and a half note. The system concludes with a double bar line.

## Versetto

The second system of the 'Versetto' consists of two staves. The upper staff is in treble clef with a key signature of one sharp (F#) and a common time signature (C). It features a series of eighth and sixteenth notes. The lower staff is in bass clef with the same key signature and time signature, featuring a series of eighth and sixteenth notes. The system concludes with a double bar line.

## Versetto

The third system of the 'Versetto' consists of two staves. The upper staff is in treble clef with a key signature of one sharp (F#) and a common time signature (C). It begins with a trill (tr) on a quarter note, followed by eighth notes and a half note. The lower staff is in bass clef with the same key signature and time signature. It starts with a whole rest, followed by a trill on a quarter note, then eighth notes and a half note. The system concludes with a double bar line.

*Fine del P.º Tuono*