

Violino 1

No 4. Concerto, a Viola d' Amore, Viola, 2 Violini, Viola e Cembalo.

Christoph Graupner (ca. 1728-31)

Grave, e staccati



Vivace

Violino 1 score, measures 1-70. The score is written in treble clef with a key signature of two sharps (F# and C#) and a common time signature (C). The tempo is marked "Vivace". The score consists of ten staves of music. Measures 1-5 are a continuous eighth-note melody. Measures 6-9 continue the melody. Measures 10-14 are a continuous eighth-note melody. Measures 15-19 are a continuous eighth-note melody. Measures 20-21 are a whole rest. Measures 22-23 are a continuous eighth-note melody. Measures 24-25 are a whole rest. Measures 26-27 are a continuous eighth-note melody. Measures 28-31 are a continuous eighth-note melody. Measures 32-33 are a whole rest. Measures 34-35 are a continuous eighth-note melody. Measures 36-37 are a continuous eighth-note melody. Measures 38-42 are a continuous eighth-note melody. Measures 43-44 are a whole rest. Measures 45-46 are a continuous eighth-note melody. Measures 47-48 are a continuous eighth-note melody. Measures 49-50 are a continuous eighth-note melody. Measures 51-52 are a continuous eighth-note melody. Measures 53-54 are a continuous eighth-note melody. Measures 55-56 are a continuous eighth-note melody. Measures 57-58 are a continuous eighth-note melody. Measures 59-60 are a continuous eighth-note melody. Measures 61-62 are a whole rest. Measures 63-64 are a continuous eighth-note melody. Measures 65-66 are a continuous eighth-note melody. Measures 67-68 are a continuous eighth-note melody. Measures 69-70 are a continuous eighth-note melody.

6

10

15

22

28

38

43

49

55

61

70

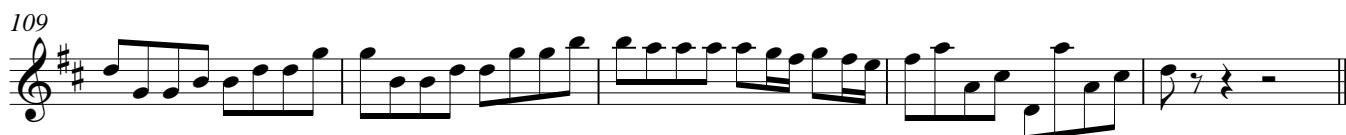
2

5

pp.

pp.

3



Grave.

(Balkung viertelweise)



Allegro.

Violino 1 musical score, measures 1-80. The score is written for Violino 1 in G major (one sharp) and common time (C). The tempo is marked Allegro. The score consists of ten staves of music. Measure numbers 6, 11, 16, 30, 36, 44, 51, 58, 65, 72, and 80 are indicated at the beginning of their respective staves. Dynamics include fort. (forte), pp. (pianissimo), and a crescendo (+). A repeat sign is present at the end of measure 58. A fermata is placed over measures 17-18.

Measures 1-5: Quarter notes G4, A4, B4, C5, B4, A4, G4.

Measures 6-10: Quarter notes G4, A4, B4, C5, B4, A4, G4, F#4, E4, D4.

Measures 11-15: Quarter notes G4, A4, B4, C5, B4, A4, G4, F#4, E4, D4.

Measures 16-18: Quarter notes G4, A4, B4, C5, B4, A4, G4, F#4, E4, D4.

Measures 19-23: Quarter notes G4, A4, B4, C5, B4, A4, G4, F#4, E4, D4.

Measures 24-28: Quarter notes G4, A4, B4, C5, B4, A4, G4, F#4, E4, D4.

Measures 29-33: Quarter notes G4, A4, B4, C5, B4, A4, G4, F#4, E4, D4.

Measures 34-38: Quarter notes G4, A4, B4, C5, B4, A4, G4, F#4, E4, D4.

Measures 39-43: Quarter notes G4, A4, B4, C5, B4, A4, G4, F#4, E4, D4.

Measures 44-48: Quarter notes G4, A4, B4, C5, B4, A4, G4, F#4, E4, D4.

Measures 49-53: Quarter notes G4, A4, B4, C5, B4, A4, G4, F#4, E4, D4.

Measures 54-58: Quarter notes G4, A4, B4, C5, B4, A4, G4, F#4, E4, D4.

Measures 59-63: Quarter notes G4, A4, B4, C5, B4, A4, G4, F#4, E4, D4.

Measures 64-68: Quarter notes G4, A4, B4, C5, B4, A4, G4, F#4, E4, D4.

Measures 69-73: Quarter notes G4, A4, B4, C5, B4, A4, G4, F#4, E4, D4.

Measures 74-78: Quarter notes G4, A4, B4, C5, B4, A4, G4, F#4, E4, D4.

Measures 79-83: Quarter notes G4, A4, B4, C5, B4, A4, G4, F#4, E4, D4.

86

97

109

117

126

134

141

149

156

160