

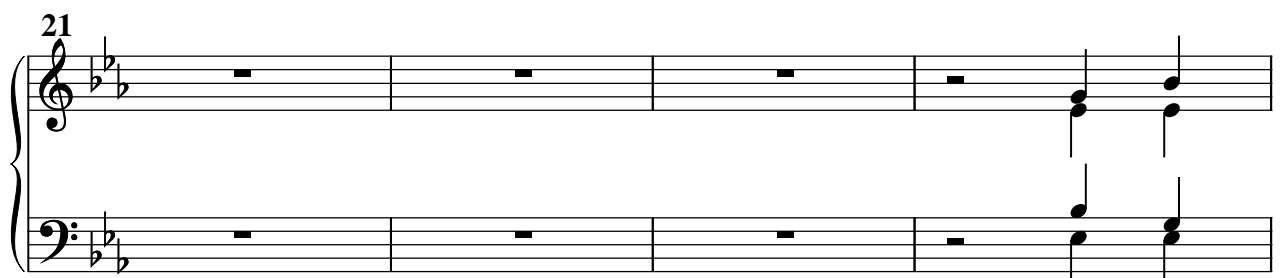
Hoch tut euch auf

Psalm 24,9+10

Christoph Willibald Gluck

Orgel/Klavier
begleitung

Satz: Jürgen Knuth



Noch tut euch auf

25

Measures 25-29: Treble and bass staves. Measures 25-26 contain chords and single notes. Measures 27-29 are rests.

30

Measures 30-34: Treble and bass staves. Measures 30-31 contain chords and single notes. Measures 32-34 are rests.

35

Measures 35-38: Treble and bass staves. Measures 35-36 contain chords and single notes. Measures 37-38 are rests.

39

Measures 39-42: Treble and bass staves. Measures 39-40 contain chords and single notes. Measures 41-42 are rests.

43

Measures 43-46: Treble and bass staves. Measures 43-44 contain chords and single notes. Measures 45-46 are rests.

Hoch tut euch auf

49

Measures 49-55: Treble staff has rests for measures 49-54, followed by a melodic phrase in measures 55-56. Bass staff has rests for measures 49-54, followed by a supporting bass line in measures 55-56.

56

Measures 56-61: Treble staff has a melodic line with a slur over measures 56-58, followed by rests. Bass staff has a supporting bass line with a slur over measures 56-58, followed by rests.

62

Measures 62-66: Treble staff has a melodic line with a slur over measures 62-64, followed by rests. Bass staff has a supporting bass line with a slur over measures 62-64, followed by rests.

67

Measures 67-72: Treble staff has a melodic line with a slur over measures 67-69, followed by rests. Bass staff has a supporting bass line with a slur over measures 67-69, followed by rests.