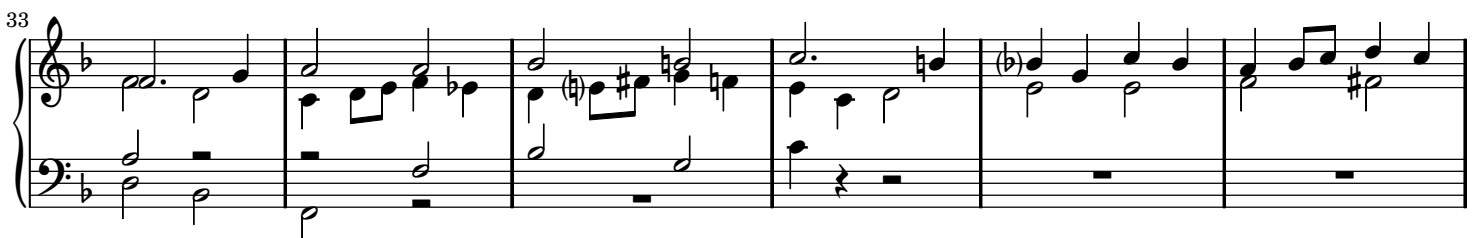
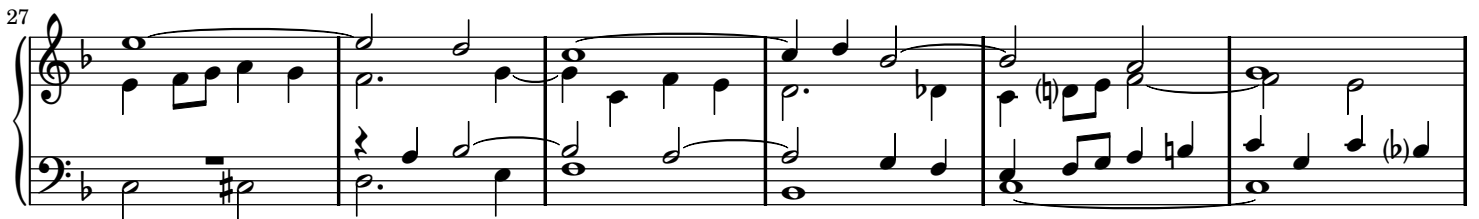
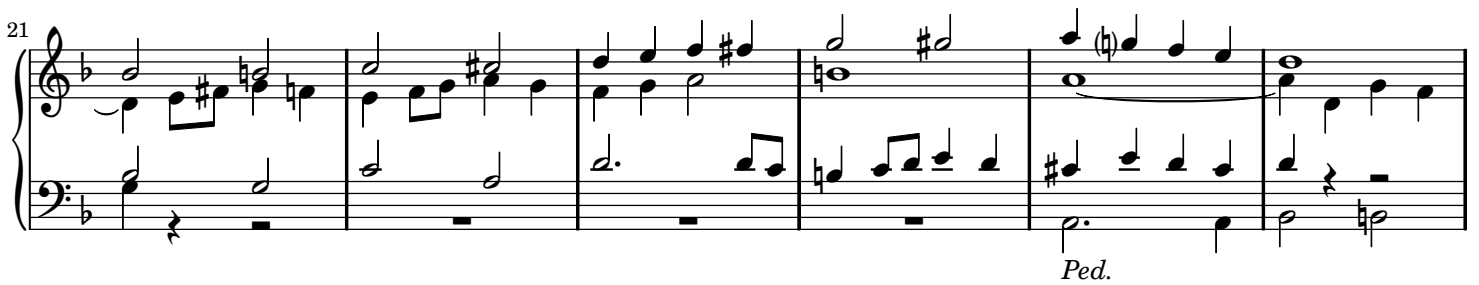
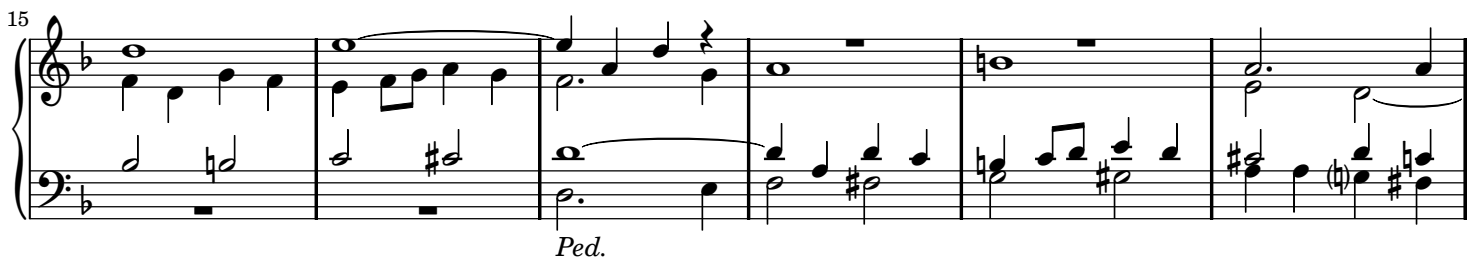
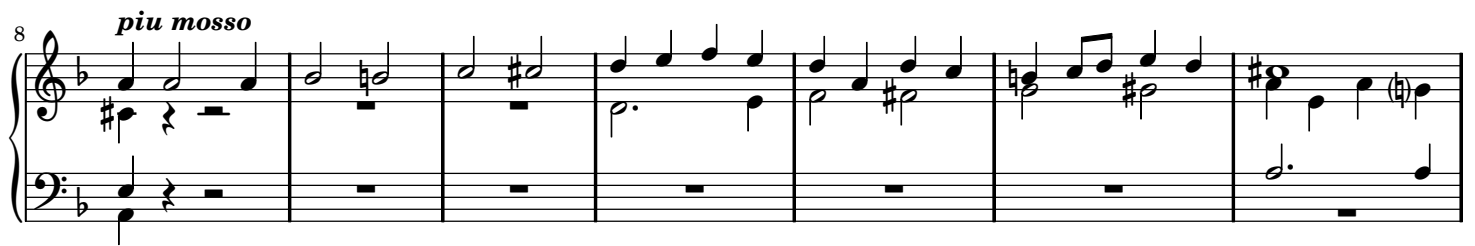


Cypressenlaub

Nr. 5

Robert Führer (1807 - 1861)

Adagio



39

Ped.

This system contains measures 39 through 44. The music is in a key with two flats (B-flat and E-flat) and a common time signature. The right hand features a melodic line with eighth and sixteenth notes, while the left hand provides a harmonic accompaniment with chords and moving lines. A pedaling instruction is placed below the first measure of this system.

45

This system contains measures 45 through 49. The musical texture continues with the right hand playing a more active melodic role and the left hand supporting it with sustained chords and moving bass lines.

50

Ped.

This system contains measures 50 through 54. The notation shows a continuation of the musical themes, with a pedaling instruction appearing at the end of the system.

55

This system contains measures 55 through 60. The musical development continues, featuring a variety of note values and rests in both hands.

61

Ped.

This system contains measures 61 through 66. The music concludes this section with a pedaling instruction at the beginning.

67

This system contains measures 67 through 72, which form the final section of the page. The music ends with a double bar line in the final measure.