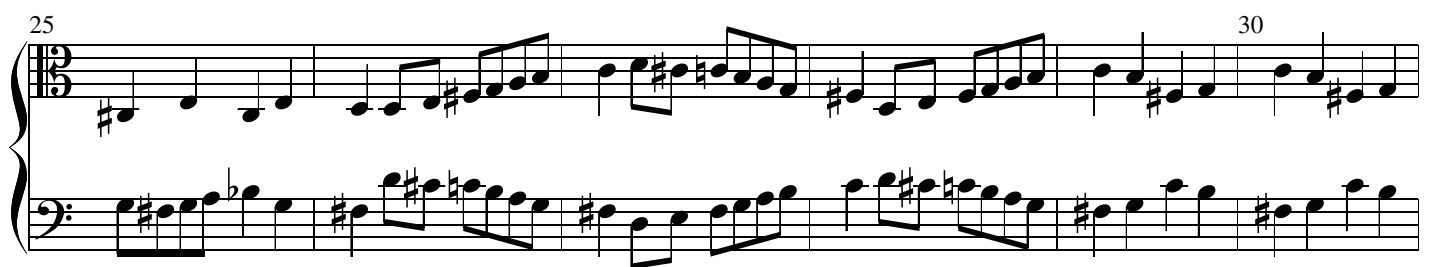
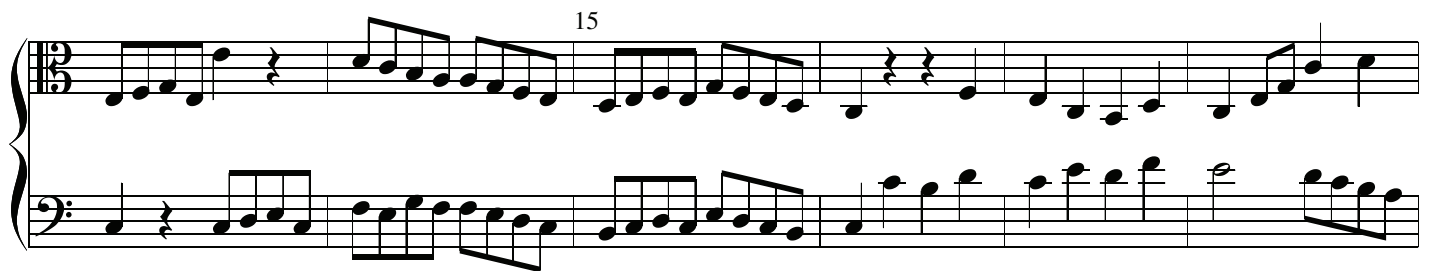
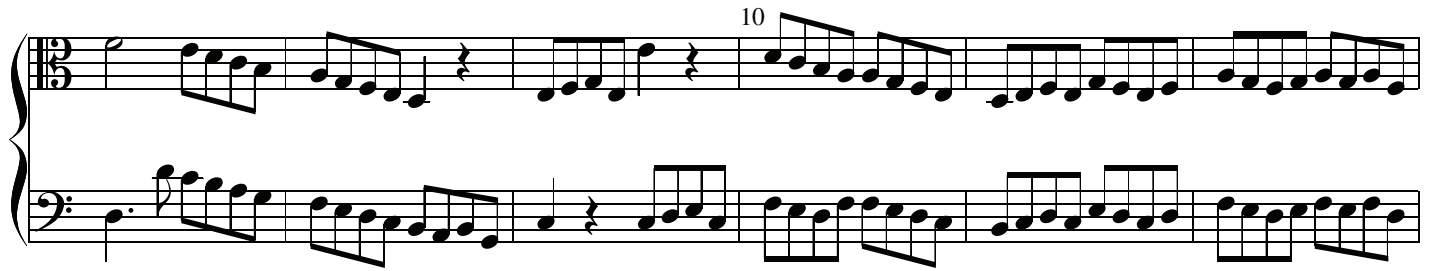
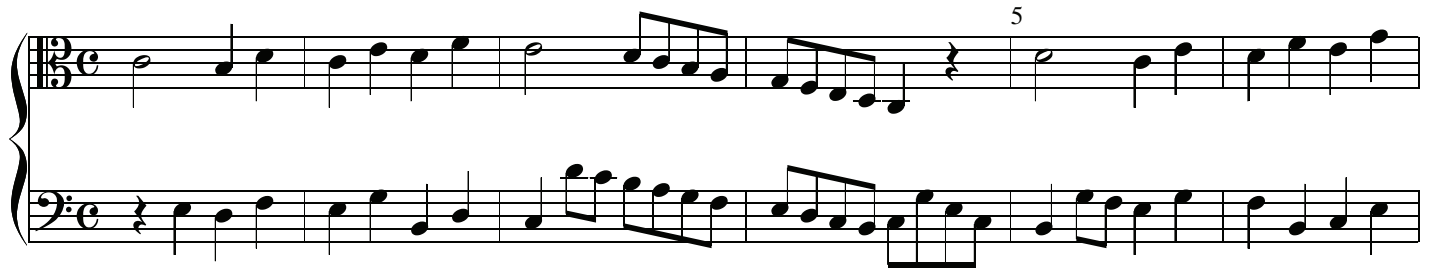


Allegro

Beethoven



35

First system of a musical score, measures 35-40. The treble clef staff contains a melody with eighth and quarter notes, including a flat in measure 36. The bass clef staff provides a harmonic accompaniment with eighth and quarter notes, featuring a flat in measure 36.

40

Second system of a musical score, measures 40-45. The treble clef staff continues the melody with eighth and quarter notes. The bass clef staff continues the accompaniment with eighth and quarter notes.

45

Third system of a musical score, measures 45-50. The treble clef staff continues the melody with eighth and quarter notes. The bass clef staff continues the accompaniment with eighth and quarter notes.

50

Fourth system of a musical score, measures 50-55. The treble clef staff continues the melody with eighth and quarter notes. The bass clef staff continues the accompaniment with eighth and quarter notes.

55 60

Fifth system of a musical score, measures 55-60. The treble clef staff continues the melody with eighth and quarter notes. The bass clef staff continues the accompaniment with eighth and quarter notes.

65

mf

This system contains measures 65 through 70. The treble clef staff begins with a treble clef and a key signature of one sharp (F#). It features a melodic line with eighth and sixteenth notes, including a triplet of eighth notes in measure 66. The bass clef staff begins with a bass clef and a key signature of one sharp (F#). It features a bass line with eighth and sixteenth notes, including a triplet of eighth notes in measure 66. A dynamic marking of *mf* (mezzo-forte) is centered below the bass staff.

70

This system contains measures 70 through 75. The treble clef staff continues the melodic line with eighth and sixteenth notes. The bass clef staff continues the bass line with eighth and sixteenth notes. The key signature remains one sharp (F#).

75

This system contains measures 75 through 80. The treble clef staff features a melodic line with eighth and sixteenth notes. The bass clef staff continues the bass line with eighth and sixteenth notes. The key signature remains one sharp (F#).

80

This system contains measures 80 through 85. The treble clef staff features a melodic line with eighth and sixteenth notes. The bass clef staff continues the bass line with eighth and sixteenth notes. The key signature remains one sharp (F#).

85

90

This system contains measures 85 through 90. The treble clef staff features a melodic line with eighth and sixteenth notes. The bass clef staff continues the bass line with eighth and sixteenth notes. The key signature remains one sharp (F#).

95

This system contains measures 95 through 100. The treble clef staff features a melodic line with a half rest in measure 95, followed by eighth and quarter notes, and a half note in measure 100. The bass clef staff provides a continuous accompaniment of eighth notes, with a key signature change to one flat (B-flat) in measure 98.

100

This system contains measures 100 through 105. The treble clef staff has a half rest in measure 100, followed by a quarter note in measure 101, and then eighth and quarter notes. The bass clef staff continues the eighth-note accompaniment, maintaining the one-flat key signature.

105

This system contains measures 105 through 110. The treble clef staff begins with a sixteenth-note scale-like run, followed by a half note in measure 105, and then eighth and quarter notes. The bass clef staff continues the eighth-note accompaniment.

110

This system contains measures 110 through 115. The treble clef staff features a half note in measure 110, followed by quarter and eighth notes, and a half note in measure 115. The bass clef staff continues the eighth-note accompaniment.

115 120

This system contains measures 115 through 120. The treble clef staff has a half note in measure 115, followed by eighth and quarter notes, and a half note in measure 120. The bass clef staff continues the eighth-note accompaniment, with a key signature change to two flats (B-flat and E-flat) in measure 118.

125

Handwritten musical notation for measures 125-130. The system consists of two staves. The upper staff is in treble clef with a key signature of one flat (B-flat) and a 12/8 time signature. It contains six measures of music, primarily featuring eighth and sixteenth notes. The lower staff is in bass clef and contains six measures of music, primarily featuring eighth and sixteenth notes. The measures are numbered 125 through 130.

130

Handwritten musical notation for measures 130-135. The system consists of two staves. The upper staff is in treble clef with a key signature of one flat (B-flat) and a 12/8 time signature. It contains six measures of music, primarily featuring eighth and sixteenth notes. The lower staff is in bass clef and contains six measures of music, primarily featuring eighth and sixteenth notes. The measures are numbered 130 through 135.

135

Handwritten musical notation for measures 135-140. The system consists of two staves. The upper staff is in treble clef with a key signature of one flat (B-flat) and a 12/8 time signature. It contains six measures of music, primarily featuring eighth and sixteenth notes. The lower staff is in bass clef and contains six measures of music, primarily featuring eighth and sixteenth notes. The measures are numbered 135 through 140.

140

Handwritten musical notation for measures 140-145. The system consists of two staves. The upper staff is in treble clef with a key signature of one flat (B-flat) and a 12/8 time signature. It contains six measures of music, primarily featuring eighth and sixteenth notes. The lower staff is in bass clef and contains six measures of music, primarily featuring eighth and sixteenth notes. The measures are numbered 140 through 145.

145

150

Handwritten musical notation for measures 145-150. The system consists of two staves. The upper staff is in treble clef with a key signature of one flat (B-flat) and a 12/8 time signature. It contains six measures of music, primarily featuring eighth and sixteenth notes. The lower staff is in bass clef and contains six measures of music, primarily featuring eighth and sixteenth notes. The measures are numbered 145 through 150.

155

Two staves of music. The top staff is in treble clef with a key signature of two flats (B-flat and E-flat). It contains a melodic line with eighth and quarter notes, followed by a whole note and a half note. The bottom staff is in bass clef and contains a corresponding bass line. Both staves end with a double bar line. Above the first measure of the top staff is a fermata symbol.

160

Two empty staves, one in treble clef and one in bass clef, both with a key signature of two flats. The system is labeled with the measure number 160 above the first measure of the top staff.

165

Two empty staves, one in treble clef and one in bass clef, both with a key signature of two flats. The system is labeled with the measure number 165 above the first measure of the top staff.

170

Two empty staves, one in treble clef and one in bass clef, both with a key signature of two flats. The system is labeled with the measure number 170 above the first measure of the top staff.

Two empty staves, one in treble clef and one in bass clef, both with a key signature of two flats. This system is unlabeled.