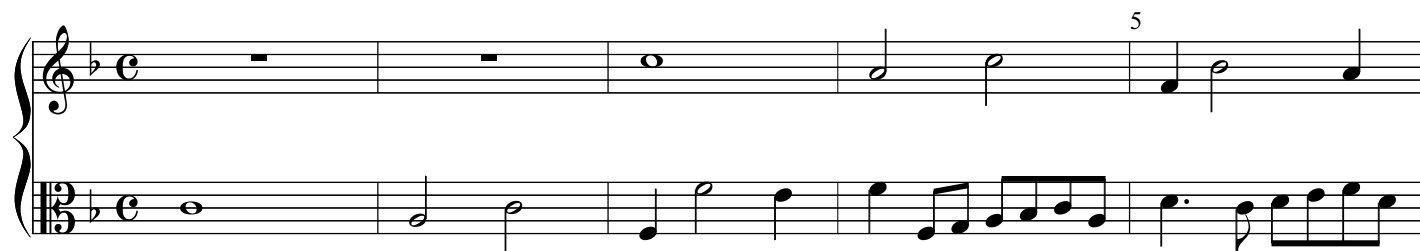


# Canzonet

La Caccia?

Thomas Morley



30

35

A musical score for the song "The Rose Tree". The score is written for a piano, with a treble clef on the right and a bass clef on the left. The key signature is one flat (B-flat). The time signature is 3/4. The melody is in the treble clef, and the accompaniment is in the bass clef. The score consists of 40 measures. The melody starts with a half note G4, followed by a quarter note A4, a quarter note Bb4, and a quarter note C5. The accompaniment starts with a half note G3, followed by a quarter note A3, a quarter note Bb3, and a quarter note C4. The score ends with a double bar line and the number 40.

The musical score for 'The Rose Tree' is presented in two systems. The first system consists of a treble clef staff and a bass clef staff. The treble staff begins with a key signature of one flat (B-flat) and a common time signature (C). The melody is written in a simple, folk-like style, featuring a series of eighth and quarter notes. The bass staff provides a simple harmonic accompaniment, primarily using quarter and eighth notes. The second system continues the melody and accompaniment, with the treble staff ending on a whole note chord. The key signature remains one flat throughout the piece.

The musical score for 'The Rose Tree' is presented in two systems. The first system consists of a treble staff and a bass staff. The treble staff begins with a treble clef, a key signature of one flat (B-flat), and a common time signature (C). The melody starts on a G4 note, followed by a half note A4, a quarter note B-flat4, and a half note C5. After a whole rest, the melody continues with a quarter note G4, a quarter note F4, a quarter note E4, and a quarter note D4. A slur covers the next four notes: D4, C4, B-flat3, and A3. The system concludes with a quarter note G3 and a half note F3. The bass staff begins with a bass clef and a 3/4 time signature. It starts with a quarter note G2, a quarter note F2, and a quarter note E2. This is followed by a quarter note D2, a dotted quarter note C2, and an eighth note B-flat1. The next measures contain a quarter note A1, a quarter note G1, a quarter note F1, and a quarter note E1. The system ends with a dotted half note D1. The second system continues the melody in the treble staff with a quarter note D4, a quarter note C4, a quarter note B-flat3, and a quarter note A3. It then features a sixteenth-note triplet of G3, F3, and E3, followed by a quarter note D3 and a half note C3. The bass staff continues with a dotted half note D1, a quarter note C1, a quarter note B-flat1, and a quarter note A1. The system concludes with a quarter note G1 and a half note F1. The number '50' is printed at the end of the second system.

