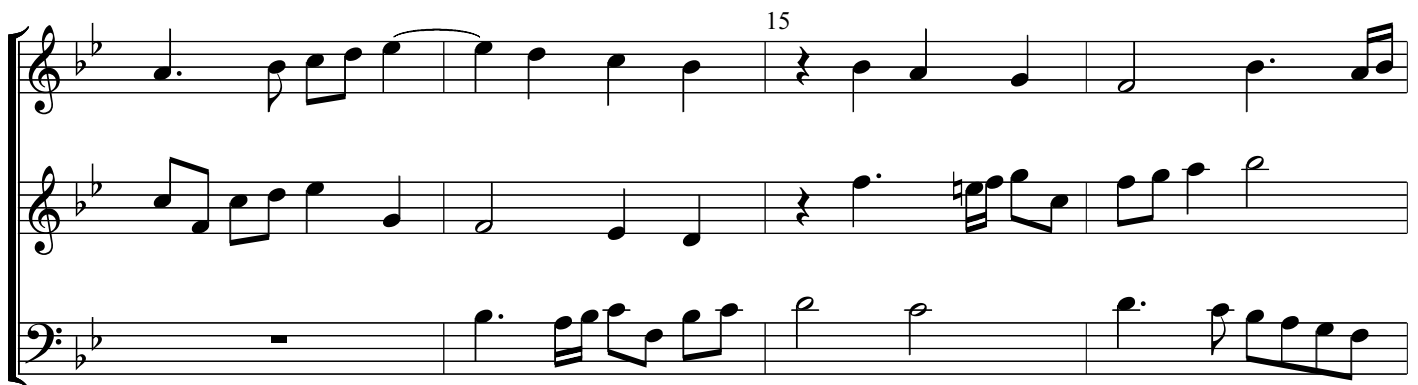


Fantasia No. 21

John Jenkins
VdGS# 19



20



35

This system contains measures 35 through 38. The music is in 3/4 time with a key signature of two flats (B-flat and E-flat). The melody in the upper voice begins with a quarter note B-flat, followed by eighth notes A-flat, G, and F, then a quarter note E-flat. The bass line starts with a quarter note B-flat, followed by eighth notes A-flat, G, and F, then a quarter note E-flat. The system concludes with a whole note B-flat in the upper voice and a whole note E-flat in the bass.

40

This system contains measures 39 through 43. The melody continues with a quarter note D, followed by eighth notes C and B-flat, then a quarter note A-flat. The bass line continues with a quarter note D, followed by eighth notes C and B-flat, then a quarter note A-flat. The system concludes with a whole note B-flat in the upper voice and a whole note E-flat in the bass.

45

This system contains measures 44 through 48. The melody begins with a quarter note B-flat, followed by eighth notes A-flat, G, and F, then a quarter note E-flat. The bass line starts with a quarter note B-flat, followed by eighth notes A-flat, G, and F, then a quarter note E-flat. The system concludes with a whole note B-flat in the upper voice and a whole note E-flat in the bass.

50

This system contains measures 49 through 53. The melody begins with a quarter note B-flat, followed by eighth notes A-flat, G, and F, then a quarter note E-flat. The bass line starts with a quarter note B-flat, followed by eighth notes A-flat, G, and F, then a quarter note E-flat. The system concludes with a whole note B-flat in the upper voice and a whole note E-flat in the bass.

55

This system contains measures 55 through 59. The top staff is in treble clef with a key signature of two flats and a sharp. It features a melodic line with eighth and sixteenth notes. The middle staff is also in treble clef with the same key signature, providing harmonic support. The bottom staff is in bass clef with the same key signature, mostly containing rests. A repeat sign is present at the end of measure 58.

60

This system contains measures 60 through 64. The top staff continues the melodic line. The middle staff has a more active role with eighth and sixteenth notes. The bottom staff, in bass clef, features a prominent eighth-note pattern. A slur is placed over measures 63 and 64 in the middle staff.

65

This system contains measures 65 through 69. The top staff shows a melodic phrase with a slur over measures 67 and 68. The middle staff continues with a melodic line. The bottom staff provides a steady eighth-note accompaniment.

This system contains measures 70 through 74. The top staff features a melodic line with a slur over measures 72 and 73. The middle staff has a melodic line with a slur over measures 72 and 73. The bottom staff continues with an eighth-note accompaniment.

70



This system contains measures 70 through 74. It features three staves: a treble staff with a melodic line of eighth and sixteenth notes, a middle treble staff with a similar melodic line, and a bass staff with a more active line including eighth and sixteenth notes. The key signature has two flats (B-flat and E-flat).

75



This system contains measures 75 through 79. The melodic lines in the treble staves continue with eighth and sixteenth notes, while the bass staff provides a steady accompaniment. Measure 79 ends with a double bar line.

80



This system contains measures 80 through 84. The music continues with a mix of eighth and sixteenth notes across all three staves. Measure 84 ends with a double bar line.

85



This system contains measures 85 through 89. The melodic lines become more active, with many sixteenth notes. The bass staff has a more prominent role with longer note values. Measure 89 ends with a double bar line.