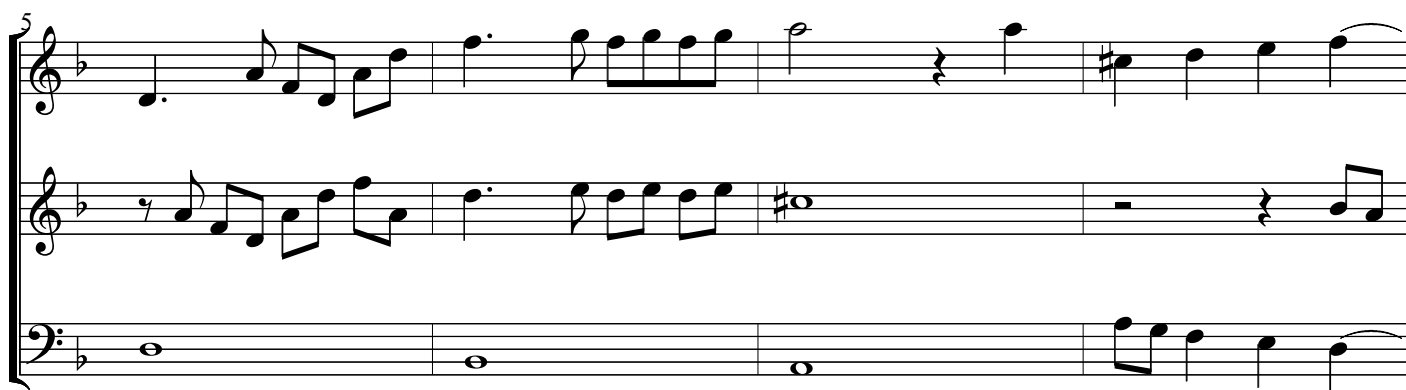


Newberry Ayres


26. Aire

John Jenkins

VdGS# 26

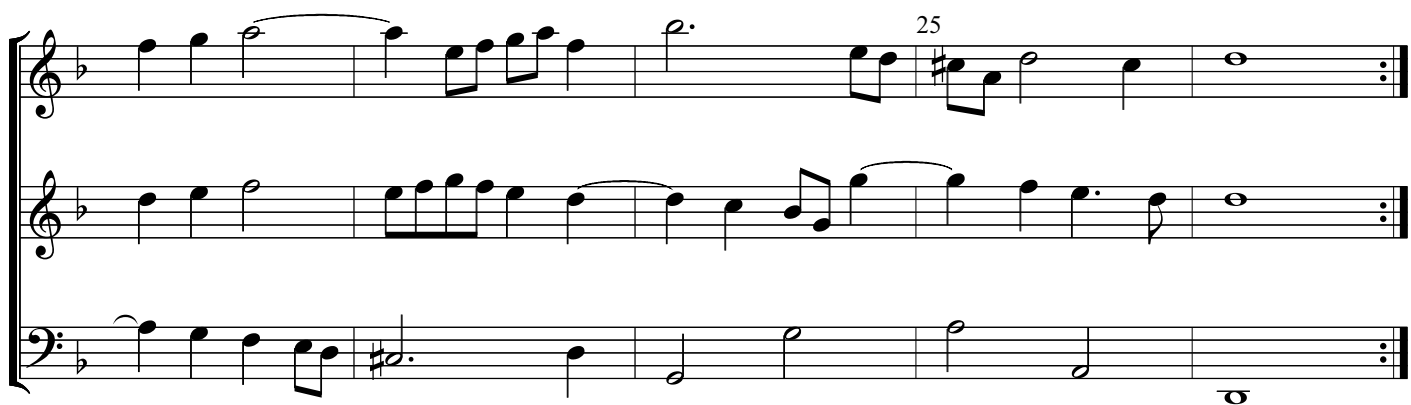


20



This system contains measures 18, 19, and 20. The key signature has one flat (B-flat). Measure 18 features a treble staff with eighth-note pairs (F4-G4, A4-Bb4) and a half note (C5), and a bass staff with a half note (F3) and a quarter note (G3). Measure 19 continues with eighth-note pairs (D4-E4, F4-G4) and a half note (A4) in the treble, and a half note (A2) and a quarter note (B2) in the bass. Measure 20 begins with a treble staff containing eighth-note pairs (Bb4-C5, D5-E5) and a half note (F5), and a bass staff with a half note (C3) and a quarter note (D3). The measure number '20' is positioned above the treble staff.

25



This system contains measures 21, 22, 23, 24, and 25. Measure 21 has a treble staff with a half note (F4), an eighth-note pair (G4-A4), and a half note (Bb4), and a bass staff with a half note (F3) and a quarter note (G3). Measure 22 features a treble staff with eighth-note pairs (C5-D5, E5-F5) and a half note (G5), and a bass staff with a half note (A2) and a quarter note (B2). Measure 23 has a treble staff with a half note (A4), an eighth-note pair (Bb4-C5), and a half note (D5), and a bass staff with a half note (C3) and a quarter note (D3). Measure 24 contains a treble staff with eighth-note pairs (E5-F5, G5-A5) and a half note (Bb5), and a bass staff with a half note (E2) and a quarter note (F2). Measure 25 begins with a treble staff containing eighth-note pairs (C6-D6, E6-F6) and a half note (G6), and a bass staff with a half note (G2) and a quarter note (A2). The measure number '25' is positioned above the treble staff. The system concludes with double bar lines and repeat dots in all three staves.