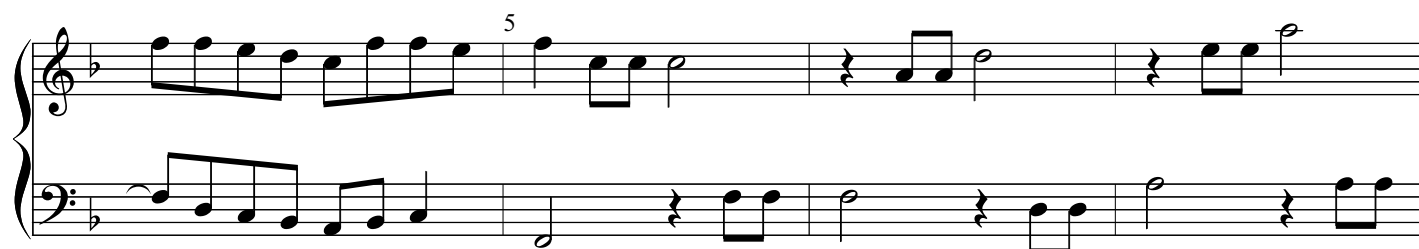


Ayres from OC1005
51. Aire

John Jenkins
VdGS# 51



20

Measures 20-24 of a musical score in B-flat major. Measure 20: Treble clef has a dotted half note B-flat; Bass clef has a dotted half note B-flat. Measure 21: Treble clef has eighth notes C, D, E, F, G, A, B, A, G, F, E, D, C; Bass clef has eighth notes C, D, E, F, G, A, B, A, G, F, E, D, C. Measure 22: Treble clef has eighth notes C, D, E, F, G, A, B, A, G, F, E, D, C; Bass clef has eighth notes C, D, E, F, G, A, B, A, G, F, E, D, C. Measure 23: Treble clef has a half note B-flat tied to the previous measure; Bass clef has a half note B-flat. Measure 24: Treble clef has a whole note B-flat; Bass clef has a whole note B-flat.

25

Measures 25-28 of a musical score in B-flat major. Measure 25: Treble clef has a whole note B-flat; Bass clef has a whole note B-flat. Measure 26: Treble clef has eighth notes C, D, E, F, G, A, B, A, G, F, E, D, C; Bass clef has eighth notes C, D, E, F, G, A, B, A, G, F, E, D, C. Measure 27: Treble clef has eighth notes C, D, E, F, G, A, B, A, G, F, E, D, C; Bass clef has eighth notes C, D, E, F, G, A, B, A, G, F, E, D, C. Measure 28: Treble clef has a whole note B-flat; Bass clef has a whole note B-flat. The piece ends with a double bar line.