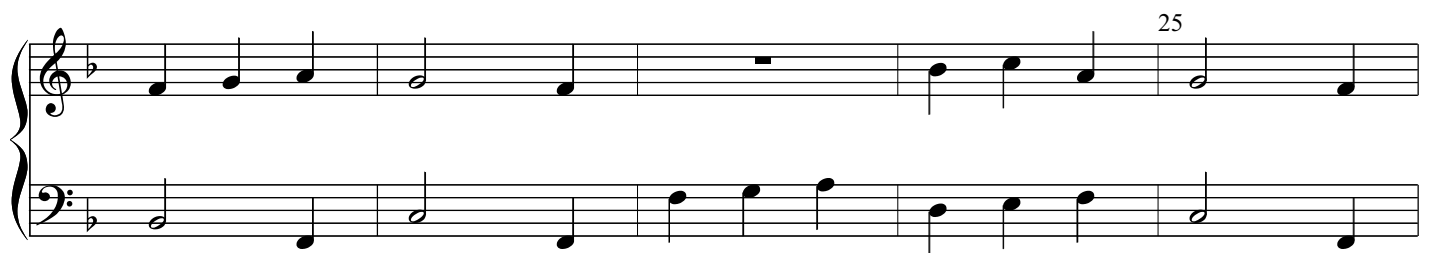
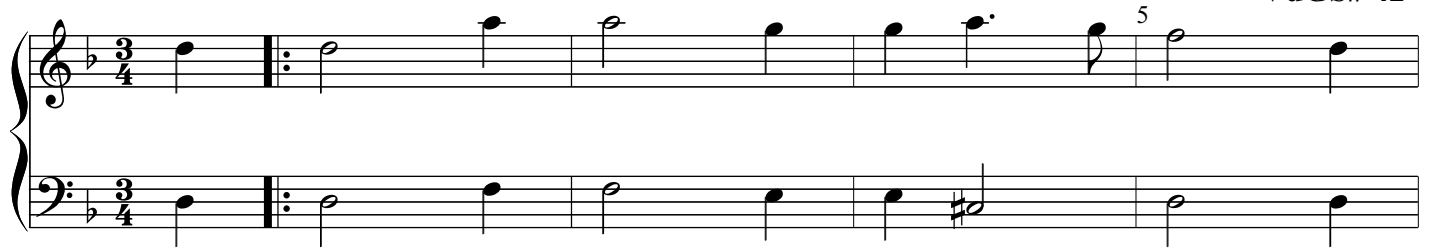


Ayres from OC1005
42. Saraband

John Jenkins
VdGS# 42



30

Measures 30-34 of a musical score in B-flat major. The treble staff begins with a whole rest in measure 30, followed by a descending eighth-note scale (G4, F4, E4, D4, C4, B3, A3, G3) in measures 31-34. The bass staff plays a descending eighth-note scale (F3, E3, D3, C3, B2, A2, G2, F2) in measures 30-34. Both staves end with a double bar line and repeat signs.

35

Measures 35-39 of a musical score in B-flat major. The treble staff features a half note B3 in measure 35, a quarter rest in measure 36, a quarter note D#4 in measure 37, a half note E4 in measure 38, and a quarter note F#4 in measure 39. The bass staff features a half note F2 in measure 35, a quarter rest in measure 36, a quarter note G2 in measure 37, a half note A2 in measure 38, and a quarter note B2 in measure 39. Both staves end with a double bar line and repeat signs.

40

Measures 40-44 of a musical score in B-flat major. The treble staff features a half note G4 in measure 40, a quarter note A4 in measure 41, a quarter note B4 in measure 42, a quarter note C5 in measure 43, and a quarter note D5 in measure 44. The bass staff features a half note F2 in measure 40, a quarter note G2 in measure 41, a quarter note A2 in measure 42, a quarter note B2 in measure 43, and a quarter note C3 in measure 44. Both staves end with a double bar line and repeat signs.

45

Measures 45-49 of a musical score in B-flat major. The treble staff features a half note E4 in measure 45, a quarter note F4 in measure 46, a quarter note G4 in measure 47, a quarter note A4 in measure 48, and a quarter note B4 in measure 49. The bass staff features a half note F2 in measure 45, a quarter note G2 in measure 46, a quarter note A2 in measure 47, a quarter note B2 in measure 48, and a quarter note C3 in measure 49. Both staves end with a double bar line and repeat signs.

Measures 50-54 of a musical score in B-flat major. The treble staff features a half note G4 in measure 50, a quarter note A4 in measure 51, a quarter note B4 in measure 52, a quarter note C5 in measure 53, and a quarter note D5 in measure 54. The bass staff features a half note F2 in measure 50, a quarter note G2 in measure 51, a quarter note A2 in measure 52, a quarter note B2 in measure 53, and a quarter note C3 in measure 54. Both staves end with a double bar line and repeat signs.