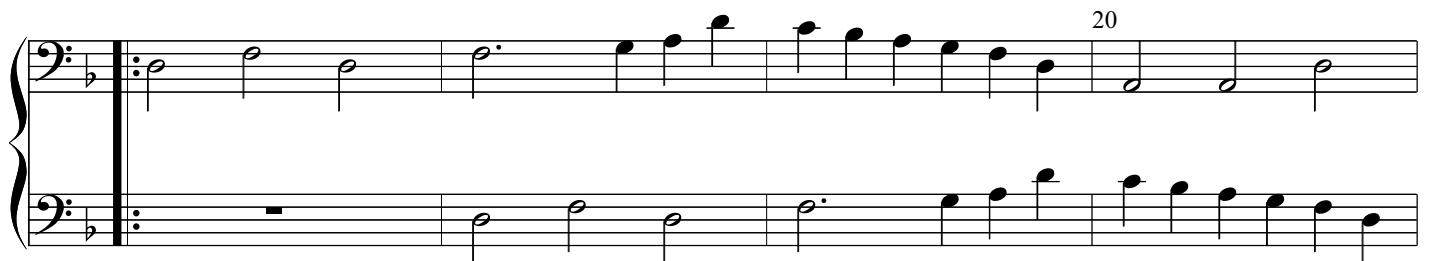
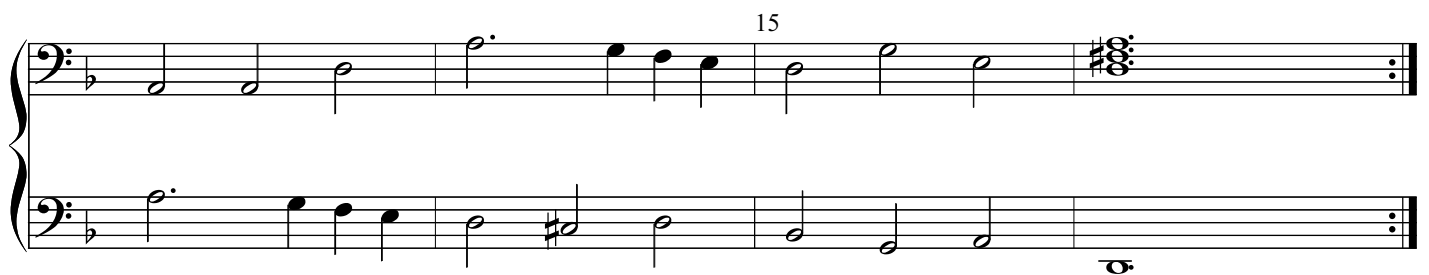


Duet No. 16
Galliard

Anon.
VdGS# 467



A musical score for the song 'The Rose Tree'. It features two staves, both in bass clef, with a key signature of one flat (B-flat). The music is written in a simple, folk-like style. The first staff begins with a half note G2, followed by quarter notes A2, Bb2, and A2, then a half note G#2, and finally quarter notes F2, E2, and D2. The second staff begins with quarter notes G2, F2, and E2, followed by a half note D2, then quarter notes C2, Bb1, and A1, then a half note G1, and finally quarter notes F1, E1, and D1. The piece concludes with a final whole note D1.

[illegible]

30

The musical score for 'The Rose Tree' is presented in two systems. The first system consists of a single staff with a treble clef and a key signature of one flat (B-flat). The melody begins with a quarter rest, followed by a sequence of eighth and quarter notes: G4, A4, B-flat4, A4, G4, F4, E4, D4, C4. The piece concludes with a double bar line and repeat dots. The second system also consists of a single staff with a treble clef and a key signature of one flat. The melody begins with a quarter rest, followed by a sequence of eighth and quarter notes: G4, A4, B-flat4, A4, G4, F4, E4, D4, C4. The piece concludes with a double bar line and repeat dots.