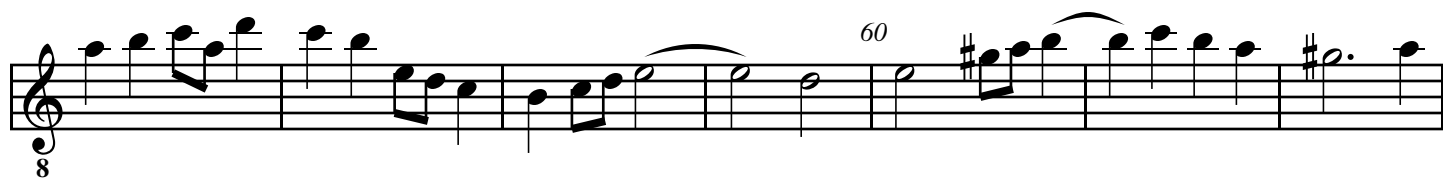
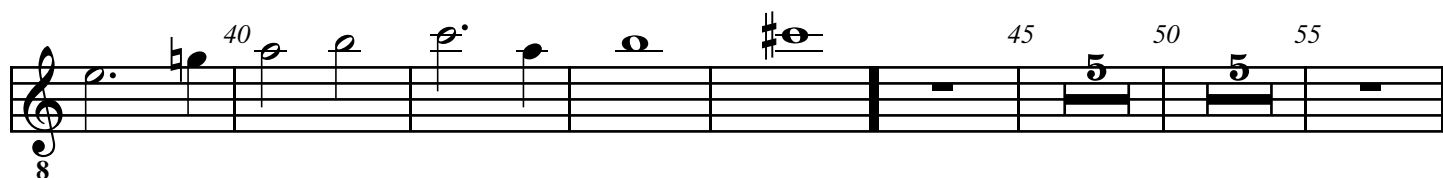
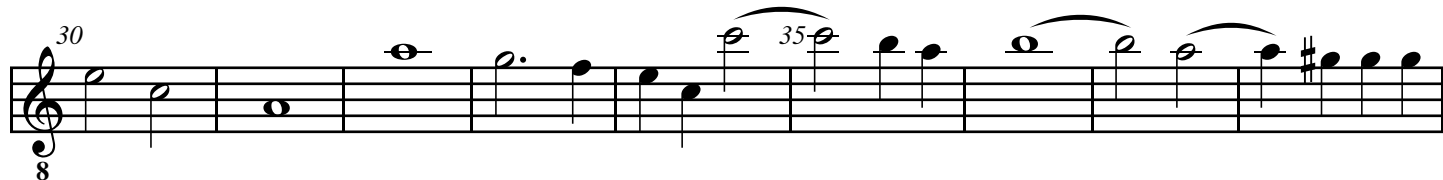
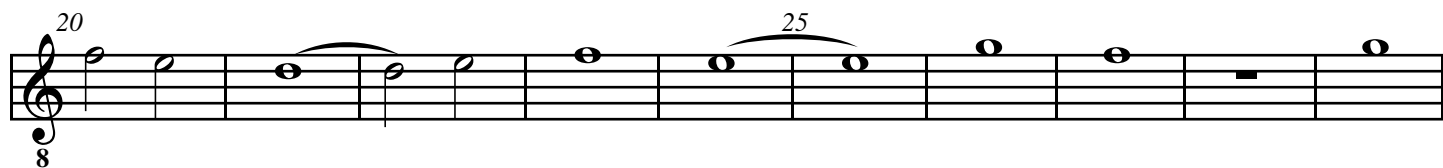
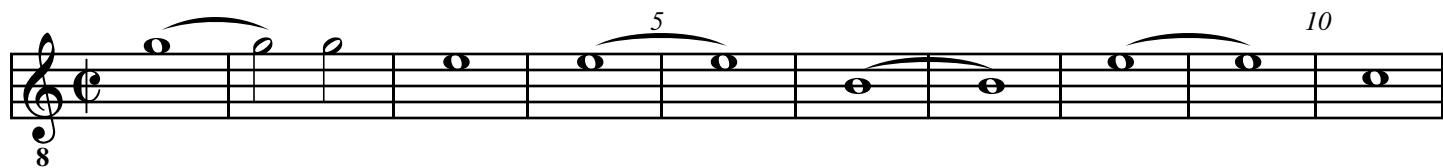


Fantazia à G

Alto
Tr Tr A T B B

Thomas Lupo
VdGS# 5



The first staff of music contains measures 85 to 90. Measure 85 begins with a treble clef and a key signature of one sharp (F#). The melody starts on G4, moves to A4, then B4, and ends on A4. Measure 86 is a whole rest. Measure 87 starts with a quarter rest, followed by a quarter note G4, an eighth note A4, and a quarter note B4. Measure 88 starts with a quarter rest, followed by a quarter note A4, an eighth note G4, and a quarter note F#4. Measure 89 is a whole note G4. Measure 90 is a whole note A4. The staff ends with a double bar line.