

# Fantasia à 5

Amavi

Michael East

VdGS# 8

Bass  
Tr Tr T T B

Musical score for Bass, measures 1-50. The score is written in bass clef with a key signature of one flat (B-flat). The tempo is marked 'Amavi' (Ad libitum). The score consists of 50 measures, grouped into 10 lines of 5 measures each. Measure numbers 5, 10, 15, 20, 25, 30, 35, 40, 45, and 50 are indicated above the staff. The notation includes various note values (quarter, eighth, sixteenth, and dotted notes), rests, and accidentals (sharps and flats). The piece concludes with a double bar line at measure 50.

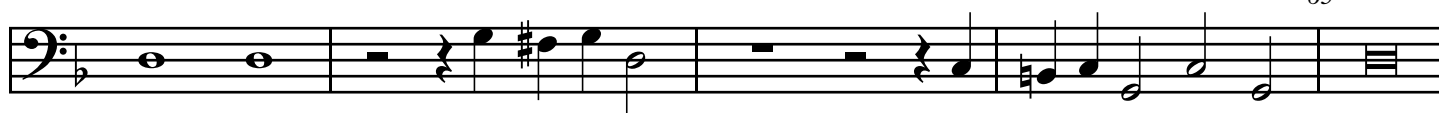


55

60



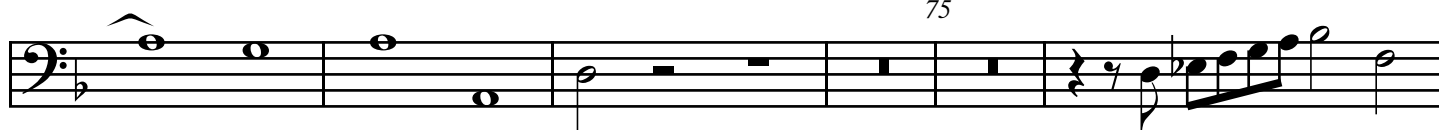
65



70



75



80



85



90

